



Illinois
Department of Commerce
& Economic Opportunity
OFFICE OF BROADBAND
JB Pritzker, Governor



UNIVERSITY OF ILLINOIS SYSTEM

Closing the Digital Divide in Illinois

BEAD Deep-Dive Webinar: Project Area Units & BEAD application overview

January 8, 2025

BEAD Deep Dive Webinar Series:

Context and Goals



Context:

To align with NTIA requirements, BEAD-funded Connect Illinois Round 4 **differs from Connect Illinois Rounds 1-3**

The Illinois Office of Broadband aims to **help all interested applicants become familiar** with these requirements ahead of the subgrantee process



Goals:

Walk through key elements and requirements of the Connect Illinois Round 4 subgrantee selection process:

- Notice of Funding Opportunity (NOFO)
- Application process and tools
- Application templates
- Other tips and tricks

Clarify specific components of the BEAD and Connect Illinois Round 4 program requirements ahead of the subgrantee process

Topics for Discussion Today

1

Recap of BEAD and progress to date

2

Overview of BEAD-funded Connect Illinois Round 4 Project Area Units

3

Overview of BEAD-funded Connect Illinois Rd4 application

1

Recap of BEAD and progress to date

BEAD is a \$42B federal grant program that aims to bring high-speed internet to all Americans

\$42.45 billion

Funds provided for BEAD

The Broadband Equity, Access, and Deployment (BEAD) Program is a federal grant program that aims to get all Americans online by funding partnerships between states or territories, communities, and stakeholders to build infrastructure where high-speed internet is currently unavailable

Program highlights

Eligible entities

- All 50 States, District of Columbia, and Puerto Rico
- Other Territories: U.S. Virgin Islands, Guam, American Samoa, and the Commonwealth of the Northern Mariana Islands

Example eligible uses of funds

- Planning for the deployment of high-speed Internet, including conducting research, collecting data, outreach, and training
- Deploying or upgrading Internet in un/underserved areas
- Improving service to community anchor institutions
- Installing Internet and Wi-Fi in multi-unit residential buildings
- Workforce development, including Registered Apprenticeships and pre-apprenticeships, community college and/or vocational training for broadband-related occupations to support deployment, maintenance, and upgrades

What are the goals of BEAD?



The BEAD Program awarded Illinois \$1.04 billion to connect all unserved and underserved locations to broadband over the next 5 years



Ensure universal coverage across all un/underserved locations in the state, maximizing deployment of end-to-end fiber, and only using non-fiber where fiber costs are extremely high¹



Prioritize projects providing broadband access to unserved and underserved locations and community anchor institutions, Wi-Fi equipment for Multi-Dwelling Units (MDUs) then other digital equity and inclusion priorities²



Run subgrantee selection process within one year of approval of the Initial Proposal, and complete implementation within four years of receipt of funds³



Focus on improving broadband affordability through a low-cost broadband service option, and a middle-class affordability plan⁴

1. Page 14 of BEAD NOFO, on the definition of Priority Broadband Project
2. Page 33 of BEAD NOFO, on the allocation of grant funds
3. Page 65 of BEAD NOFO, on deployment deadlines and benchmarks
4. Page 42-46 of BEAD NOFO, on inclusion of affordability in the BEAD scoring criteria

Source: [BEAD NOFO](#)

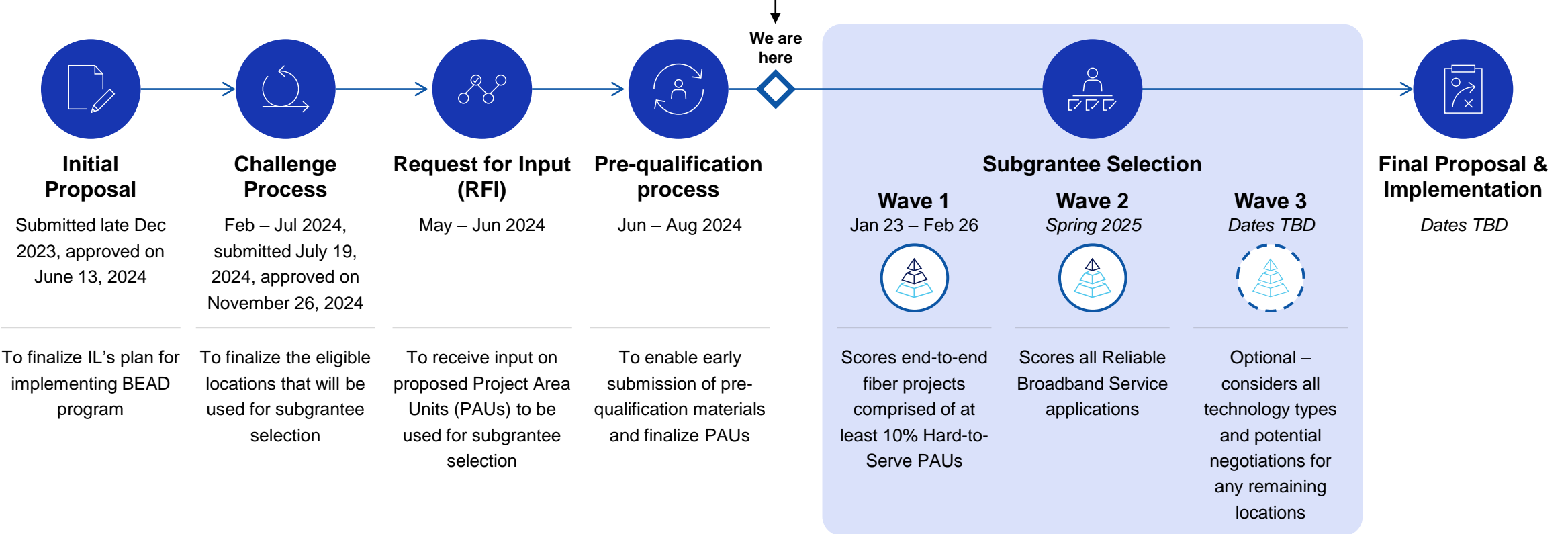
Overview of the BEAD-Funded Connect Illinois Round 4 timeline

PRELIMINARY TIMELINE - SUBJECT TO CHANGE

INFORMATION PROVIDED ON AN INFORMATIONAL BASIS AND DOES NOT SUPERCEDE ORIGINAL DOCUMENTS

Key Updates

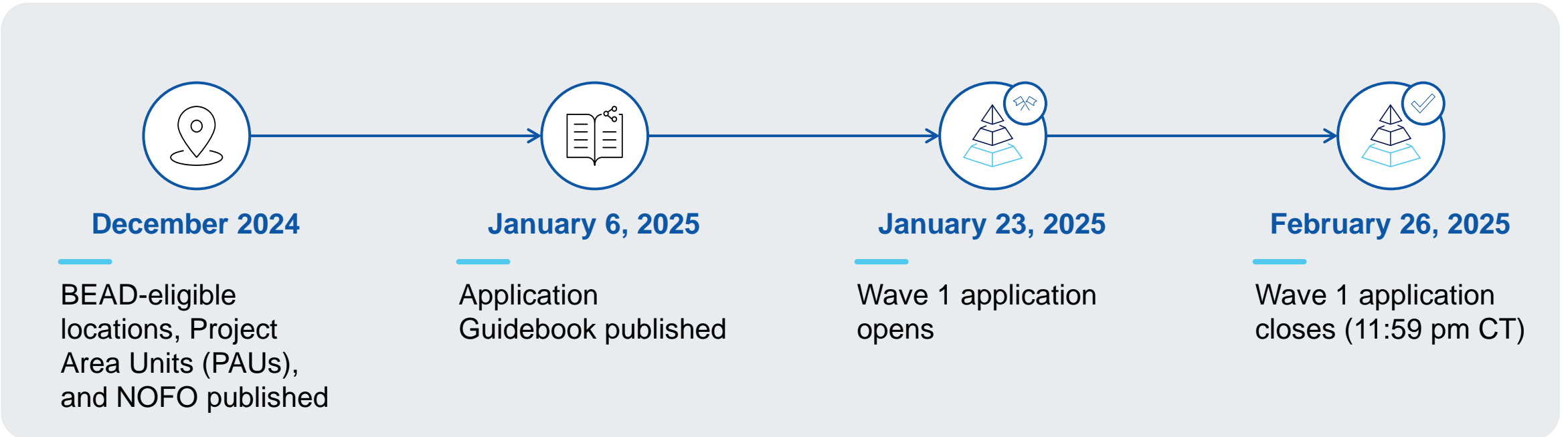
- Pre-Qualification Participation Notice Letters sent to all participants
- Final BEAD eligibility data approved by NTIA and Project Area Units (PAUs) posted
- NOFO and Application Guidebook posted



Key dates for BEAD-Funded Connect Illinois Round 4

PRELIMINARY TIMELINE - SUBJECT TO CHANGE

INFORMATION PROVIDED ON AN INFORMATIONAL BASIS AND DOES NOT SUPERCEDE ORIGINAL DOCUMENTS



Technical Assistance:

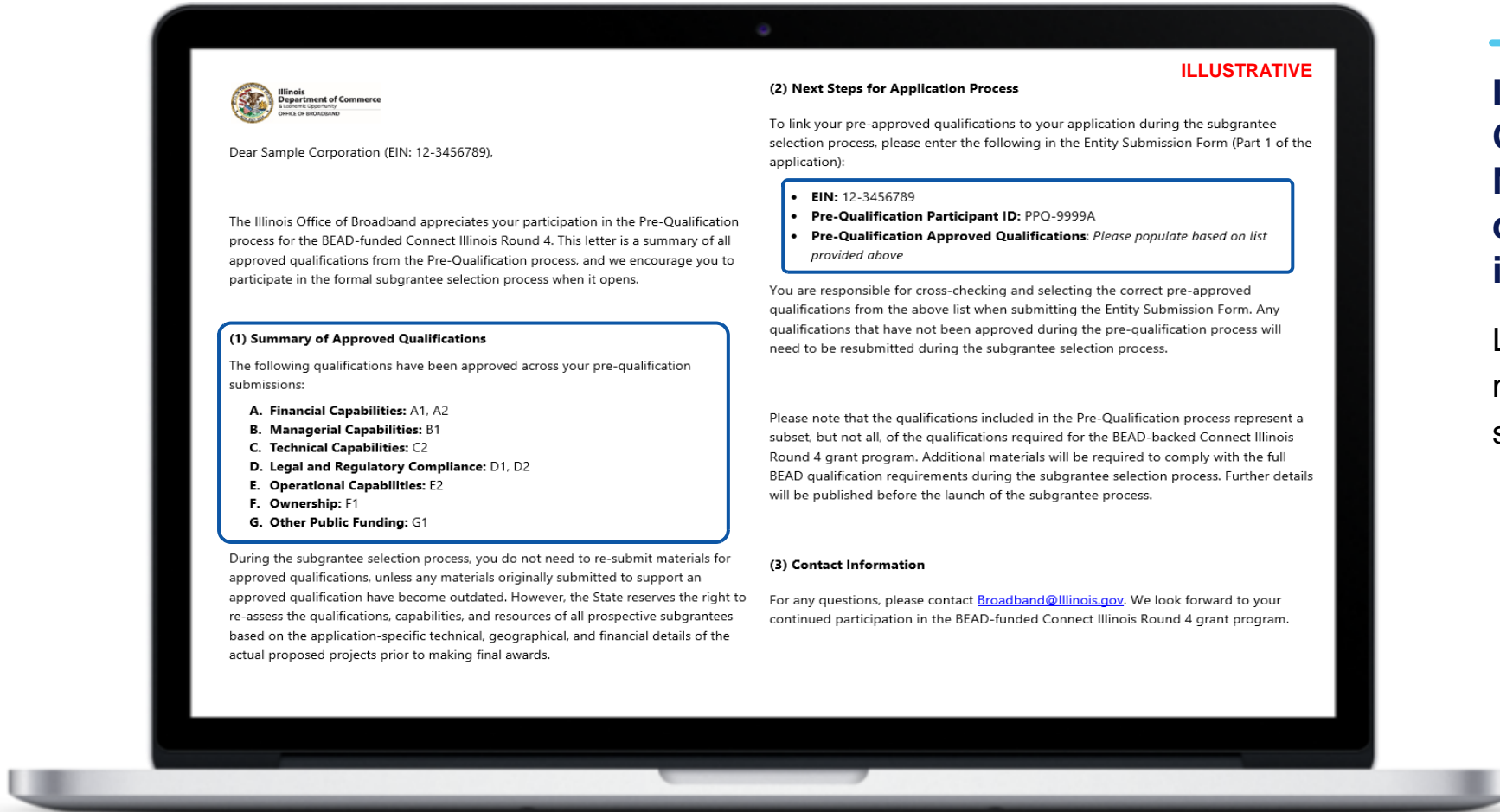
- Application materials walk-throughs during webinars throughout January
- Recurring office hours and technical assistance will be offered during application window

Sample Pre-Qualification Participation Notice Letter

ILLUSTRATIVE

INFORMATION PROVIDED ON AN INFORMATIONAL BASIS AND DOES NOT SUPERCEDE ORIGINAL DOCUMENTS

Key information

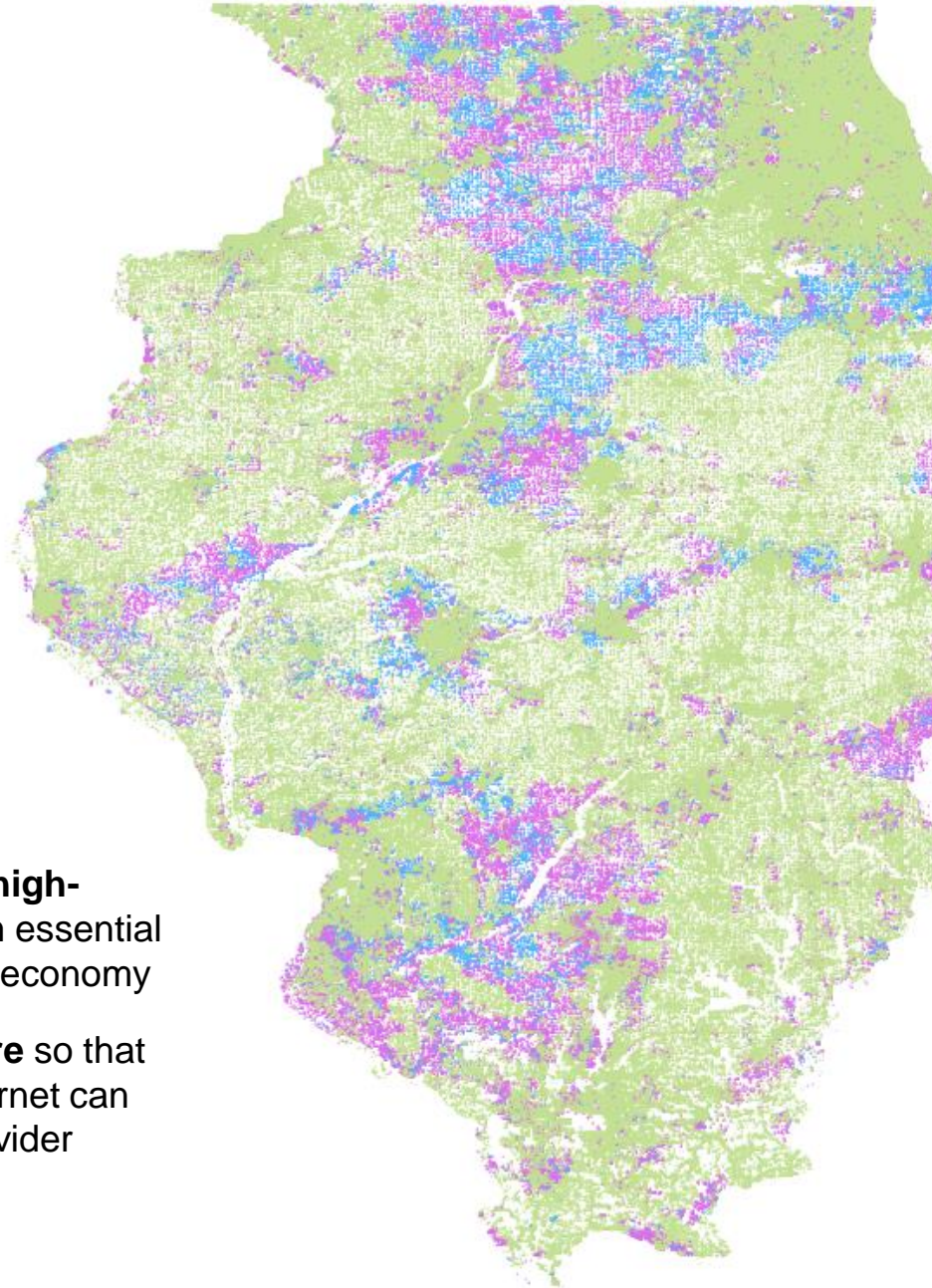


IOB sent a Pre-Qualification Participation Notice Letter to all pre-qualification participants in Fall 2024

Letter summarizes qualifying materials for reference during sub-grantee selection process.

Note: RDOF awardees are required to resubmit materials for G4 even if pre-qualified (see Final Determination email for details)

175,293 locations are eligible to be connected through BEAD



Today, many Illinoisans cannot access high-speed internet service, barring them from essential online services and the 21st century digital economy

BEAD funds will help build infrastructure so that every Illinoisan who wants high-speed internet can subscribe to internet service through a provider

Broadband service availability in Illinois, per BEAD-eligibility data

~4.2M

Total Broadband Serviceable Locations (BSLs)

~107K (~3%)

Unserved BSLs

(locations with <25/3Mbps speed)

~65K (~1%)

Underserved BSLs

(locations with ≥25/3Mbps and <100/20Mbps speed)

~4.0M (~96%)

Served BSLs

(locations with ≥100/20Mbps speed)

Plus **3,356** eligible community anchor institutions (CAIs)

~172K
BEAD-eligible
BSLs

BEAD eligibility statistics by county: Top 10 Illinois counties with highest count of eligible locations

County	BEAD-eligible Broadband Serviceable Locations (BSLs)	BEAD-eligible CAIs	Total eligible BSLs & CAIs	Share of total eligible BSLs & CAIs
Lee	8,300	25	8,325	4.75%
Ogle	6,335	25	6,360	3.63%
Lasalle	5,590	25	5,615	3.20%
St. Clair	5,381	51	5,432	3.10%
McHenry	5,031	82	5,113	2.92%
Tazewell	4,745	19	4,764	2.72%
Stephenson	4,350	17	4,367	2.49%
Marion	4,205	10	4,215	2.40%
Winnebago	4,012	30	4,042	2.31%
Bond	3,969	25	3,994	2.28%

Opportunity to report new service to BEAD-eligible locations

The Illinois Office of Broadband (IOB) will accept evidence from internet service providers who seek to demonstrate that locations classified as unserved or underserved are already served by Reliable Broadband Service through deployments since the Challenge Process.

- Evidence will be accepted **under two categories**:
 - Location already served by Enforceable Commitment
 - Location is already served by nonsubsidized service (privately funded network)
- Submissions will be accepted through a **Service Updates Submission Form**
- IOB to publish acceptable evidence guidelines and instructions by end of week
- Initial acceptance period**: January 10 – February 6, 2025
- Based on evidence received, IOB may feel confident that the location is served and thus **exclude certain BEAD-eligible locations from BEAD funding**

Note: The IOB will consider all evidence submitted but is not required to make any modifications.

Sample submission template:

	A	B	C	D	E	F
1	Location ID	Reason Code	Technology Code	Max. Upload Speed (in Mbps)	Max. Download Speed (in Mbps)	[If Reason Code 4] Grant Program Name
2						
3						
4						
5						
6						

Process to participate, and template fields to complete

- Populate CSV template, including:
 - Location ID (of served location)
 - Reason Code (4 or 5)
 - Technology Code
 - Max. Upload Speed (in Mbps)
 - Max. Download Speed (in Mbps)
 - [If Reason Code 4] Grant Program Name
- Gather applicable evidence and name each file with the respective Location ID
- Complete the Serviceability Updates Submission Form

2

Overview of Project Area Units (PAUs)

Recap: The subgrantee selection process consists of up to three waves, starting with a focus on hard-to-serve Project Area Units (PAUs)

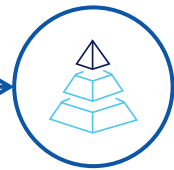


Wave 1

Jan 23 – Feb 26

Focus: hard-to-serve areas

- **End-to-end fiber projects are prioritized** (as required by BEAD)
- **Only the applications including at least 10% hard-to serve areas** will be processed
- **Where there are conflicting applications, the higher scoring application will prevail**

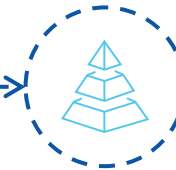


Wave 2

Spring 2025

Focus: all remaining locations

- All **Reliable Broadband Service projects** accepted and scored
- **The State will determine the cost threshold (EHCPLT)**, above which the State has the option to select non-fiber over fiber projects



Optional Wave 3

Timeline to be determined

Focus: all remaining locations

- **For remaining areas**, applicants will have a final opportunity to submit a proposal
- The State will negotiate coverage for remaining unbid locations, and may consider Alternative Technology

What are PAUs?

Project Area Units (PAUs) are clusters of eligible locations no more than five miles apart

PAUs function as the “building blocks” of applications - applicants can apply to serve one or more PAUs, and PAUs cannot be separated

Detailed definitions follow

Note: Timeline is tentative based on currently available information and may change

Source: Connect Illinois Initial Proposal Volume II

Before we discuss further, let's define a few concepts and terms (1/3)

Project Area Unit (PAU)

A collection of un/underserved Broadband Serviceable Locations (BSLs) and Community Anchor Institutions (CAIs) eligible for an application



PAUs do not overlap and collectively contain all un/underserved locations and eligible CAIs in the State

If awarded a PAU, a subgrantee must deploy to all included eligible locations

Broadband Serviceable Location (BSL)

A business or residential location at which fixed broadband access is, or can be, installed, where:

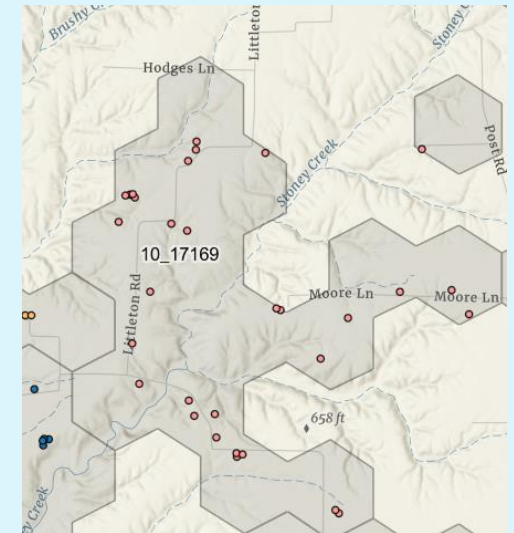
- **Unserved:** Has access to broadband service with speeds of <25/3Mbps
- **Underserved:** $\geq 25/3$ and <100/20Mbps
- **Served:** $\geq 100/20$ Mbps

Community Anchor Institution (CAI)

An entity that facilitates wider use of broadband service by vulnerable populations (e.g., schools, libraries, senior centers)¹

CAIs without access to 1Gbps symmetrical broadband service are eligible for BEAD funding

Illustration of a PAU, where each point shown is an eligible location



1. Details on Illinois's definition of CAIs can be found in Illinois's BEAD Initial Proposal Volume I

Before we discuss further, let's define a few concepts and terms (2/3)



What it is



What it is not

Project Area

One or more PAUs that an applicant proposes to serve in an application
Applicants may pick any number of PAUs, but cannot split up a PAU

A guarantee that an applicant will receive funding for any or all of their proposed Project Area

Must-Include PAU

A PAU identified by an applicant as necessary for an application to be viable
During deconfliction, if a must-include PAU conflicts with the project area of a provisionally awarded project, the applicant may withdraw their application

A requirement that an applicant must withdraw their application when a must-include PAU has been deconflicted

Hard-to-Serve PAU

A PAU that the State has designated as hard to serve, meeting at least one of the following criteria:

- Has a high share of unserved BSLs
- Has a high share of BSLs with little provider interest in prior grant rounds
- Is in a Persistent Poverty County (*20% or more of population living in poverty over the past 30 years, per Census*)
- Is in a High-Cost Area (HCA)

Hard-to-serve PAUs are prioritized for Wave 1 provisional awards (wave 1 applications are required to include 10% or more Hard-to-Serve PAUs)

A comprehensive list of all Project Area Units that may be difficult for any given provider to serve

Before we discuss further, let's define a few concepts and terms (3/3)



What it is



What it is not

Reference Cost

An **estimate of the potential subsidy needed** to deploy fiber internet to a given PAU. The reference cost will be used in BEAD-funded Connect Illinois Round 4 to **determine the points awarded to an applicant** under the minimal BEAD outlay scoring criteria.

The reference cost for each PAU is based on CostQuest Associate's Net Present Value estimate, assuming greenfield fiber buildout. The reference cost of a project area is calculated as the sum of the reference cost of the PAUs.

Key PAU reference cost statistics:

- Minimum reference cost for a PAU: \$1,000 (some PAUs with only 1 location)
- Maximum reference cost for a PAU: \$2,986,000

An estimate of the total cost required to deploy fiber internet to a given PAU (i.e., the subsidy also assumes a variable provider match based on the estimated business case)

A commitment by the State of Illinois to award funding equal to the reference cost (i.e., the award amount could be higher or lower to achieve the goals of the BEAD program)

High-Cost Area (HCA)

An area of the state for which NTIA has determined the cost of building broadband service is above average.

In Illinois, six Census Block Groups qualify as High-Cost Areas.

PAUs in High-Cost Areas will be exempt from the minimum 25% match requirement.

Inclusive of all areas that may be higher than average for a particular broadband provider to deploy fiber internet

The initial PAUs were refined based on the results of the Challenge Process and input from the Request for Input (RFI)

What changed since the original PAUs?



Challenge Process

Locations were added and removed from the list of BEAD-eligible locations, based on accepted challenger evidence

For example:

- Planned Service challenge → removed location
- Availability challenge → added location

New locations were either added to an existing PAU, or a net new PAU



Illinois Request for Input (RFI)

PAUs refined based on feedback received during the June RFI process, including:

- Challenges with terrain / topography (e.g., waterways) – *majority of updates*
- Challenges with built environment (e.g., highways)
- Specific locations not forming a “logical project area” with other locations in the PAU

Final statistics post-Challenge Process & RFI

PAU-level summary

- Number of PAUs: 7,400
 - Hard-to-serve PAUs: 1,857 (~25%)

Location-level summary

- Total eligible locations: 175,293
 - Number of eligible BSLs: 171,937
 - Number of eligible CAIs: 3,356

Accessing Project Area Units (PAUs) on the Illinois Broadband Map (1/4)

As of December 23, 2024

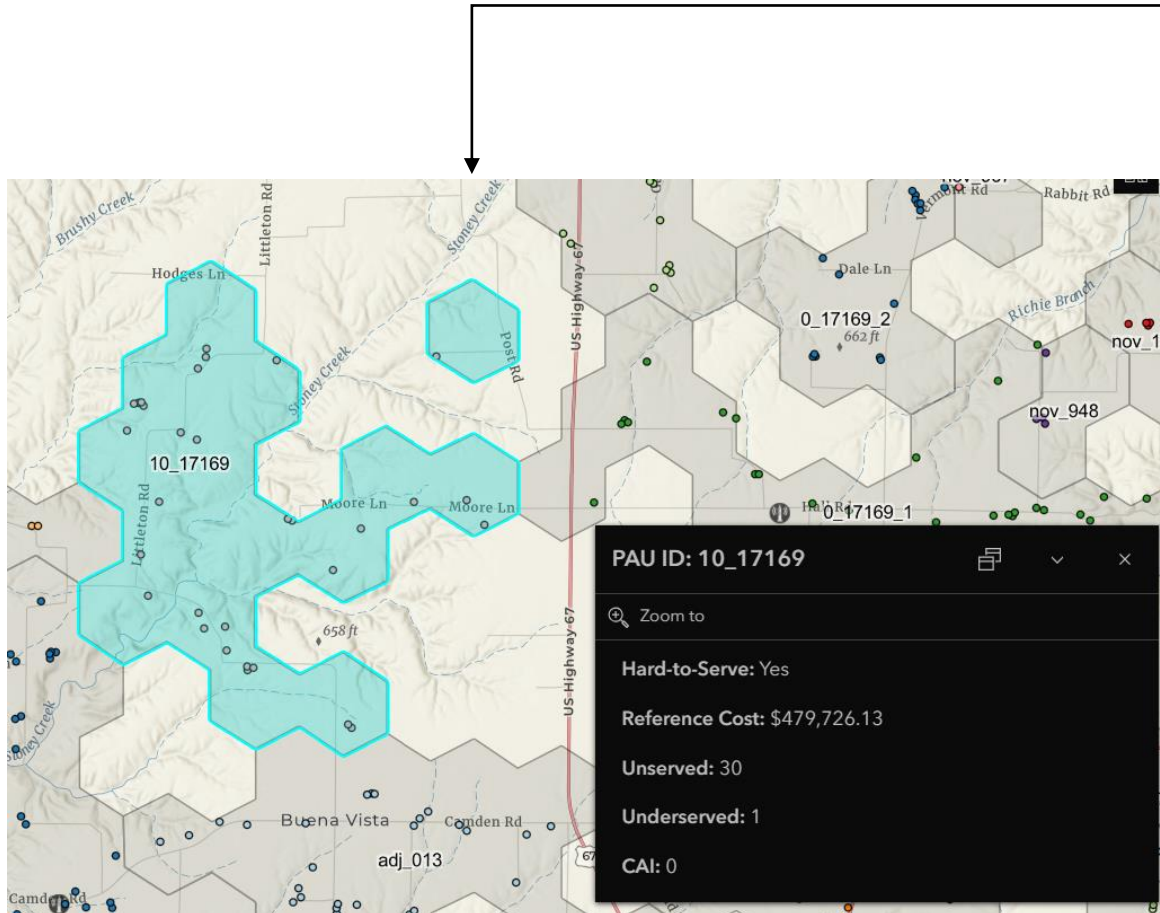
Project Area Units are available to view and download on the Illinois Broadband Map. The purpose of this map layer is to give prospective BEAD applicants an opportunity to plan for their Connect Illinois Round 4 applications.

How to access PAUs:

- Visit the [Illinois Broadband Map](#)
- Navigate to the panel on the right-hand side and ensure “Project Area Units (PAU)” is selected.
- Deselect other layers to view PAUs more clearly

Accessing Project Area Units (PAUs) on the Illinois Broadband Map (2/4)

How to view PAUs and PAU-specific information



Click on the **shaded area within a polygon** to view information about the PAU, including the PAU ID (unique identifier per PAU), whether it is designated as Hard-to-serve, the Reference Cost, and the count and breakdown of eligible locations that comprise the PAU.

Note: PAUs are clusters of locations that share a PAU ID. The polygons surrounding the locations are a visual aid, but it is the *points* within the polygons which comprise the true PAU.

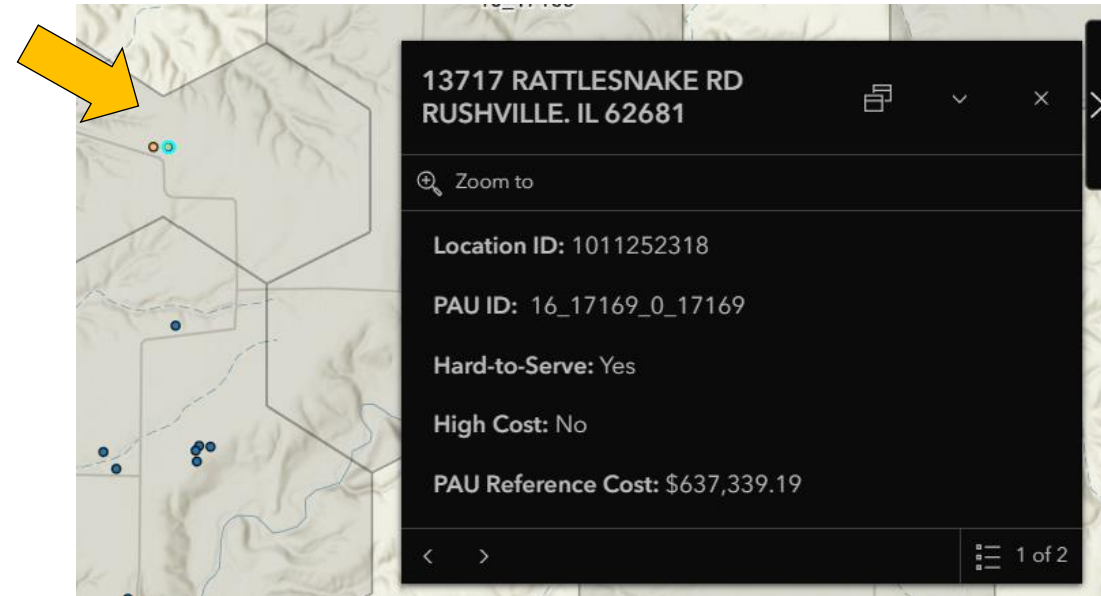
Accessing Project Area Units (PAUs) on the Illinois Broadband Map (3/4)

How to view locations and location-specific information

Click on the “+” or double click on the map to zoom in.
(Zoom in six times to see locations in the PAUs.)



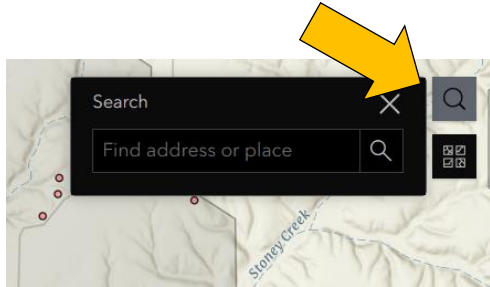
Click on a **point** to view location-specific information, such as the address, Location ID, and classification, as well as PAU-specific information for the PAU to which the location belongs.



Accessing Project Area Units (PAUs) on the Illinois Broadband Map (4/4)

How to complete other key functions

Search:

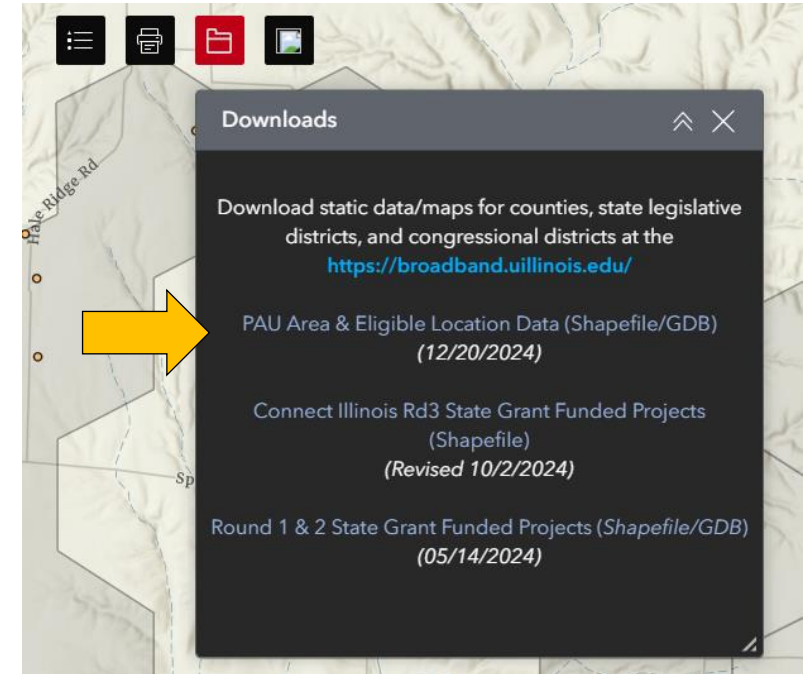


Use the search bar to navigate to a specific address, zip code, county, town, or city.

Download:



To download Shapefiles with PAU data, navigate to the "Downloads" folder on the top left of the screen.



Click on "PAU Area & Eligible Location Data (Shapefile/GDB)" to download the .zip file. This will open in the browser

Click "Download All." This .zip file also contains an Excel file called "Definitions" with information about each term and column name.

PAU Layer on Map: Live Demo

The screenshot displays the Illinois Broadband Map interface. At the top left, the Illinois Department of Commerce & Economic Opportunity logo is shown, along with the text "OFFICE OF BROADBAND" and "JB Pritzker, Governor". The main title "Illinois Broadband Map" is centered at the top, with the subtitle "Published Broadband Updates for May 31, 2024." below it. The map area shows a topographic background with various colored overlays representing different broadband-related data. A search box is visible in the upper right of the map area. On the right side, a legend panel is open, listing several layers with checkboxes. The "PAU Area Unit (PAU)" layer is checked. Other layers include "Boundaries (Click to Expand)", "Community Anchor Institutions", "Access by Speed", "Access by Technology", "Access by Maximum Advertised Speeds", "Density of Providers (Click to Expand)", "State Infrastructure Programs", "Federal Infrastructure Grant Programs", "Socio-Economic Characteristics (Census Data)", and "Internet Access by". The map shows various geographic labels like "Brooklyn", "Wayland", "Erwin", "Rushville", and "Clark Branch".

Illinois Department of Commerce & Economic Opportunity
OFFICE OF BROADBAND
JB Pritzker, Governor

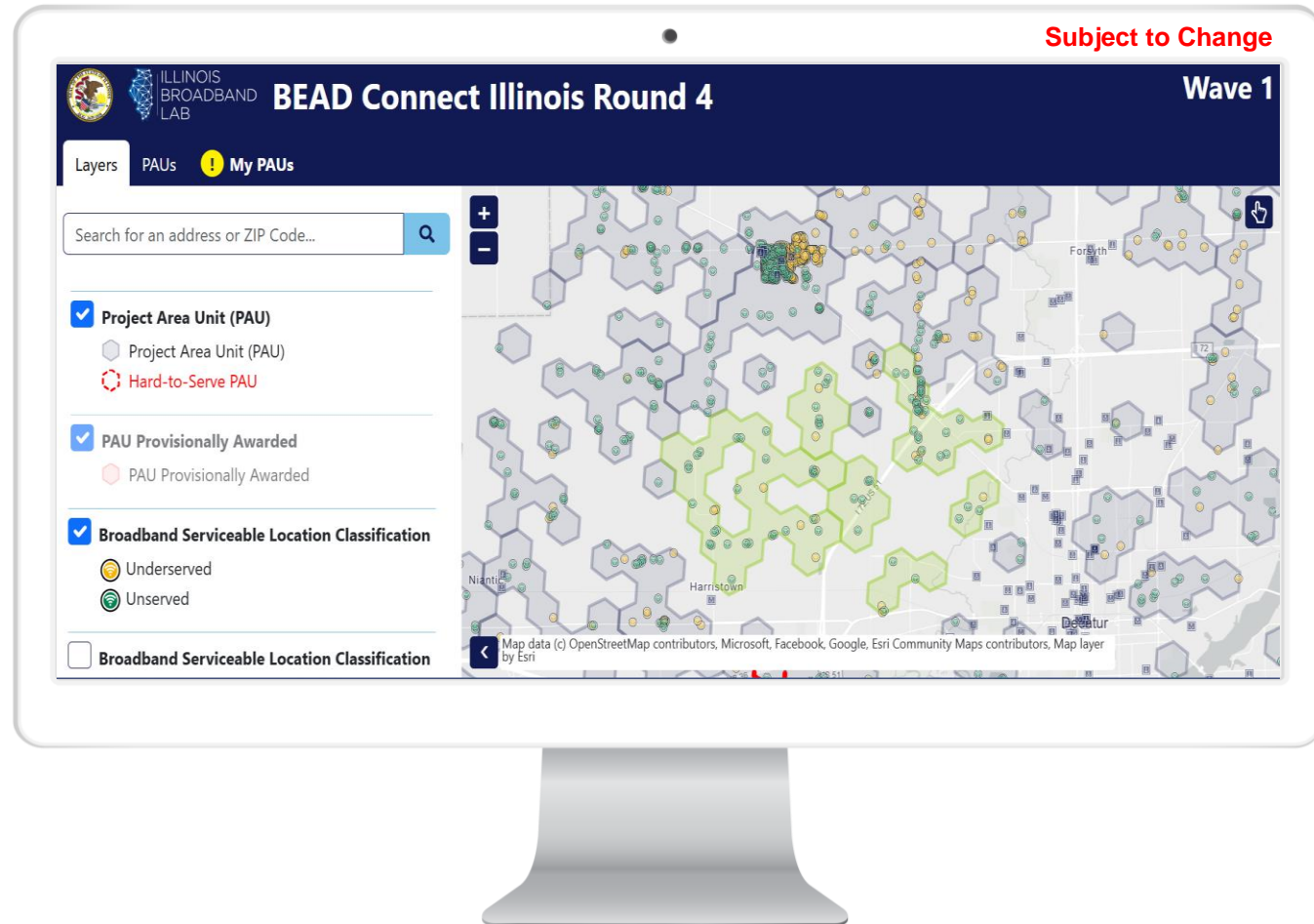
Illinois Broadband Map

Published Broadband Updates for May 31, 2024.

Search
Find address or place

- Boundaries (Click to Expand)
- Community Anchor Institutions
- Access by Speed
- Access by Technology
- Access by Maximum Advertised Speeds
- Density of Providers (Click to Expand)
- PAU Area Unit (PAU)
- State Infrastructure Programs
- Federal Infrastructure Grant Programs
- Socio-Economic Characteristics (Census Data)
- Internet Access by

PAU Selection Tool in BEAD application



Closer to the opening of the application window, the Office of Broadband will publish a dynamic Project Area Selection Tool for prospective applicants to select and download their specific project areas as part of their application

A demo and training on how to use the selection tool will be covered in the January 22 webinar.

3

Overview of BEAD-Funded Connect Illinois Round 4 Application

NEW

Application Guidebook

The BEAD-funded Connect Illinois Round 4 Application Guidebook provides details about the application process, all application questions, templates, and instructions to complete the three required forms [\[Link\]](#)

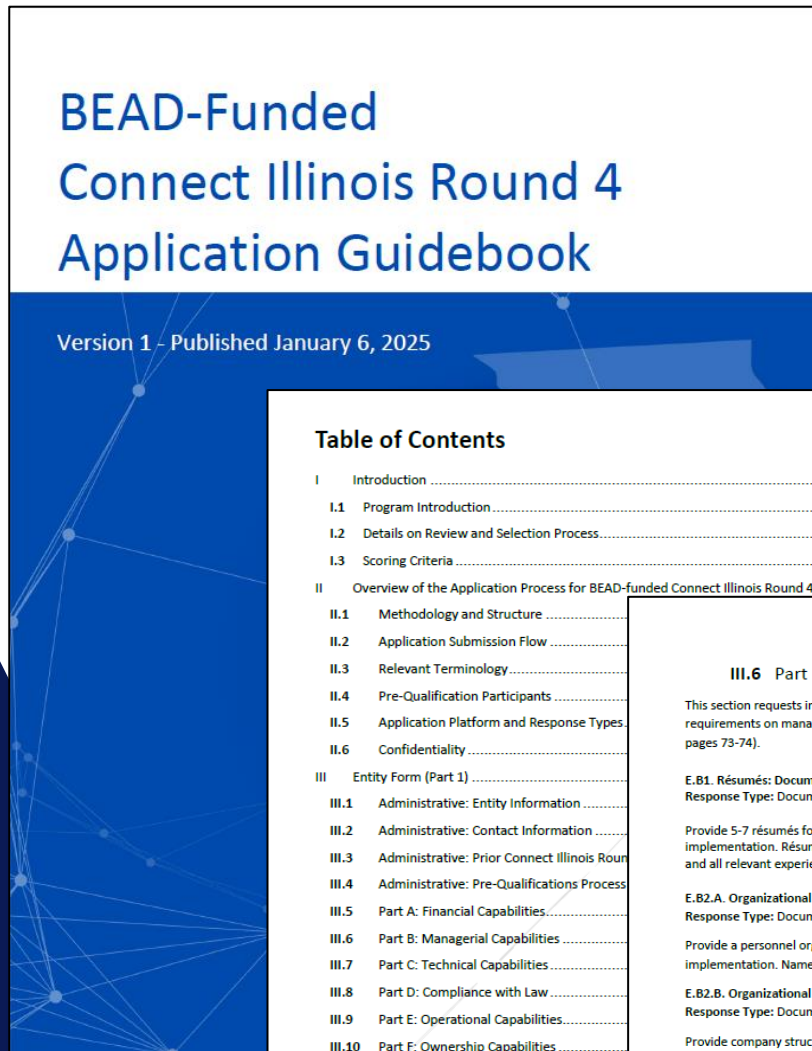


Table of Contents

I	Introduction	4
I.1	Program Introduction	4
I.2	Details on Review and Selection Process	5
I.3	Scoring Criteria	8
II	Overview of the Application Process for BEAD-funded Connect Illinois Round 4	13
II.1	Methodology and Structure	
II.2	Application Submission Flow	
II.3	Relevant Terminology	
II.4	Pre-Qualification Participants	
II.5	Application Platform and Response Types	
II.6	Confidentiality	
III	Entity Form (Part 1)	
III.1	Administrative: Entity Information	
III.2	Administrative: Contact Information	
III.3	Administrative: Prior Connect Illinois Round 4	
III.4	Administrative: Pre-Qualifications Process	
III.5	Part A: Financial Capabilities	
III.6	Part B: Managerial Capabilities	
III.7	Part C: Technical Capabilities	
III.8	Part D: Compliance with Law	
III.9	Part E: Operational Capabilities	
III.10	Part F: Ownership Capabilities	
III.11	Part G: Other Public Funding	
III.12	Part H: Risk Management	
III.13	Part I: Regulatory Information	
III.14	Next Steps after Submission	
IV	Project Form (Part 2)	
IV.1	Administrative: Project and Associated Entities	
IV.2	Administrative: Submission Type	

III.6 Part B: Managerial Capabilities

This section requests information about your entity to demonstrate compliance with BEAD requirements on managerial capabilities for subgrantees deploying network facilities (BEAD NOFO, pages 73-74).

E.B1. Résumés: Documentation
Response Type: Document Upload (Permitted file types: PDF)

Provide 5-7 résumés for essential financial, technical, and managerial personnel who will support project implementation. Résumés should include educational experience, detailed descriptions of work history, and all relevant experience in undertaking projects of similar size and scope.

E.B2.A. Organizational chart(s): Personnel Documentation
Response Type: Document Upload (Permitted file types: PDF, XLSX, DOCX, JPEG, PNG)

Provide a personnel organizational chart that includes all relevant personnel who will support project implementation. Names and titles should be clearly identified for all positions.

E.B2.B. Organizational chart(s): Entity Structure Documentation
Response Type: Document Upload (Permitted file types: PDF, XLSX, DOCX, JPEG, PNG)

Provide company structure organizational chart(s) detailing all parent companies, subsidiaries, and affiliates.

If relevant, prospective subgrantees should also provide a narrative on upcoming organizational changes, including mergers, acquisitions, and organizational policies.

E.B3. Managerial Readiness: Narrative
Response Type: Narrative

Provide a narrative of managerial readiness to manage a broadband services network. This narrative should describe the experience and qualifications of key management for undertaking this project, its experience undertaking projects of similar size and scope, recent and upcoming organizational changes including mergers and acquisitions, and relevant organizational policies.

Notice of Funding Opportunity (NOFO)

Formal grant opportunity posting
[\[Link\]](#)

Agency-specific Content for the Notice of Funding Opportunity Connect Illinois Broadband Program NOFO ID: 3504-2942

For information about grants please visit <https://dceo.illinois.gov/aboutdceo/grantopportunities/granteeresources.html>.

A. Program Description

Notice of Funding Opportunity Intent

The Illinois Department of Commerce and Economic Opportunity (the "State" or "DCEO") is issuing this Notice of Funding Opportunity ("NOFO") to set forth the requirements for the BEAD-Funded Connect Illinois Round 4.

Program Description

BEAD-Funded Connect Illinois Round 4 utilizes federal funds from the U.S. Department of Commerce's National Telecommunications and Information Administration (NTIA) through the Broadband Equity, Access, and Deployment (BEAD) Program, which was authorized by the Infrastructure Investment and Jobs Act of 2021, Division F, Title I, Section 60102, Public Law 117-58, 135 Stat. 429 (November 15, 2021) (Infrastructure Act or Act), also known as the Bipartisan Infrastructure Law.

BEAD-Funded Connect Illinois Round 4 deploys broadband service to unserved and underserved locations. In accordance with the BEAD Program, this program prioritizes projects that provide fiber connectivity directly to the end-user while considering projects that use other technologies to ensure universal coverage.¹

Definitions. The following terms are defined accordingly for the purposes of this NOFO and the BEAD-Funded Connect Illinois Round 4:

"Assistant Secretary" refers to the Assistant Secretary of Commerce for Communications and Information or the individual who holds any successor position.²

"Alternative technology" means any technology that does not qualify as Reliable Broadband Service, including Unlicensed Fixed Wireless (ULFW) and low-Earth orbit satellite (LEO), that meets the BEAD Program's minimum technical requirements of speeds not less than 100 Mbps for downloads and 20 Mbps for uploads and latency less than or equal to 100 milliseconds.³

"BEAD" means the Broadband Equity, Access, and Deployment Program, authorized by the Infrastructure Investment and Jobs Act of 2021, Division F, Title I, Section 60102, Public Law 117-58, 135 Stat. 429 (November 15, 2021) (Infrastructure Act or Act), also known as the

Application Submission: Applicants must submit three forms to complete an application for Connect Illinois Round 4



Entity Submission Form

Purpose

Ensures entities applying for Connect Illinois Round 4 **meet NTIA BEAD qualification requirements**

Example materials to submit

- Entity-specific qualifications
- IL Conflict of Interest disclosure
- IL Mandatory Disclosures
- W-9 form

Submission frequency

Once per entity, regardless of number of projects to be submitted

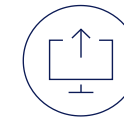


Project Submission Form

Ensures submitted **projects meet NTIA BEAD qualification requirements** and collects materials to be reviewed during the **Merit Review Scoring Process**

- Project-specific qualifications
- Project-specific scoring materials
- IL Project budget template
- IL Uniform Grant Application Form

Once per project



Application Submission Form

Serves as the **official submission of the application** to the State of Illinois, specifying the Entity / Project submissions to be reviewed by the State

- Entity Submission Form ID
- Project Submission Form ID

Once per project

Connect Illinois Round 4 Entity Form

Entity Form (Part 1)

This application form is part 1 of the submission process. Before proceeding, please review the BEAD-funded Connect Illinois Round 4 Entity Form. Please note, each entity should submit the Entity Form to be submitted in the Project Form (part 2) of the application. For Connect Illinois Round 4, you should submit *this Entity Form*. This form requests materials that will be reviewed to determine if you are eligible for funding. Qualification materials are not used in scoring but must be submitted to meet Federal and State requirements.

Pre-Qualification Participants: If you participated in the BEAD Pre-Qualification process, please indicate if you have been approved, unless you wish to submit updated information. If you are not a Pre-Qualification Participant, please indicate so. If you are a Pre-Qualification Participant, please indicate if your Participation Notice Letter is ready, as certain questions will only be asked if you are ready to participate.

Confidentiality Notice

All information submitted is subject to the Freedom of Information Act. If you have proprietary information, they may mark it "Confidential Information" to be presumptively exempt from disclosure. If denoted as confidential, the information provided in this form will be held confidential by the Department, pursuant to any law, regulation, or letter of understanding. Please indicate if you are providing respondent prompt notice so the applicant may seek a protective order.

Questions?

- Visit the [IOB website](#) for more information on BEAD.
- Reach out via email to broadband@illinois.gov

Administrative: Entity Information

This section requests basic identification information for your entity.

E.AD.1. Legal Entity Name * Please enter your legal entity name used in all company documents, including any filings with the FCC or the IRS.

E.AD.2. Doing Business As (DBA) Please enter the name that the legal entity is doing business as (DBA).

E.AD.3. Employer Identification Number (EIN) * Please enter the nine-digit Employer Identification Number (EIN) used in the BEAD Pre-Qualification process, please enter the exact EIN may result in the qualifications application process. In the event you are applying as a multi-partner entity, please enter the EIN that was used for SAM registration or, if you do not have an EIN, please contact the Department for more information.

E.AD.4. Type of Entity * Select the relevant type that best describes your entity.

- Private/For-Profit Company or Organization
- Public-Private Partnership
- Public Utility, Private Utility, or Public Agency
- Cooperative
- Municipality or political subdivision
- Non-Profit Organization
- Tribal Government
- Consortium
- Other

E.AD.4.E. Anti-collusion: Certification * Do you certify that you and any representative have not participated in the BEAD program within the last 12 months?

Part B: Managerial Capabilities

This section requests information about your entity to demonstrate compliance with BEAD requirements on managerial capabilities for subgrantees deploying network facilities (BEAD NOFO, pages 73-74).

E.B1. Résumés: Documentation * Provide 5-7 résumés for essential financial, technical, and managerial personnel who will support project implementation. Résumés should include educational experience, detailed descriptions of work history, and all relevant experience in undertaking projects of similar size and scope. (Permitted file types: PDF)

E.B2.A. Organizational chart(s): Personnel Documentation * Provide a personnel organizational chart that includes all relevant personnel who will support project implementation. Names and titles should be clearly identified for all positions. (Permitted file types: PDF, XLSX, DOCX, JPEG, PNG)

E.B2.B. Organizational chart(s): Entity Structure Documentation * Provide company structure organizational chart(s) detailing all parent companies, subsidiaries, and affiliates. If relevant, prospective subgrantees should also provide a narrative on upcoming organizational changes, including mergers, acquisitions, and organizational policies. (Permitted file types: PDF, XLSX, DOCX, JPEG, PNG)

E.B3. Managerial Readiness: Narrative * Provide a narrative of managerial readiness to manage a broadband services network. This narrative should describe the experience and qualifications of key management for undertaking this project, its experience undertaking projects of similar size and scope, recent and upcoming organizational changes including mergers and acquisitions, and relevant organizational policies. (2100 character limit, approx. 300 words)

1 Entity form

2 Project form



Connect Illinois Round 4 Project Form

Project Form (Part 2)

This application form is part 2 of the submission process for the project that the Entity Form has been completed for the BEAD-funded project. Before proceeding, please also review the BEAD-funded Connect Illinois Round 4 Project Form.

The Project Form requests materials to demonstrate that the applicant meets the Merit Review Scoring Process.

- This form begins with all qualification materials (all sections) for the application to be considered for BEAD funding per the purposes (see below).
- Section S contains all additional information not collected at the Merit Review Scoring Process. Information regarding the scoring criteria is located in [Proposal Volume II](#).

Applicants must submit this form for each project application that the applicant is applying for. This section provides a detailed explanation for each component of the form.

Confidentiality Notice

All information submitted is subject to the Freedom of Information Act. If you have any proprietary information, they may mark it "Confidential Information" to be presumptively exempt from disclosure, pursuant to the Freedom of Information Act. If denoted as confidential, the information provided in the application will be held confidential by the Department, pursuant to any law, regulation, or legal process. The Department will respond promptly to any request for a protective order.

Questions?

- Visit the [JOB website](#) for more information on BEAD.
- Reach out via email to broadband@illinois.gov

Part A: Project Overview and Locations Impacted

This section of the application requests an overview of the project and locations impacted by the proposed broadband project.

PA1. Project Overview: Narrative * Please provide a high-level, introductory overview of the project. Please include a summary description of the project scope (e.g., geographic area, count of BSLs/CALs to be served, technology); project budget, funds requested, and match provided; estimated time needed for start of deployment activities; and estimated time for deployment completion. Please be advised that this narrative may be publicly used in announcements following any awards made, if applicable. (3500 character limit, approx. 500 words)

PA2. Project Area Selection Sheet: Template * Please upload BOTH of the following files:

- The Project Area Selection Sheet from the [BEAD Project Area Selection Sheet](#) (located in the "Rd 4 - Instructions" tab of the application).
- The original, unaltered Project Area Selection Sheet template above.

Please ensure the files are named as follows: "PROJECT NAME_ProjectAreaExport.csv". For example, if the project name is "12-3456789-03_Project Area", the file should be named "12-3456789-03_ProjectAreaExport.csv". (Permitted file types: XLSX, CSV)

PA2.A. Locations that are Not Underserved, or Eligible CALs * Please indicate whether the project locations that are not underserved, underserved, or eligible CALs.
 Yes
 No

PA3. Notifying New Offerings to Customers: Narrative * Provide a description of how you plan to notify new customers that your proposal should be designed in a way that is accessible to all customers likely to encounter the applicant's services. Per BEAD requirements, to increase service areas that are designed to be served.

Part B: Technical Project-Based Qualifications

This section of the application focuses on the technical design aspects of the proposed broadband project. Applicants must provide a project design and other supporting materials demonstrating the capability to provide broadband service meeting or exceeding the BEAD program requirements. The project design materials must be certified by a currently licensed professional engineer. The project design materials must include the components listed below.

PB1. Detailed Project Schedule: Template * Please provide a detailed project implementation schedule, including buildout timeline and milestones, using the [template](#) provided. This document must be accompanied by a certification from a Professional Engineer. Please name the file using the following naming convention: "[PROJECT NAME]_Project Schedule.xlsx". For example, if the project was named in P.AD.1 as 12-3456789-03, it should be named "12-3456789-03_Project Schedule.xlsx". (Permitted file types: XLSX)

PB2. Network Design and Technical Narrative * Please provide a technical narrative and network design that support the proposed design. Both documents must be accompanied by a certification from a Professional Engineer. Detailed instructions on information required are included in the Application Guidebook. (Permitted file types: Shapefile [.shp, .shx, .dbf], .kml, .kmz, .zip, .tar, PDF)

PB2.A Network Design - Conduit Access: Narrative * If your project involves laying fiber-optic cables or conduit underground or along a roadway, please provide a narrative describing how you plan to comply with BEAD requirements to include interspersed conduit access points at regular and short intervals for interconnection by unaffiliated entities. Per the BEAD NOFO, any Funded Network deployment project that involves laying fiber-optic cables or conduit underground or along a roadway must include interspersed conduit access points at regular and short intervals for interconnection by unaffiliated entities. Where a project proposes to lay conduit, prospective subgrantees must propose to deploy a reasonable amount of excess conduit capacity and propose a conduit access point interval as part of the grant application process, and the State will consider the adequacy of the prospective subgrantee's proposed excess conduit capacity and access points when evaluating the application. If your proposed project does not involve laying fiber-optic cables or conduit underground or along a roadway, please write "Not applicable". (3500 character limit, approx. 500 words)

3 Application Submission form



Additional Resources & Helpful Links

Connect Illinois Round 4 NOFO Preview: [\[Link\]](#)

Connect Illinois Round 4 App Guidebook: [\[Link\]](#)

BEAD Landing Page: [\[Link\]](#)

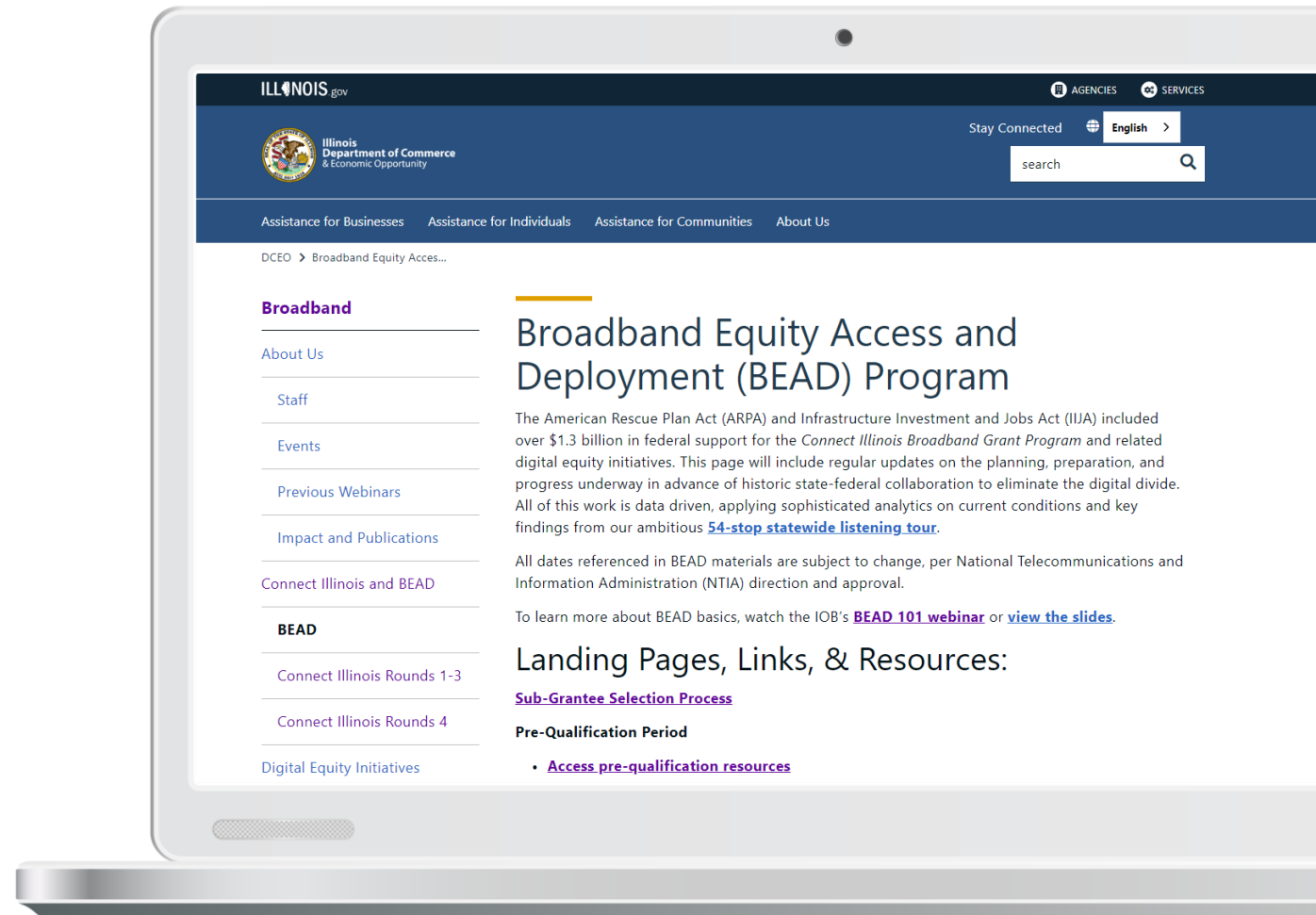
BEAD Subgrantee Selection Process Page: [\[Link\]](#)

- Includes materials from BEAD Deep Dive Webinar Series and FAQs

Connect Illinois Initial Proposal, Volume II: [\[Link\]](#)



For further questions, please email broadband@illinois.gov





Stay informed!

**Sign up to receive updates from the
Illinois Office of Broadband (IOB)**

<https://bit.ly/IOBPartner>

Sign up for Illinois Broadband Connections Newsletter

<https://bit.ly/IOBnewsletter>