



Illinois
Department of Commerce
& Economic Opportunity
OFFICE OF BROADBAND
JB Pritzker, Governor



UNIVERSITY OF ILLINOIS SYSTEM

Closing the Digital Divide in Illinois

BEAD Update Webinar: Wave 2

May 27, 2025

Topics for Discussion Today

1

Recap of BEAD

2

Serviceability Updates Process

3

Wave 1 Results

4

Overview of Wave 2

1

Recap of BEAD

BEAD is a \$42B federal grant program that aims to bring high-speed internet to all Americans

Note: NTIA has communicated that changes to the program are coming following a rigorous review by the U.S. Dept. of Commerce

\$42.45 billion

Funds provided for BEAD

The Broadband Equity, Access, and Deployment (BEAD) Program is a federal grant program that aims to get all Americans online by funding partnerships between states or territories, communities, and stakeholders to build infrastructure where high-speed internet is currently unavailable

Program highlights

Eligible entities

- All 50 States, District of Columbia, and Puerto Rico
- Other Territories: U.S. Virgin Islands, Guam, American Samoa, and the Commonwealth of the Northern Mariana Islands

Example eligible uses of funds

- Planning for the deployment of high-speed Internet, including conducting research, collecting data, outreach, and training
- Deploying or upgrading Internet in un/underserved areas
- Improving service to community anchor institutions
- Installing Internet and Wi-Fi in multi-unit residential buildings
- Workforce development, including Registered Apprenticeships and pre-apprenticeships, community college and/or vocational training for broadband-related occupations to support deployment, maintenance, and upgrades

What are the goals of BEAD?



The BEAD Program awarded Illinois \$1.04 billion to connect all unserved and underserved locations to broadband over the next 5 years



Ensure universal coverage across all un/underserved locations in the state, maximizing deployment of end-to-end fiber, and only using non-fiber where fiber costs are extremely high¹



Prioritize projects providing broadband access to unserved and underserved locations and community anchor institutions, Wi-Fi equipment for Multi-Dwelling Units (MDUs) then other digital equity and inclusion priorities²



Run subgrantee selection process within one year of approval of the Initial Proposal, and complete implementation within four years of receipt of funds³

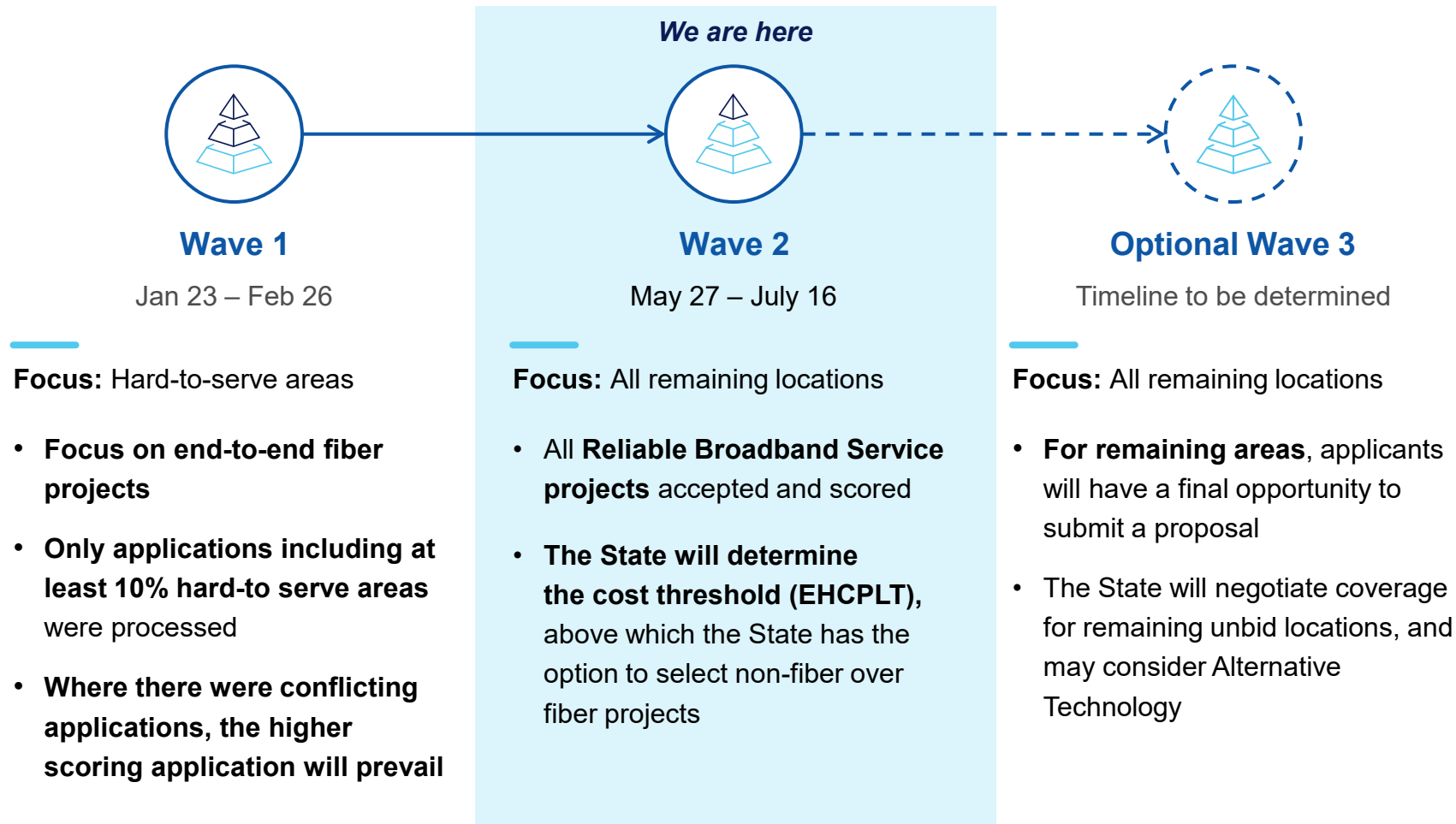


Focus on improving broadband affordability through a low-cost broadband service option, and a middle-class affordability plan⁴

1. Page 14 of BEAD NOFO, on the definition of Priority Broadband Project
2. Page 33 of BEAD NOFO, on the allocation of grant funds
3. Page 65 of BEAD NOFO, on deployment deadlines and benchmarks
4. Page 42-46 of BEAD NOFO, on inclusion of affordability in the BEAD scoring criteria

Source: [BEAD NOFO](#)

The subgrantee selection process consists of up to three waves - the first Wave is complete, and the second Wave opens today



Note: Timeline is tentative based on currently available information and may change

Source: Connect Illinois Initial Proposal Volume II

What are PAUs?

Project Area Units (PAUs) are clusters of eligible locations no more than five miles apart

PAUs function as the “building blocks” of applications - applicants can apply to serve one or more PAUs, and PAUs cannot be separated

Detailed definitions follow

Before we discuss further, let's define a few concepts and terms

Project Area Unit (PAU)

A collection of un/underserved Broadband Serviceable Locations (BSLs) and Community Anchor Institutions (CAIs) eligible for an application



PAUs do not overlap and collectively contain all un/underserved locations and eligible CAIs in the State

If awarded a PAU, a subgrantee must deploy to all included eligible locations

Broadband Serviceable Location (BSL)

A business or residential location at which fixed broadband access is, or can be, installed, where:

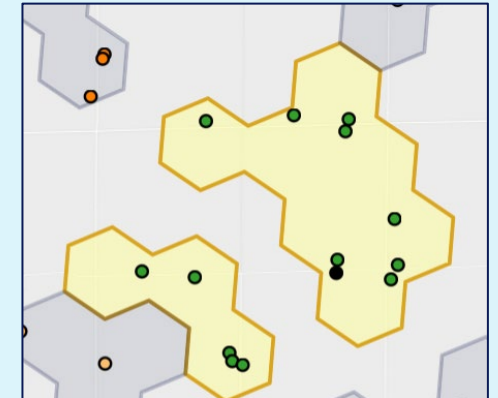
- **Unserved:** Has access to broadband service with speeds of <25/3Mbps
- **Underserved:** ≥25/3 and <100/20Mbps
- **Served:** ≥100/20Mbps

Community Anchor Institution (CAI)

An entity that facilitates wider use of broadband service by vulnerable populations (e.g., schools, libraries, senior centers)¹

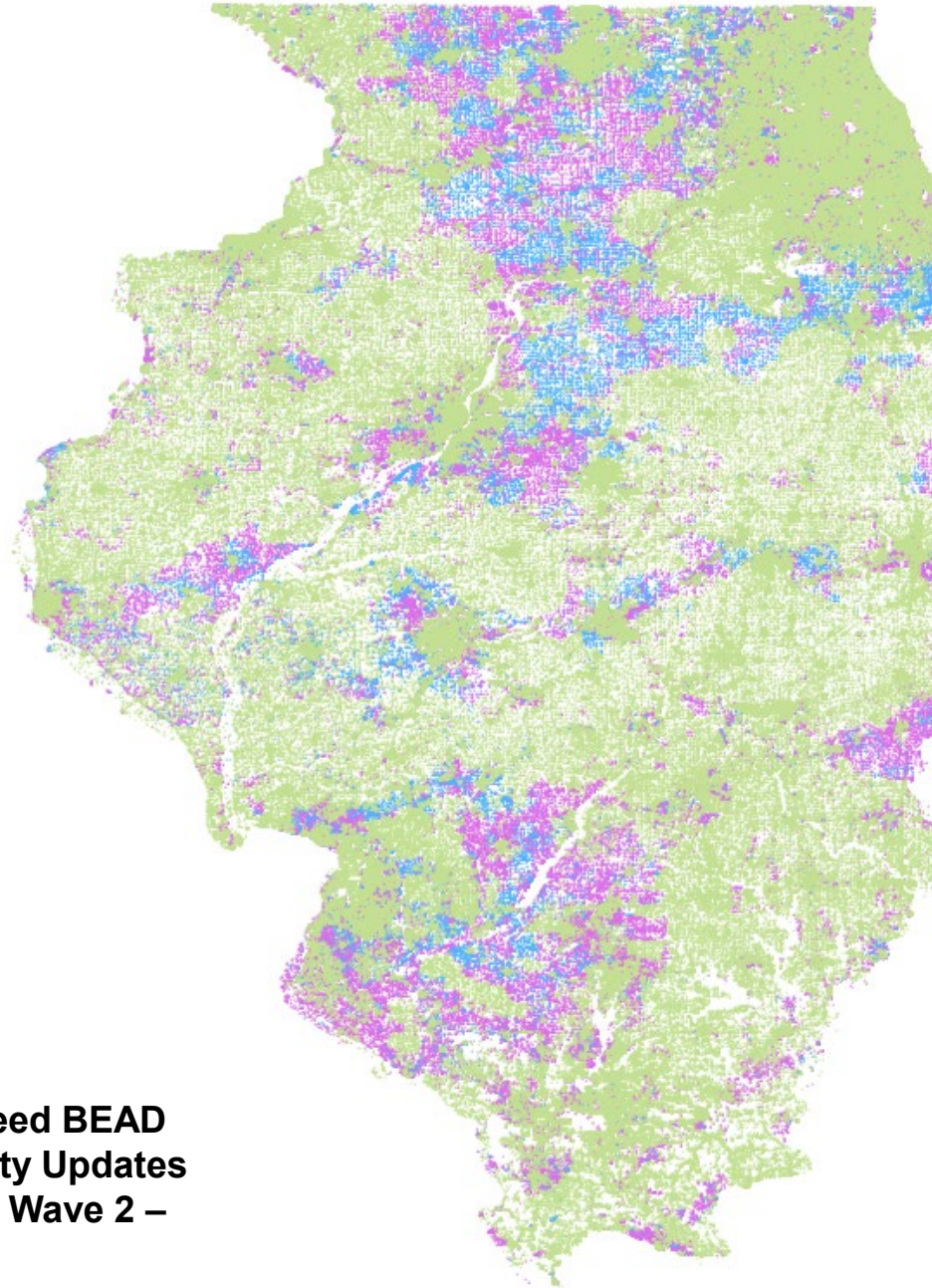
CAIs without access to 1Gbps symmetrical broadband service are eligible for BEAD funding

Illustration of a PAU, where each point shown is an eligible location



1. Details on Illinois's definition of CAIs can be found in Illinois's BEAD Initial Proposal Volume I

**175,293
locations are
eligible to be
connected
through BEAD**



**Broadband service
availability in Illinois, per
BEAD-eligibility data**

~4.2M

Total Broadband Serviceable
Locations (BSLs)

~107K (~3%)

Unserved BSLs

(locations with <25/3Mbps speed)

~65K (~1%)

Underserved BSLs

(locations with ≥25/3Mbps and
<100/20Mbps speed)

~172K
BEAD-
eligible
BSLs

~4.0M (~96%)

Served BSLs

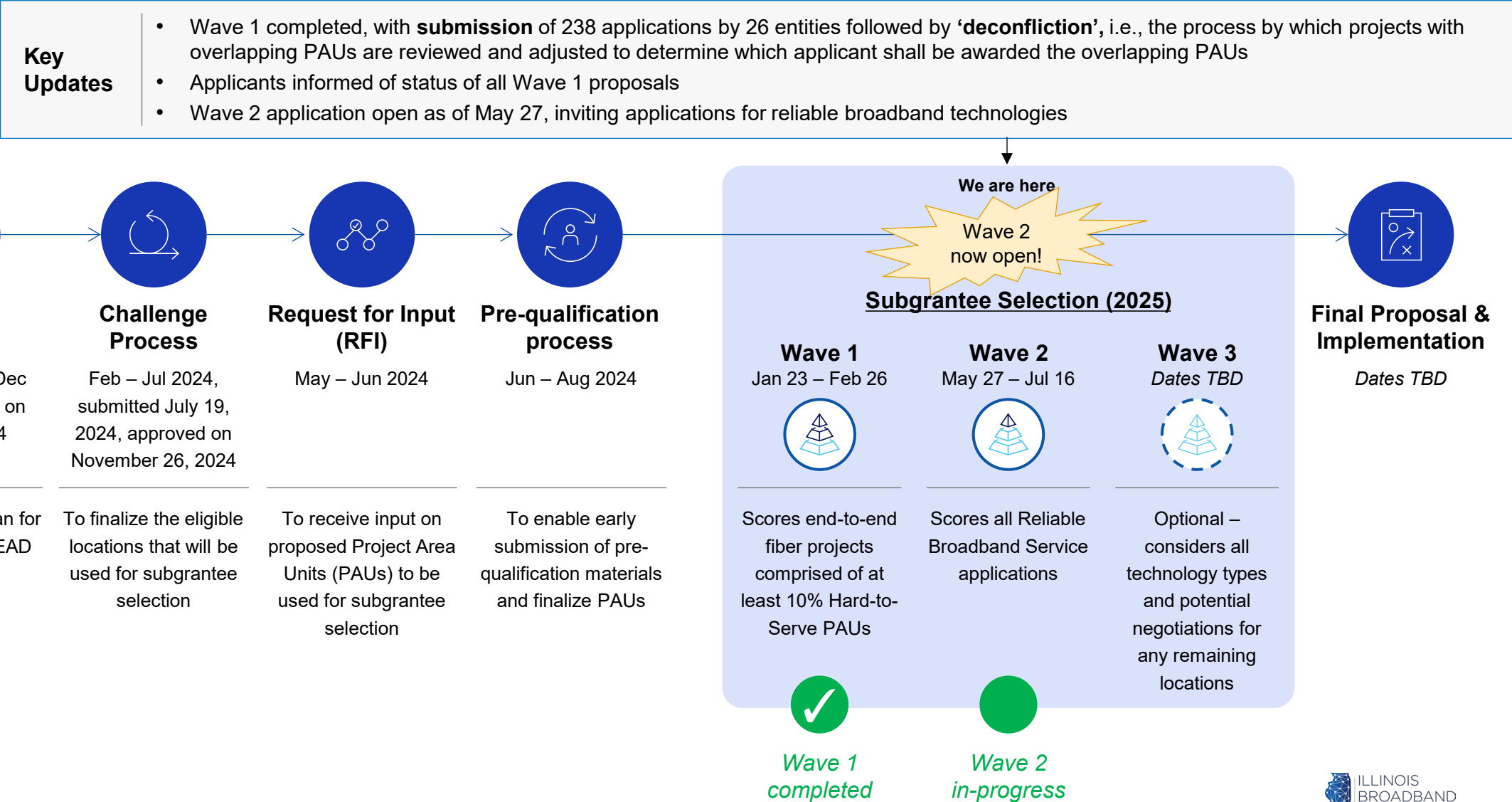
(locations with ≥100/20Mbps speed)

Plus **3,356** eligible community anchor
institutions (CAIs)

**Note: Locations deemed to no longer need BEAD
funding based on the latest Serviceability Updates
Process will be published at the start of Wave 2 –
*more details to follow***

Overview of the BEAD-Funded Connect Illinois Round 4 timeline


PRELIMINARY TIMELINE - SUBJECT TO CHANGE INFORMATION PROVIDED ON AN INFORMATIONAL BASIS AND DOES NOT SUPERCEDE ORIGINAL DOCUMENTS



Recap: Pre-qualification participants can apply their pre-approved qualifications to their Entity Submission Form response

ILLUSTRATIVE INFORMATION PROVIDED ON AN INFORMATIONAL BASIS AND DOES NOT SUPERCEDE ORIGINAL DOCUMENTS

Illustrative Pre-Qualification Final Determination email



Dear Sample Corporation (EIN: 12-3456789),

The Illinois Office of Broadband appreciates your participation in the Pre-Qualification process for the BEAD-funded Connect Illinois Round 4. This letter is a summary of all approved qualifications from the Pre-Qualification process, and we encourage you to participate in the formal subgrantee selection process when it opens.

(1) Summary of Approved Qualifications

The following qualifications have been approved across your pre-qualification submissions:

- A. Financial Capabilities:** A1, A2
- B. Managerial Capabilities:** B1
- C. Technical Capabilities:** C2
- D. Legal and Regulatory Compliance:** D1, D2
- E. Operational Capabilities:** E2
- F. Ownership:** F1
- G. Other Public Funding:** G1

During the subgrantee selection process, you do not need to re-submit materials for approved qualifications, unless any materials originally submitted to support an approved qualification have become outdated. However, the State reserves the right to re-assess the qualifications, capabilities, and resources of all prospective subgrantees based on the application-specific technical, geographical, and financial details of the actual proposed projects prior to making final awards.

(2) Next Steps for Application Process

To link your pre-approved qualifications to your application during the subgrantee selection process, please enter the following in the Entity Submission Form (Part 1 of the application):

- EIN:** 12-3456789
- Pre-Qualification Participant ID:** PPQ-9999T
- Pre-Qualification Approved Qualifications:** Please populate based on list provided above



How to apply pre-approved qualifications during Connect Illinois Round 4

Navigate to **Pre-Qualifications Process** section in the **Entity Submission Form**

Respond **Yes** to **E.AD.8.A**

Enter your **Pre-Qualification Participant ID (PPQ-####X)** from your **Final Determination email** in **E.AD.8.B**

From the **pre-approved qualifications listed in your Final Determination email**, select those that you would like to reflect in your application in **E.AD.8.C**, which allows you to skip corresponding questions in the Entity Submission Form

ILLUSTRATIVE

Administrative: Pre-Qualifications Process

E.AD.8.A. Pre-Qualification Process Participation * Did you participate in the BEAD Funded Connect Illinois Round 4 Pre-Qualification process?

☒ Yes ☐ No

Clear Selection

E.AD.8.B. Pre-Qualification Participant ID * Please enter the PPQ ID from the Participation Notice Letter provided by the Illinois Office of Broadband. This Participation Notice Letter contains a Pre-Qualification Participant ID (starting with PPQ), which will connect your approved qualifications to this submission.

Please double-check this is correctly entered before proceeding. Failure to enter the valid ID may result in your application not being considered during this Wave.

PPQ-9999T

+ Add result

E.AD.8.C. Pre-Qualification Approved Qualifications * Using the Pre-Qualification Participation Notice Letter, select all qualifications below that have been denoted "APPROVED" on the Pre-Qualification Participation Notice Letter. This will hide all qualifications for which you have been approved. If materials need to be updated, even if a qualification is approved, do not select the qualification in the list.

Note: You are responsible for cross-checking and confirming the selected qualifications are accurate and correct. Failure to submit all qualifications required in this form, either by carrying over your pre-approved qualifications or by submitting new materials for review, may result in your application not being considered during this Wave.

☒ A1 ☒ A2 ☐ A3

Note: All RDOF awardees are required to submit updated materials for G4

2

Serviceability Updates Process

Serviceability Updates Process - Overview

What is it?

- Serviceability updates refers to the process of updating the universe of BEAD-eligible location by identifying locations which no longer require BEAD funding due to sufficient evidence of existing service
-

Why is it conducted?

- Recognizing time that has passed since the challenge process, Serviceability Updates allows Illinois to ensure BEAD resources are applied most effectively, where they are needed most
-

How are updates determined?

Updates were made to the BEAD-eligible locations based on:

- Evidence submitted by Internet Service Providers
- Internal analysis
- Comparison to FCC National Broadband Map

‘Reason codes’ behind updates

Illinois made updates to its universe of BEAD-eligible locations across five Reason Codes:

1. Should not have a broadband connection (e.g., location is demolished, is a support structure)
2. Does not need mass-market broadband due to nature of use
3. Was removed from latest version of FCC Fabric
4. Already served by an enforceable State/Federal commitment
5. Already served by non-subsidized service (privately funded network)

Results of Serviceability Updates Process

Based on the submissions from Jan-Feb 2025, ~10k locations have been identified that do not require BEAD funding, in the following **categories**:

Reason Code	Number of No-BEAD locations
1: Does not need mass-market broadband due to nature of use (non-serviceable locations)	92
3: Locations removed between Fabric v3 and v6 (Illinois-wide)	6,951
4: Already served by an enforceable State/Federal commitment (verified by State/Federal agencies)	1,117
5: Already served by privately funded network	2,058

- These locations have been **incorporated for Wave 2**
- On the Project Area Selection Tool, these “no-BEAD” locations are **identified separately** and are **not included in the total count** of un/underserved locations
- **Note:** Wave 1 preliminary awardees should expect communication from the IOB to descope no-BEAD locations

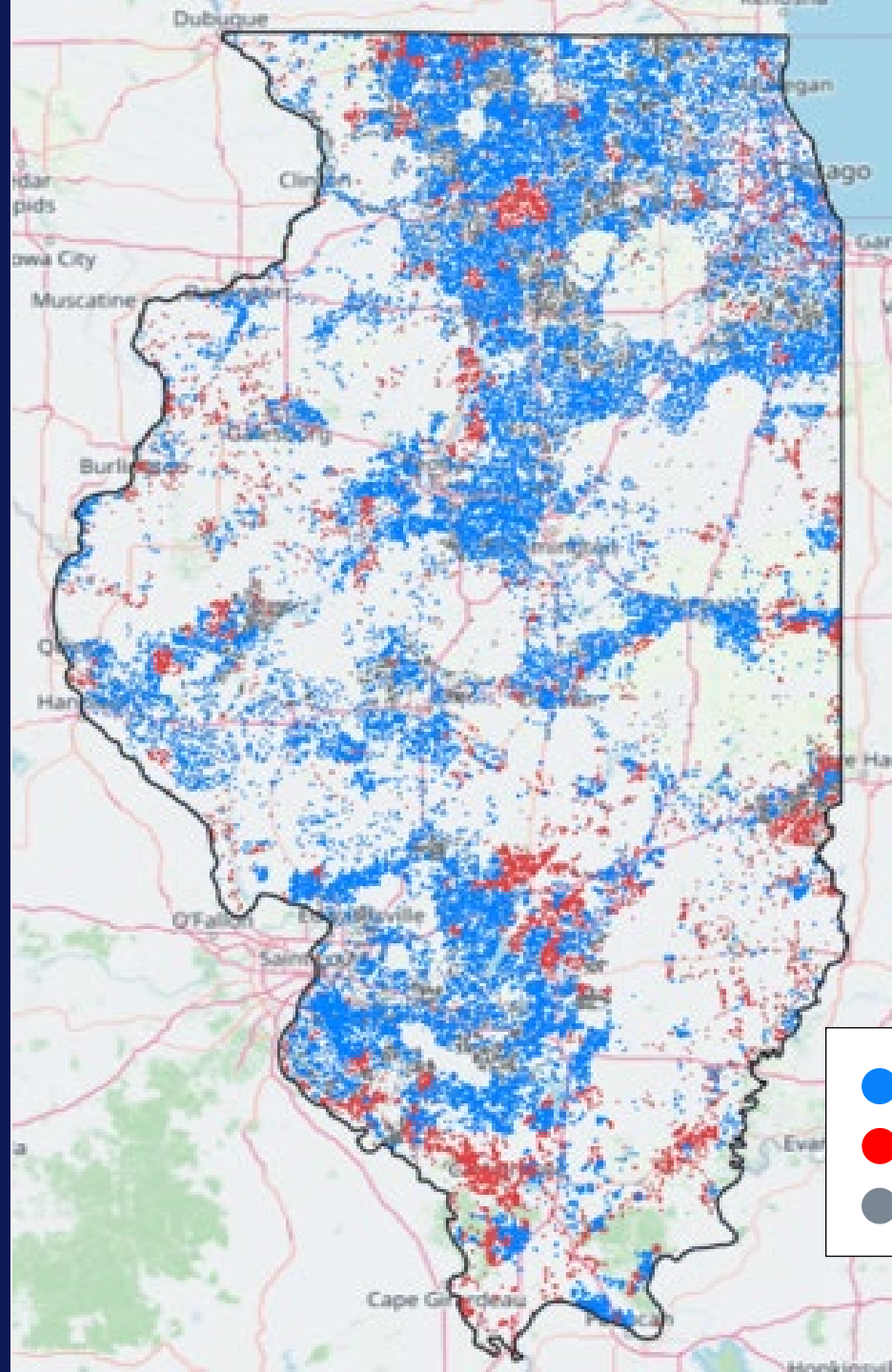
3

Wave 1 Results

Illinois received 238 applications covering 86% of eligible locations statewide and 85% of hard-to-serve project area units (PAUs) in Wave 1

AS OF MARCH 16, 2025

Source: Wave 1 applications received by IOB during the Connect Illinois Round 4 BEAD subgrantee selection process



Wave 1 application summary

238

Applications received in Illinois, totaling ...

~151K (86% of total)

Eligible locations

5,615 (76% of total)

Regular PAUs

1,582 (85% of total)

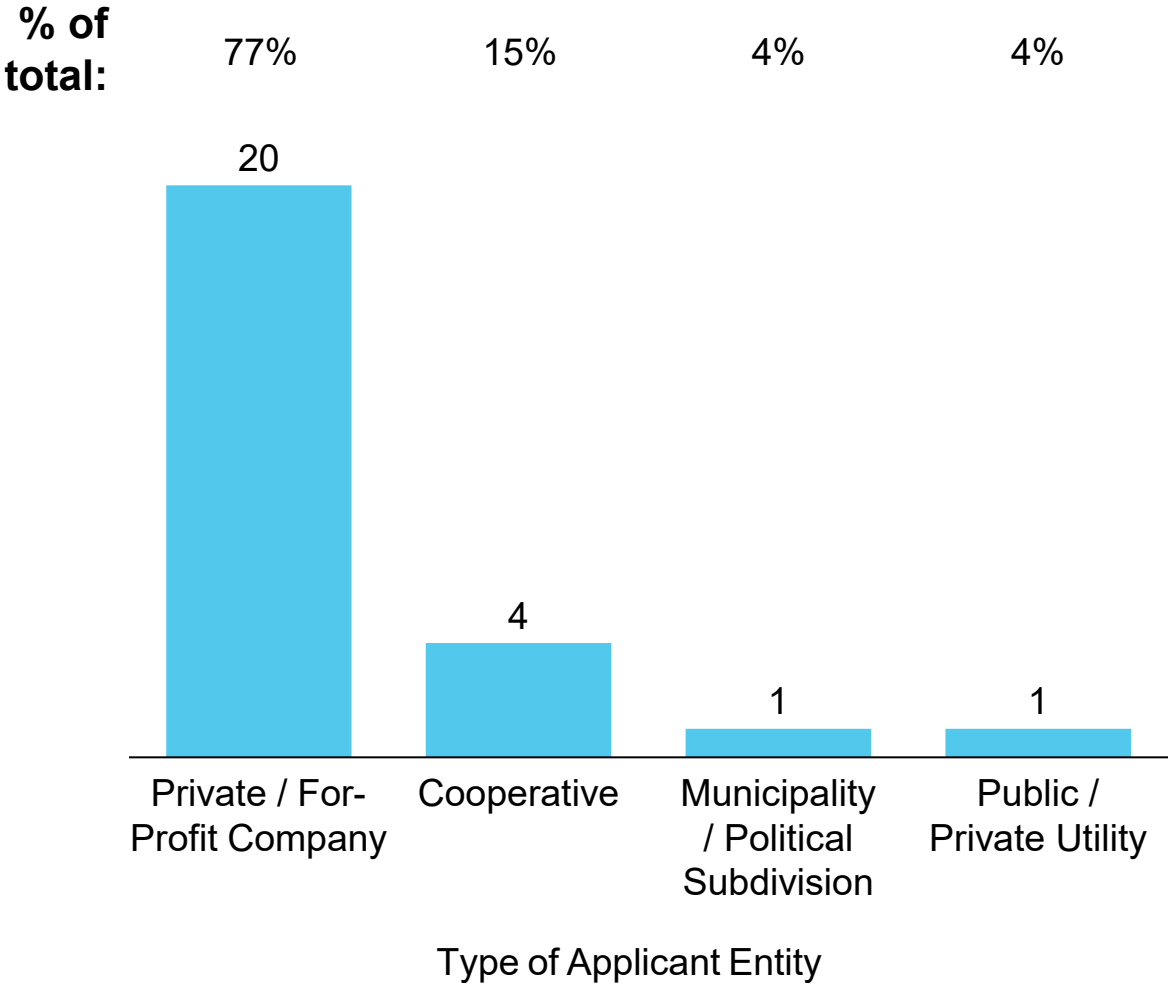
Hard-to-serve PAUs

- Regular PAUs with ≥ 1 bid
- Hard-to-serve PAUs with ≥ 1 bid
- PAUs that received 0 bids

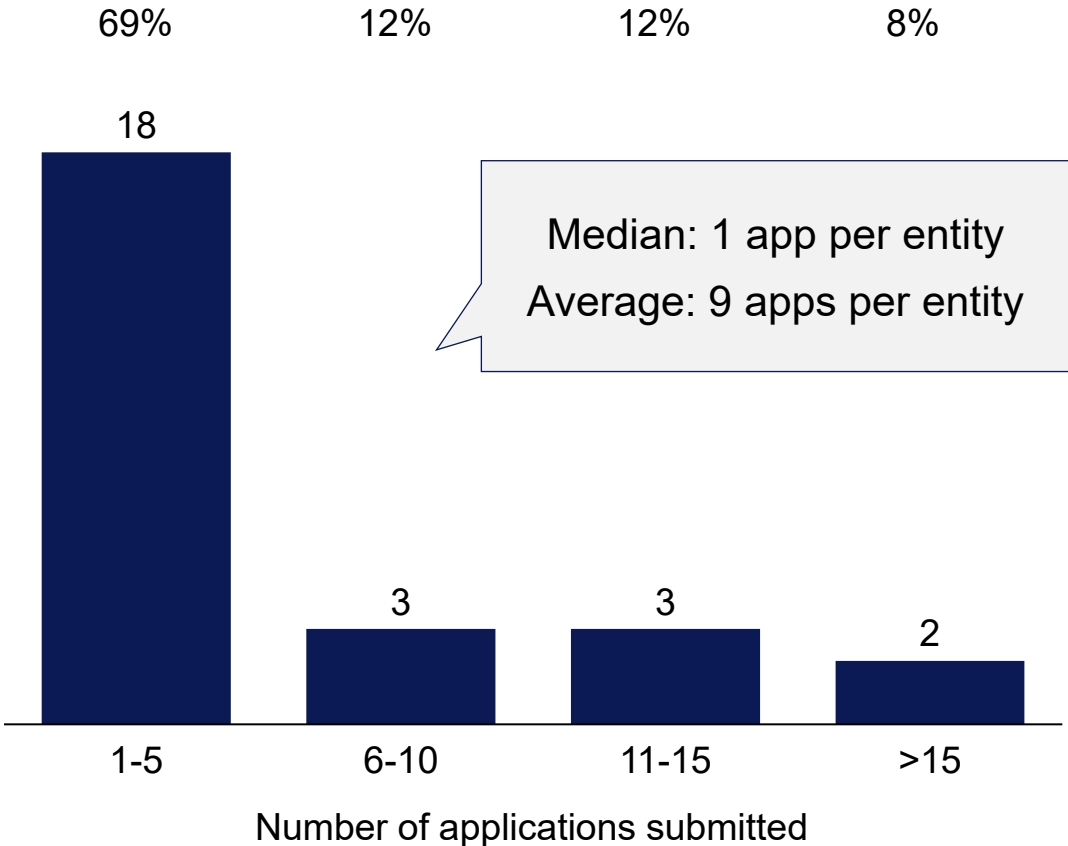
26 entities submitted applications in Wave 1 across 4 different entity types with a median of 1 application submitted per entity

AS OF MARCH 31, 2025

Wave 1 number of entities that submitted applications by type of entity



Wave 1 number of entities by number of applications submitted

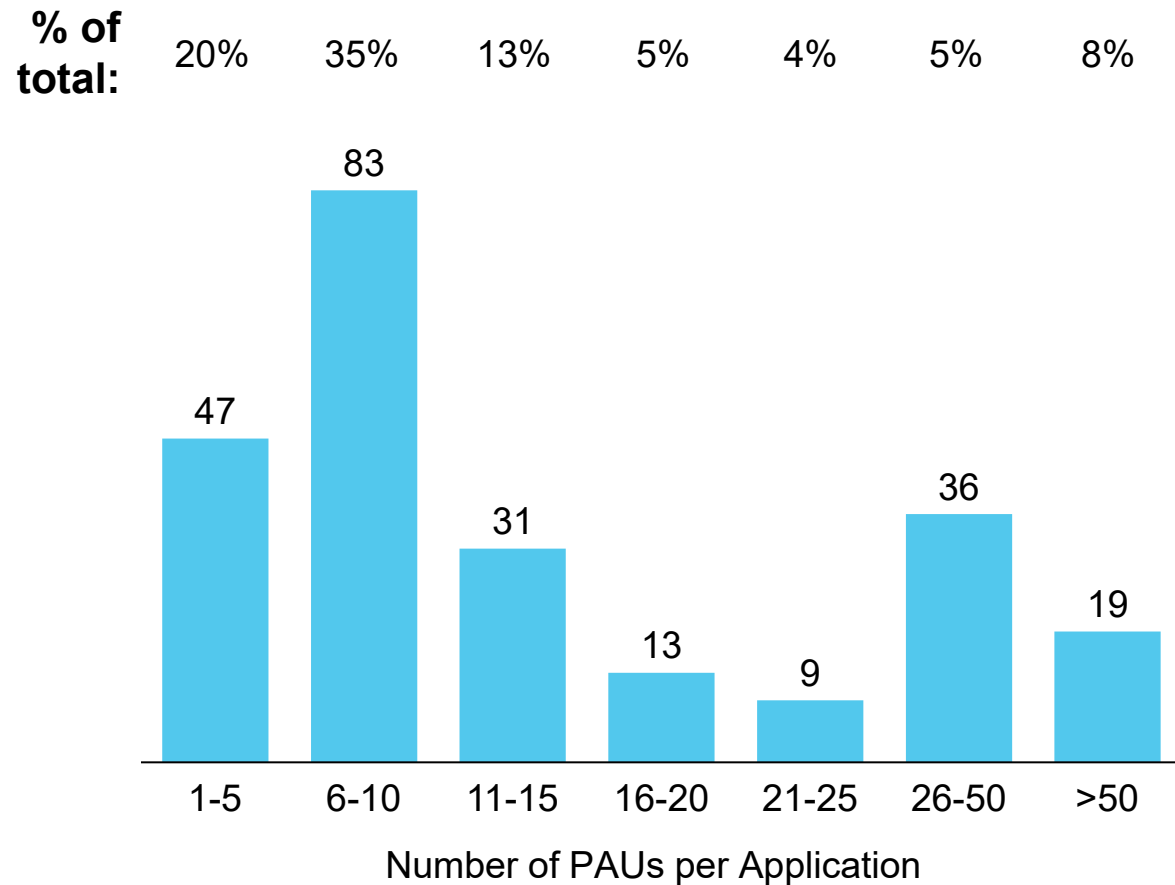


Wave 1 saw applications of varying size and competition across PAUs

AS OF MARCH 16, 2025

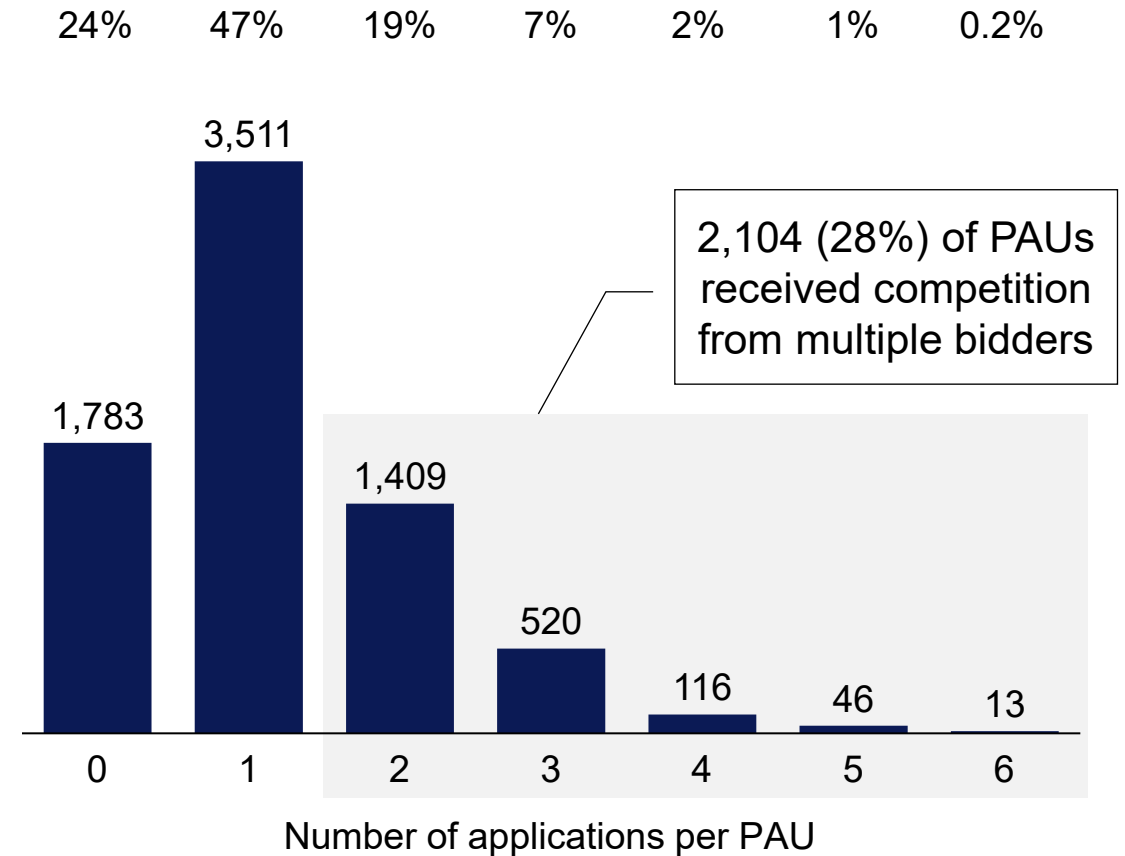
Most applications include 10 or fewer PAUs

Number of applications



Nearly 30% of PAUs received competing proposals

Number of PAUs

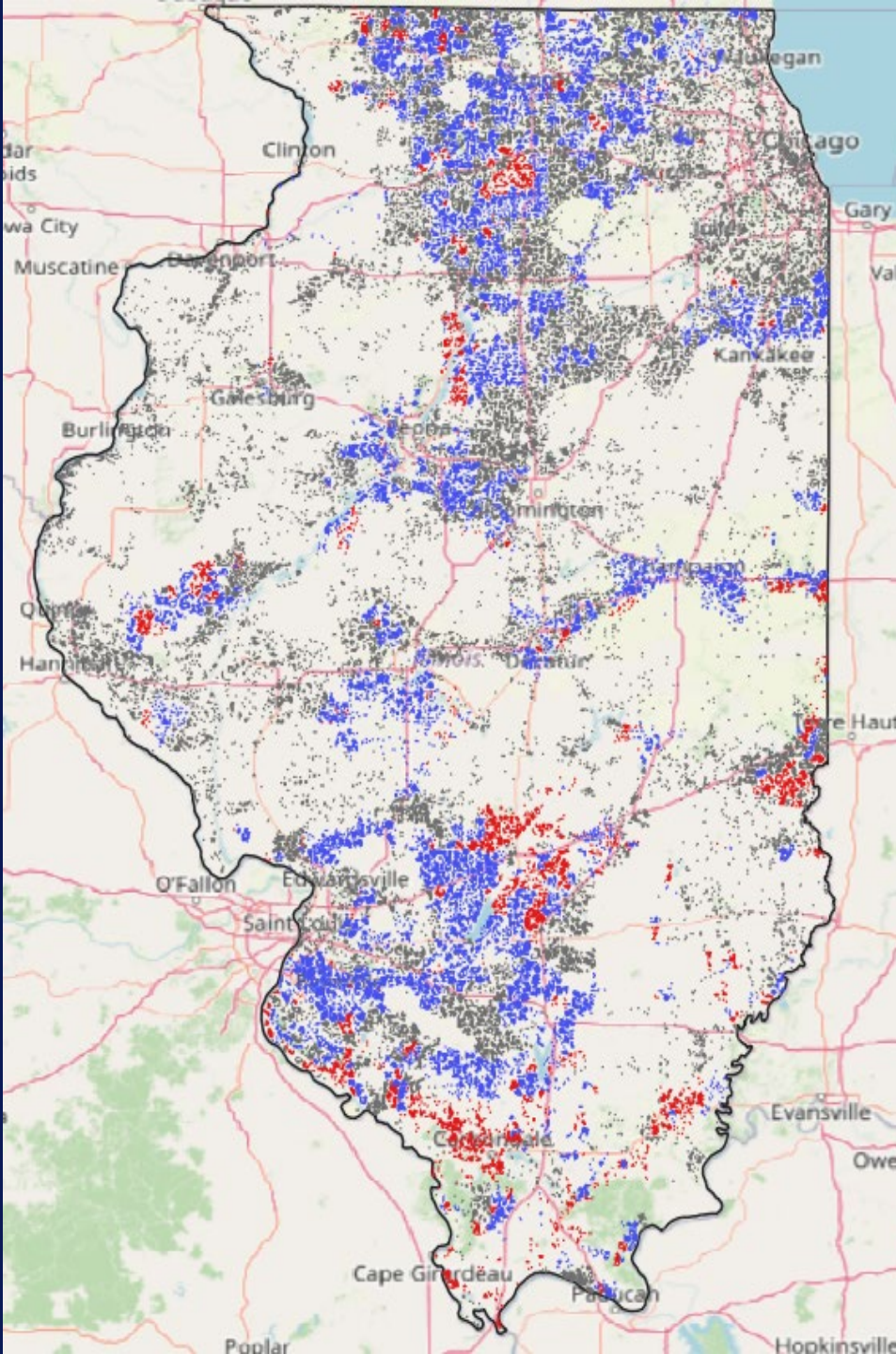


In Wave 1, Illinois preliminarily selected 137 applications covering 57% of eligible locations statewide and 35% of hard-to-serve project area units (PAUs)

AS OF MAY 23, 2025

Note that awards are preliminary, subject to comparison against the Extremely High Cost per Location Threshold (EHCPLT), negotiations, and NTIA approval

Source: Wave 1 applications received by IOB during the Connect Illinois Round 4 BEAD subgrantee selection process



Wave 1 preliminary selection summary

137

Preliminarily selected applications, totaling ...

~94K (57% of total)

Eligible locations

● **1,686** (31% of total)
Regular PAUs

● **628** (35% of total)
Hard-to-serve PAUs

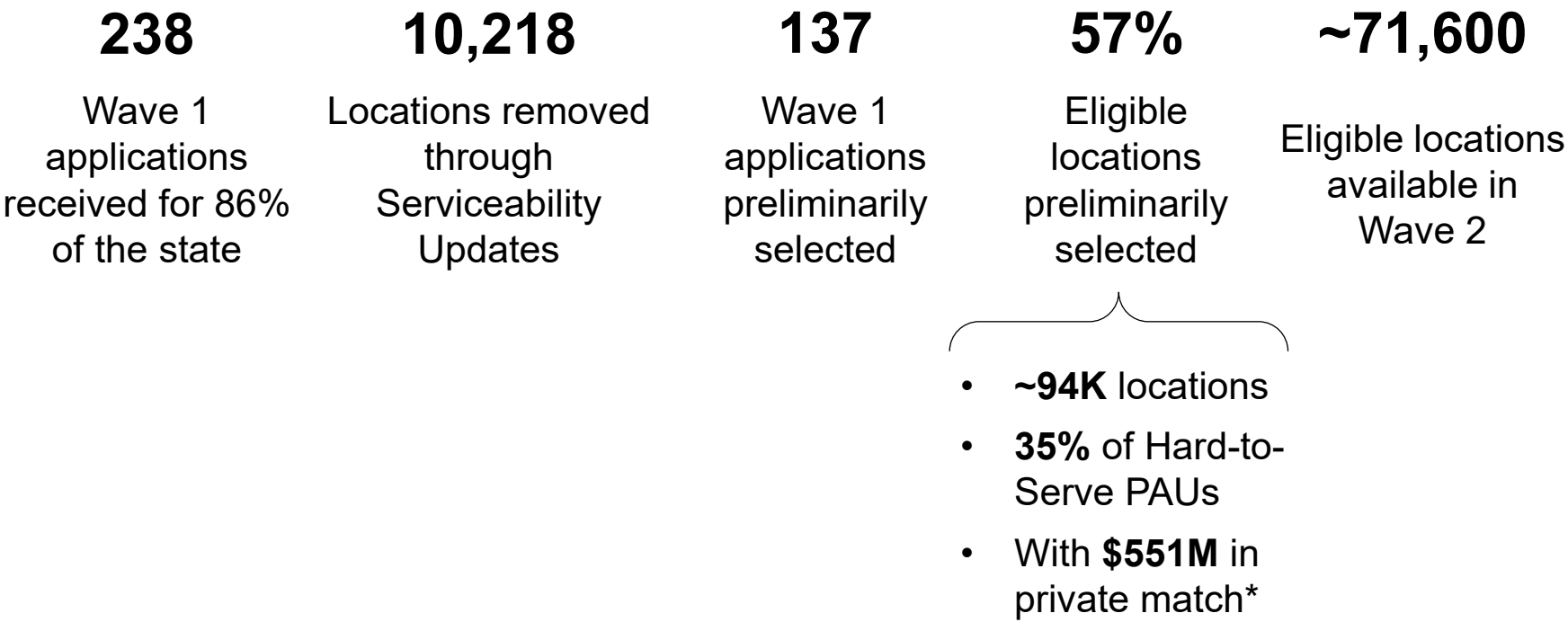
- Regular PAUs with Wave 1 preliminary selectee
- Hard-to-serve PAUs with Wave 1 preliminary selectee
- Remaining PAUs in IL

Overview of Wave 1

Requirements:

- End-to-end fiber projects
- At least 10% Hard-to-Serve (HTS) project area units (PAUs)
- HTS PAUs contiguous with other PAUs

Highlights:



** May be reduced in tandem with descoping “no-BEAD” locations*

1. Hard-to-serve Project Area Unit is a Project Area Unit that the State has designated as hard to serve, meeting at least one of the following criteria: A) Has a high proportion of unserved BSLs; B) Contains a high proportion of BSLs that have had little provider interest or outcomes in prior grant rounds; C) Is in a Persistent Poverty County; or D) Is in a High-Cost Area (HCA).

2. Contiguous Project Area Units mean there are no non-selected Project Area Units in the way when a straight line is drawn between the selected Hard-to-serve Project Area Unit(s) and the closest selected non-Hard-to-serve Project Area Unit(s).

Overview: Preliminary Selection

What does 'Preliminarily Selected' mean?

Projects that met state and federal requirements AND earned the highest scoring for their selected PAUs have been preliminarily selected to serve their proposed project area

Subset of proposals with a high BEAD outlay are carried over to Wave 2 for review against other proposals to ensure ample funding for remaining locations

**** Grant awards will not be issued and construction cannot begin until AFTER the completion of the entire 2-3-wave sub-grantee selection process and NTIA approval***

**** The IOB cannot disclose preliminarily awarded entities until after NTIA approval***

Why are selections 'preliminary'?

What may occur that will lead to changes in the award?

- **Comparison against the Extremely High Cost per Location Threshold (EHCPLT)**, to be defined by IOB at close of Wave 2
- **Further budget due diligence** to ensure funds are used most efficiently
- **Descoping of locations that no longer require BEAD funding** based on the [Serviceability Updates](#) process
- Scope adjustments to **incorporate additional PAUs**
- **Final approval** by the Illinois DCEO and NTIA

Notification to applicants

- All Wave 1 applicants today will receive a letter explaining Wave 1 results, as well as an Excel attachment with the results of all of their project applications
- Results in the attachment are listed by Project Area Unit (PAU) within each PFS

Sample letter notifying Wave 1 results

Thank you for submitting your application for Wave 1 of the BEAD-funded Connect Illinois Round 4 Program. The Illinois Office of Broadband (IOB) has completed the merit-based review of the applications submitted in Wave 1, in accordance with the evaluation criteria set forth in the Notice of Funding Opportunity.

Preliminary results are now available, and the attached Excel file provides the result for each of your entity's Project Form Submissions (PFS) and associated Project Area Units (PAUs). Preliminarily awarded PAUs (excluding applicant names) are also reflected on the [Project Area Selection Tool](#).

As a reminder, results at this stage are **preliminary, subject to change, and subject to final approval** by the Illinois Department of Commerce and Economic Opportunity (DCEO) and National Telecommunications and Information Administration (NTIA). The IOB is not permitted to disclose identifying information about awarded applicants until after NTIA approval, which will follow the conclusion of the sub-grantee selection process and submission of the state's Final Proposal.

The attached Excel document includes the following tabs:

Name of Excel Tab	Description and Next Steps
1. Preliminarily selected	<ul style="list-style-type: none">List of PFSs and associated PAUs for which an application has been preliminarily selected. Note that this list of PAUs will be either:<ul style="list-style-type: none">The full set of PAUs an applicant applied for in a given PFS; or,An automatically –descoped list of PAUs for a given PFS, if the project met the threshold for auto-deconfliction. Further details on the auto-deconfliction process are defined in the Application Guidebook.
2. Not preliminarily selected	<ul style="list-style-type: none">List of PFSs and associated PAUs for which an application has not been preliminarily selected, based on overlap with higher scoring applications.Of the PAUs included in this tab, any PAUs that were not part of preliminarily selected applications remain available for application in Wave 2.As a next step, applicants are encouraged to submit new applications in Wave 2, based on available PAUs in the Project Area Selection Tool.
3. Preliminary selection summary	<ul style="list-style-type: none">Summary of preliminarily selected PAUs in first tab, by PFS.Includes the PFS number, BEAD outlay tentatively allocated for the given submission, and whether the application was auto-deconflicted.

	<ul style="list-style-type: none">Please note:<ul style="list-style-type: none">Tentative BEAD outlay allocations are subject to change based on further due diligence and negotiations, and descope of locations which no longer require BEAD funding ("No BEAD" locations).For auto-deconflicted submissions, the BEAD outlay is automatically descoped using the approach outlined in Illinois' Initial Proposal Volume II.
4. Roll over to Wave 2	<ul style="list-style-type: none">List of PFSs and associated PAUs that have been rolled over to Wave 2 for review, for these potential reasons:<ul style="list-style-type: none">For comparison against the Extremely High Cost Per Location Threshold (EHCPLT).Due to ineligibility for Wave 1 (e.g., did not meet Hard to Serve or contiguity requirements).Any PAUs included in this tab remain available for other project applications in Wave 2.As a next step, applicants can either keep their submission as is, or may consider submitting revised materials to make their application more competitive in the second wave. Updated materials (i.e., budget, pro forma) may be emailed directly to broadband@illinois.gov before the close of Wave 2.

As this award is **preliminary**, it is subject to comparison against the Extremely High Cost per Location Threshold (EHCPLT), to be defined by the IOB at the close of Wave 2. Following the definition of the EHCPLT, preliminarily selected applications from Wave 1 found to be above the threshold will be given the opportunity to amend their applications to come into compliance with the threshold, including the opportunity to adjust the technology mix of their proposals.

The Office of Broadband's mission is to reach the most cost-effective budget that allows Illinois to maximize grant funding to meet the BEAD Program's mandate for universal connectivity. To this end, the IOB will also be contacting preliminary awardees for further budget due diligence to ensure funds are used most efficiently, including the descope of locations that no longer require BEAD funding based on the [Serviceability Updates](#) process. These locations and associated funding will be descoped from BEAD awards.

Thank you for your participation in Wave 1 and commitment to achieving universal connectivity in Illinois. The Office of Broadband encourages you to participate in the Wave 2 application window, open from May 27 – July 16, 2025. Wave 2 invites applications for all [Reliable Broadband Technologies](#), and does not have a Hard to Serve requirement. For further details, please visit the [BEAD Sub-Grantee Selection Process webpage](#).

Should you have any questions, please email Broadband@illinois.gov.

Illustrative attachment with Wave 1 results

	A	B	C	D
1	Project_ID	PAU_ID		
2	PFS-0000	01-0001		
3	PFS-0000	01-0002		
4	PFS-0000	01-0003		
5	PFS-0000	01-0004		
6	PFS-0000	01-0005		
7	PFS-0001	02-0001		
8	PFS-0001	02-0002		
9	PFS-0001	02-0003		
10	PFS-0001	02-0004		
11	PFS-0001	02-0005		
12				
13				

Illustrative

	A	B	C
1	Project_ID	Tentative Award	Autodeconflicted
2	PFS-0000	\$1,000,000	N
3	PFS-0001	\$750,000	Y
4			
5			
6			
7			
8			
9			
10			
11			
12			
13			

Illustrative

4

Overview of Wave 2

Application Submission: Applicants must submit three forms to complete an application for BEAD-funded Connect Illinois Round 4



Entity Submission Form

Purpose

Ensures entities applying for Connect Illinois Round 4 **meet NTIA BEAD qualification requirements**

Example materials to submit

- Entity-specific qualifications
- IL Conflict of Interest disclosure
- IL Mandatory Disclosures
- W-9 form

Submission frequency

Once per entity, regardless of number of projects to be submitted
Note: Entities who **applied in Wave 1** do not need to resubmit entity forms



Project Submission Form

Ensures submitted **projects meet NTIA BEAD qualification requirements** and collects materials to be reviewed during the **Merit Review Scoring Process**

- Project-specific qualifications
- Project-specific scoring materials
- IL Project budget template
- IL Uniform Grant Application Form

Once per project



Application Submission Form

Serves as the **official submission of the application** to the State of Illinois, specifying the Entity / Project submissions to be reviewed by the State

- Entity Submission Form ID
- Project Submission Form ID

Once per project

1 Entity form

Connect Illinois Round 4 Entity Form

Entity Form (Part 1)

This application form is **part 1** of the submission process. Before proceeding, please review the BEAD-funded Connect Illinois Round 4 Entity Form.

Please note, each entity should submit the Entity Form as part of the Project Form (part 2) of the application. For Connect Illinois Round 4, you should submit *this Entity Form*.

This form requests materials that will be reviewed to determine if you are eligible for funding. Qualification materials are not used in scoring but must be submitted to meet Federal and State requirements.

Pre-Qualification Participants: If you participated in the BEAD Pre-Qualification process, please indicate if you have been approved, unless you wish to submit updated information. If you are not a Pre-Qualification Participant, please read the Participation Notice Letter ready, as certain questions may not apply to you.

Confidentiality Notice

All information submitted is subject to the Freedom of Information Act. If you have proprietary information, they may mark it "Confidential Information" to be presumptively exempt from disclosure. If denoted as confidential, the information provided is not to be shared with the Department, pursuant to any law, regulation, or legal requirement. Please provide respondent prompt notice so the applicant may seek legal advice.

Questions?

- Visit the [IOB website](#) for more information on BEAD.
- Reach out via email to broadband@illinois.gov

Administrative: Entity Information

This section requests basic identification information for your entity.

E.AD.1. Legal Entity Name * Please enter your legal entity name used in all company documents, including any filings with the FCC or the IRS.

E.AD.2. Doing Business As (DBA) Please enter the name that the legal entity is doing business as (DBA).

E.AD.3. Employer Identification Number (EIN) * Please enter the nine-digit Employer Identification Number (EIN). If you are a BEAD Pre-Qualification Participant, please enter the exact EIN that was used in the qualifications application process.

In the event you are applying as a multi-participant, please enter the EIN that was used for SAM registration or, if you do not have an EIN, please contact the Department for more information.

E.AD.4. Type of Entity * Select the relevant type that best describes your entity.

- ☐ Private/For-Profit Company or Organization
- ☐ Public-Private Partnership
- ☐ Public Utility, Private Utility, or Public Agency
- ☐ Cooperative
- ☐ Municipality or political subdivision
- ☐ Non-Profit Organization
- ☐ Tribal Government
- ☐ Consortium
- ☐ Other

E.AD.4.E. Anti-collusion: Certification * Do you certify that you and any representative have not participated in the BEAD program within the last 12 months?

Part B: Managerial Capabilities

This section requests information about your entity to demonstrate compliance with BEAD requirements on managerial capabilities for subgrantees deploying network facilities (BEAD NOFO, pages 73-74).

E.B1. Résumés: Documentation * Provide 5-7 résumés for essential financial, technical, and managerial personnel who will support project implementation. Résumés should include educational experience, detailed descriptions of work history, and all relevant experience in undertaking projects of similar size and scope. (Permitted file types: PDF)

Drop files here or [browse](#)

E.B2.A. Organizational chart(s): Personnel Documentation * Provide a personnel organizational chart that includes all relevant personnel who will support project implementation. Names and titles should be clearly identified for all positions. (Permitted file types: PDF, XLSX, DOCX, JPEG, PNG)

Drop files here or [browse](#)

E.B2.B. Organizational chart(s): Entity Structure Documentation * Provide company structure organizational chart(s) detailing all parent companies, subsidiaries, and affiliates. If relevant, prospective subgrantees should also provide a narrative on upcoming organizational changes, including mergers, acquisitions, and organizational policies. (Permitted file types: PDF, XLSX, DOCX, JPEG, PNG)

Drop files here or [browse](#)

E.B3. Managerial Readiness: Narrative * Provide a narrative of managerial readiness to manage a broadband services network. This narrative should describe the experience and qualifications of key management for undertaking this project, its experience undertaking projects of similar size and scope, recent and upcoming organizational changes including mergers and acquisitions, and relevant organizational policies. (2100 character limit, approx. 300 words)

2 Project form



Connect Illinois Round 4 Project Form

Project Form (Part 2)

This application form is part 2 of the submission process for the project that the Entity Form has been completed for the BEAD-funded project. Before proceeding, please also review the BEAD-funded Connect Illinois Round 4 Instructions.

The Project Form requests materials to demonstrate that the applicant meets the Merit Review Scoring Process.

- This form begins with all qualification materials (all sections) for the application to be considered for BEAD funding per the Merit Review Scoring Process (see below).
- Section S contains all additional information not collected as part of the Merit Review Scoring Process. Information regarding the scoring criteria is located in [Proposal Volume II](#).

Applicants must submit this form for each project application they are submitting. This section provides a detailed explanation for each component of the form.

Confidentiality Notice

All information submitted is subject to the Freedom of Information Act. If you have proprietary information, they may mark it "Confidential Information" to be presumptively exempt from disclosure, pursuant to the Freedom of Information Act. If denoted as confidential, the information provided in the application will be held confidential by the Department, pursuant to any law, regulation, or legal process. The Department will provide prompt notice so the applicant may seek a protective order.

Questions?

- Visit the [JOB website](#) for more information on BEAD.
- Reach out via email to broadband@illinois.gov

Part A: Project Overview and Locations Impacted

This section of the application requests an overview of the project and locations impacted by the proposed broadband project.

PA1. Project Overview: Narrative

Please provide a high-level, introductory overview of the project. Please include a summary description of the project scope (e.g., geographic area, count of BSLs/CALs to be served, technology); project budget, funds requested, and match provided; estimated time needed for start of deployment activities; and estimated time for deployment completion. Please be advised that this narrative may be publicly used in announcements following any awards made, if applicable. (3500 character limit, approx. 500 words)

PA2. Project Area Selection Sheet: Template

Please upload BOTH of the following files:

- The Project Area Selection Sheet from the [BEAD Project Area Selection Sheet](#) tab of the Round 4 – Instructions* tab of the application.
- The original, unaltered Project Area Selection Sheet template above.

Please ensure the files are named: [PROJECT NAME]_ProjectAreaExport.csv. For example, if the project was named "12-3456789-03_Project Area Selection", the file should be named "12-3456789-03_ProjectAreaExport.csv". (Permitted file types: XLSX, CSV)

PA2.A. Locations that are Not Unserved, Underserved, or Eligible CALs

Please indicate whether the project locations are not unserved, underserved, or eligible CALs.

☐ Yes ☒ No

PA3. Notifying New Customers: Narrative

Provide a description of how you plan to notify new customers of the project. This should be designed in a language that is likely to encounter the applicant. Per BEAD requirements, to increase their service areas that are designed to be served by the project.

Part B: Technical Project-Based Qualifications

This section of the application focuses on the technical design aspects of the proposed broadband project. Applicants must provide a project design and other supporting materials demonstrating the capability to provide broadband service meeting or exceeding the BEAD program requirements. The project design materials must be certified by a currently licensed professional engineer. The project design materials must include the components listed below.

PB1. Detailed Project Schedule: Template

Please provide a detailed project implementation schedule, including buildout timeline and milestones, using the [template](#) provided. This document must be accompanied by a certification from a Professional Engineer. Please name the file using the following naming convention: "[PROJECT NAME]_Project Schedule.xlsx". For example, if the project was named in P.AD.1 as 12-3456789-03, it should be named "12-3456789-03_Project Schedule.xlsx". (Permitted file types: XLSX)

PB2. Network Design and Technical Narrative

Please provide a technical narrative and network design that support the proposed design. Both documents must be accompanied by a certification from a Professional Engineer. Detailed instructions on information required are included in the Application Guidebook. (Permitted file types: Shapefile [.shp, .shx, .dbf], .kml, .kmz, .zip, .tar, PDF)

PB2.A Network Design – Conduit Access: Narrative

If your project involves laying fiber-optic cables or conduit underground or along a roadway, please provide a narrative describing how you plan to comply with BEAD requirements to include interspersed conduit access points at regular and short intervals for interconnection by unaffiliated entities. Per the BEAD NOFO, any Funded Network deployment project that involves laying fiber-optic cables or conduit underground or along a roadway must include interspersed conduit access points at regular and short intervals for interconnection by unaffiliated entities. Where a project proposes to lay conduit, prospective subgrantees must propose to deploy a reasonable amount of excess conduit capacity and propose a conduit access point interval as part of the grant application process, and the State will consider the adequacy of the prospective subgrantee's proposed excess conduit capacity and access points when evaluating the application. If your proposed project does not involve laying fiber-optic cables or conduit underground or along a roadway, please write "Not applicable". (3500 character limit, approx. 500 words)

3 Application Submission form

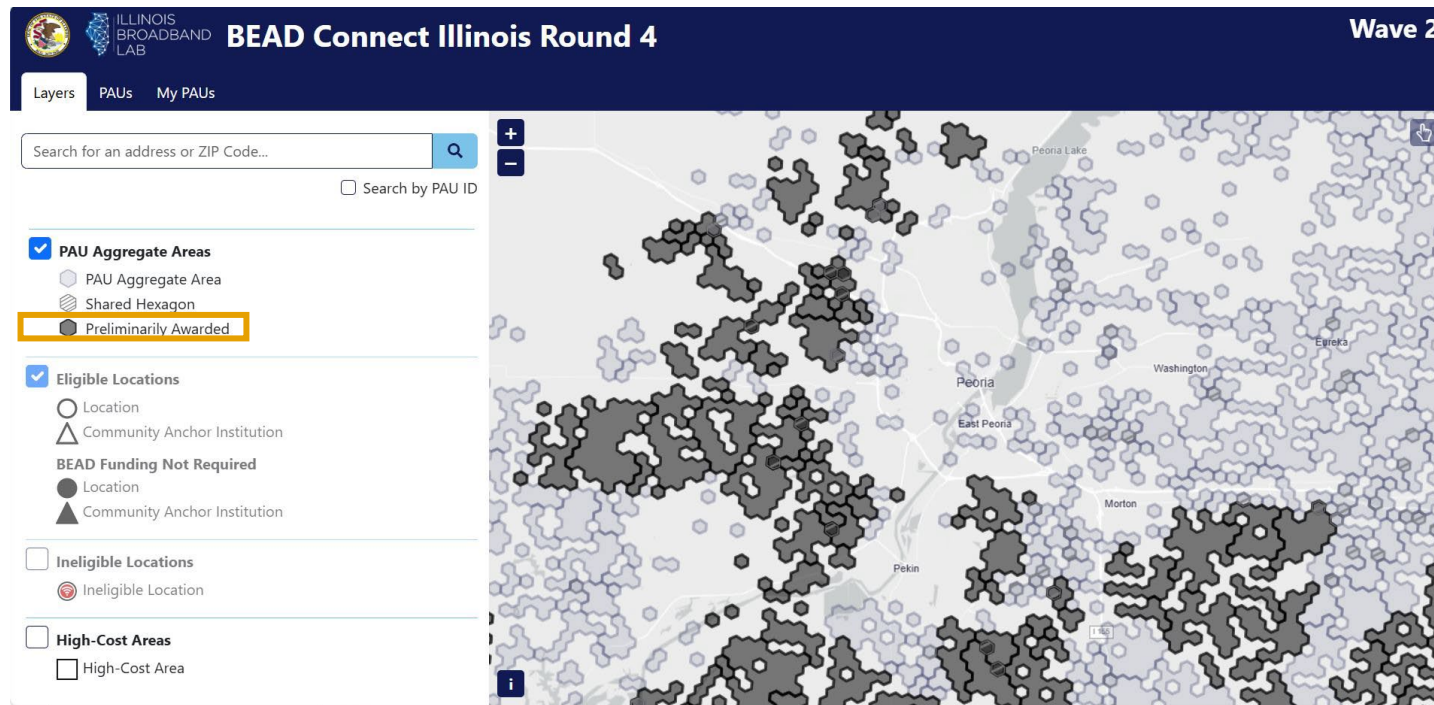


Project Area Selection Tool: updates & recap (1/2)

<https://bead.connectednation.org/illinois/>

As of May 27, 2025, the Project Area Selection Tool has been updated with the following:

1. PAUs preliminarily selected in Wave 1 are no longer available in Wave 2, and cannot be selected on the mapping tool

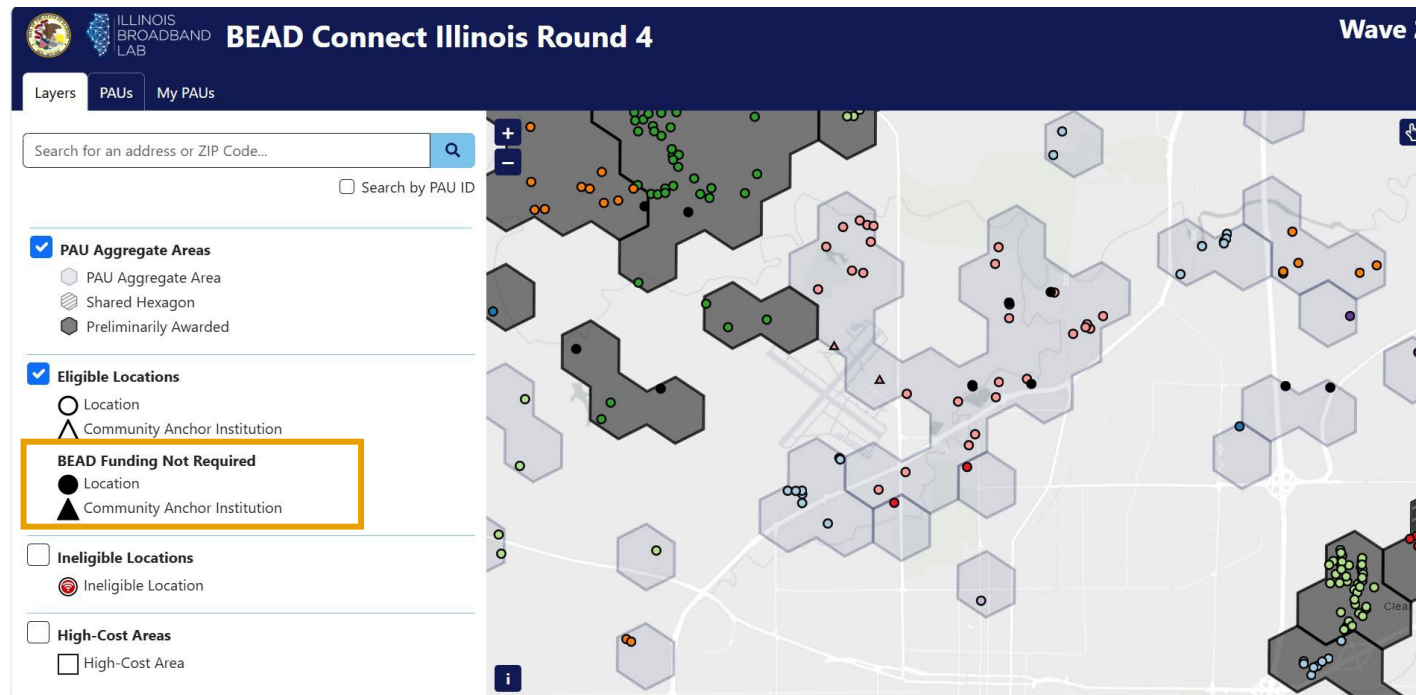


Project Area Selection Tool: updates & recap (2/2)

<https://bead.connectednation.org/illinois/>

As of May 27, 2025, the Project Area Selection Tool has been updated with the following:

2. Map has new symbology for locations not requiring BEAD funds due to sufficient evidence of existing service, based on serviceability updates process



Some qualifications will be evaluated using a standard template that applicants must complete

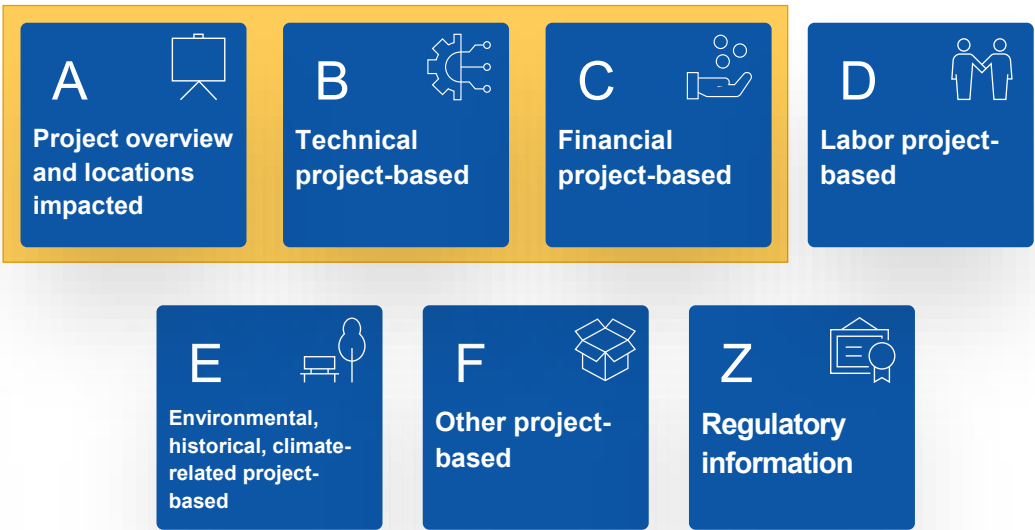
- Qualification includes template
- Qualifications included in pre-qualification phase
- Qualifications not included in pre-qualification phase

Entity application qualifications



Qualifications approved during the pre-qualification process generally do not need to be resubmitted, but the State reserves the right to re-assess the qualifications, capabilities, and resources of all prospective subgrantees

Project application qualifications



Regardless of pre-qualification status, all applicants must submit project-based qualification materials

In-depth guidance can be found in the [Application Guidebook](#)

Overview of documents and templates



Submission always required



Submission conditionally required



Submission not required for application

Overview of documents pertaining to BEAD-Funded Connect Illinois Round 4

	Document and applicable question index	Document required for application?	Document type
Entity Submission Form	Ⓕ E.F1.A. Ownership Information Template	✓	Template
	Ⓖ E.G3/G4. Existing Broadband Projects Template	⊖ (For applicants with other public projects)	Template
	Ⓘ E.I1. Mandatory Disclosure Form	✓	Form
	E.I2. Conflict of Interest Disclosure Form	✓	Form
	E.I3. W-9 Form	✓	Form
Project Submission Form	Ⓐ P.A2. Project Area Selection Sheet Template	✓	Template
	Ⓑ P.B1. Project Timeline Template	✓	Template
	P.B2.B Fixed Wireless Access (FWA) Design Template	⊖ (For proposed FWA projects)	Template
	P.B3. Example Logical Network Diagram	✓ (Network Diagram is required)	Example document
	P.B4. Project Cost & Capital Investment Schedule	✓	Template
	P.B5. Professional Engineer Certification Template	✓	Template
	Ⓒ P.C1. Pro Forma Template	✓	Template
	P.C2. Model Letter of Credit	⊖ (Required if awarded)	Example document
	Ⓓ P.Z1. Uniform Grant Application Form	✓	Form

Definitions:

Templates require applicants to input specific project-related information in a State-defined format

Forms require applicants to submit standard information and/or disclosures required by the State

Example documents demonstrate information that applicants must provide

Overview: BEAD-Funded Connect Illinois Round 4 scoring rubric

	Criteria	How it will be applied	Score, %
Primary ¹	Minimal BEAD Program outlay: non-state match	More points will be assigned to the degree of nonstate match over 30%, as a greater nonstate match signifies more “skin in the game” and therefore financial risk assumed by the applicant	20%
	Minimal BEAD Program outlay: financial need with respect to reference cost	Points will be assigned based on how much the application’s required BEAD outlay deviates from the reference cost published by the state. More points will be assigned to applications with lower BEAD outlay compared to the reference cost	30%
	Affordability	Applicants will be scored based on the price they offer for either 1Gbps/1Gbps or 100/20Mbps: 1Gbps/1Gbps for Priority Broadband Projects and 100/20Mbps for other broadband projects	15%
	Fair Labor Practices	Applicants will be scored based on their demonstrated record of and plans to be in compliance with federal labor and employment laws, and submission of a project labor agreement	15%
			80%
Secondary/ additional ²	Speed to deployment	Points will be assigned for enforceable deployment plans faster than 48 months	3%
	Speed of Network & Technical Capabilities	Points will be assigned based on performance levels and scalability of networks	4%
	Open Access	Points will be assigned based on subgrantee’s provision of open access	3%
	Local Coordination	Points will be assigned based on the breadth and depth of community support for the project (5%) and financial investment by community members and organizations (5%)	10%
			20%
Total			100%

1. That is: BEAD-stipulated criteria that must collectively account for no less than 75% of total points

2. That is: Other BEAD-stipulated criteria (Speed to Deployment, Speed of Network and Technical Capability), and additional criteria (Open Access, Local Coordination) that are not required but encouraged per the BEAD NOFO

Local Coordination represents 10% of the total points an applicant can earn in BEAD-Funded CI Round 4

1. Local Coordination:
Evidence of Community Support

5%
Scoring weight

Points will be awarded based on the breadth and depth of community support for the project. The State’s evaluation of the evidence of community support will be similar to its evaluation in Connect Illinois, Round 3.

Examples of supporting evidence

A

Degree of personalized and specific letters that reflect a broad spectrum of community members

B

Degree to which the project fits into an existing community strategic plan or commitments from community

C

Recent survey that covers a broad spectrum of the community, with meaningful results regarding level of need, gaps, and project support

D

Evidence of community outreach efforts to gauge interest in the project

E

Other community feedback or evidence of community engagement/collaboration that shows compelling need and support for the project

2. Local Coordination: *Verified Financial Commitment from Community*

5%
Scoring weight

Points will be awarded based on financial investment by community members and organizations. The state’s evaluation of verified financial commitment from communities will be similar to its evaluation in Connect Illinois, Round 3.

Examples of supporting evidence

A

The degree of financial contribution from community-based members and institutions

B

In-kind resource commitments from community-based members and institutions

C

Evidence to support verification of pledge

Resource for both 1) prospective BEAD applicants and 2) communities considering offering support: [Local Coordination Guidance Document Link](#)

UPDATED

Application Guidebook

The BEAD-funded Connect Illinois Round 4 Application Guidebook provides details about the application process, all application questions, templates, and instructions to complete the three required forms [\[Link\]](#)

BEAD-Funded Connect Illinois Round 4 Application Guidebook

Version 2 - Published May 16, 2025

Table of Contents

I	Introduction	4
I.1	Program Introduction	4
I.2	Details on Review and Selection Process	5
I.3	Scoring Criteria	8
II	Overview of the Application Process for BEAD-funded Connect Illinois Round 4	13
II.1	Methodology and Structure	
II.2	Application Submission Flow	
II.3	Relevant Terminology	
II.4	Pre-Qualification Participants	
II.5	Application Platform and Response Types	
II.6	Confidentiality	
III	Entity Form (Part 1)	
III.1	Administrative: Entity Information	
III.2	Administrative: Contact Information	
III.3	Administrative: Prior Connect Illinois Round	
III.4	Administrative: Pre-Qualifications Process	
III.5	Part A: Financial Capabilities	
III.6	Part B: Managerial Capabilities	
III.7	Part C: Technical Capabilities	
III.8	Part D: Compliance with Law	
III.9	Part E: Operational Capabilities	
III.10	Part F: Ownership Capabilities	
III.11	Part G: Other Public Funding	
III.12	Part H: Risk Management	
III.13	Part I: Regulatory Information	
III.14	Next Steps after Submission	
IV	Project Form (Part 2)	
IV.1	Administrative: Project and Associated Ent	
IV.2	Administrative: Submission Type	

III.6 Part B: Managerial Capabilities

This section requests information about your entity to demonstrate compliance with BEAD requirements on managerial capabilities for subgrantees deploying network facilities (BEAD NOFO, pages 73-74).

E.B1. Résumés: Documentation Response Type: Document Upload (Permitted file types: PDF)

Provide 5-7 résumés for essential financial, technical, and managerial personnel who will support project implementation. Résumés should include educational experience, detailed descriptions of work history, and all relevant experience in undertaking projects of similar size and scope.

E.B2.A. Organizational chart(s): Personnel Documentation Response Type: Document Upload (Permitted file types: PDF, XLSX, DOCX, JPEG, PNG)

Provide a personnel organizational chart that includes all relevant personnel who will support project implementation. Names and titles should be clearly identified for all positions.

E.B2.B. Organizational chart(s): Entity Structure Documentation Response Type: Document Upload (Permitted file types: PDF, XLSX, DOCX, JPEG, PNG)

Provide company structure organizational chart(s) detailing all parent companies, subsidiaries, and affiliates.

If relevant, prospective subgrantees should also provide a narrative on upcoming organizational changes, including mergers, acquisitions, and organizational policies.

E.B3. Managerial Readiness: Narrative Response Type: Narrative

Provide a narrative of managerial readiness to manage a broadband services network. This narrative should describe the experience and qualifications of key management for undertaking this project, its experience undertaking projects of similar size and scope, recent and upcoming organizational changes including mergers and acquisitions, and relevant organizational policies.

Updates to Application Guidebook/Templates

Updates to App Guidebook Version 2 (May 16, 2025), from Version 1 (Jan 6, 2025)

- Naming convention provided for all uploads
- Reminder added to use standard templates and provide all information requested
- Text and descriptions updated for 4-5 questions to clarify instructions and add explanations
- New questions added for applicants to directly input fiber mileages (P.B2) as well as pole replacement costs (P.B4)

Full list of guidebook changes available in
Application Guidebook Appendix 6

Updates to templates for Wave 2

- **Pro Forma:** Use of template now mandatory; template updated to include served locations passed
- **Project Area Selection Template:** Updated to reflect multiple technology types in Wave 2
- **Project Schedule Template:** Updated to show both (i) end-to-end project timeline starting from grant agreement, and (ii) actual activity timeline in case of delayed project start from agreement execution
- **Professional Engineer (PE) Certification:** Updated to reflect fiber miles
- **Project Cost Template:** Description now includes reminder that costs must be provided at unit level

Please download the latest templates using the links in the App Guidebook or Submission Forms (do not use a previously downloaded version from Wave 1, as it may have changed)

Notice of Funding Opportunity (NOFO)

Formal grant opportunity posting
[\[Link\]](#)

Agency-specific Content for the Notice of Funding Opportunity Connect Illinois Broadband Program NOFO ID: 3504-2942

For information about grants please visit <https://dceo.illinois.gov/aboutdceo/grantopportunities/granteeresources.html>.

A. Program Description

Notice of Funding Opportunity Intent

The Illinois Department of Commerce and Economic Opportunity (the "State" or "DCEO") is issuing this Notice of Funding Opportunity ("NOFO") to set forth the requirements for the BEAD-Funded Connect Illinois Round 4.

Program Description

BEAD-Funded Connect Illinois Round 4 utilizes federal funds from the U.S. Department of Commerce's National Telecommunications and Information Administration (NTIA) through the Broadband Equity, Access, and Deployment (BEAD) Program, which was authorized by the Infrastructure Investment and Jobs Act of 2021, Division F, Title I, Section 60102, Public Law 117-58, 135 Stat. 429 (November 15, 2021) (Infrastructure Act or Act), also known as the Bipartisan Infrastructure Law.

BEAD-Funded Connect Illinois Round 4 deploys broadband service to unserved and underserved locations. In accordance with the BEAD Program, this program prioritizes projects that provide fiber connectivity directly to the end-user while considering projects that use other technologies to ensure universal coverage.¹

Definitions. The following terms are defined accordingly for the purposes of this NOFO and the BEAD-Funded Connect Illinois Round 4:

"Assistant Secretary" refers to the Assistant Secretary of Commerce for Communications and Information or the individual who holds any successor position.²

"Alternative technology" means any technology that does not qualify as Reliable Broadband Service, including Unlicensed Fixed Wireless (ULFW) and low-Earth orbit satellite (LEO), that meets the BEAD Program's minimum technical requirements of speeds not less than 100 Mbps for downloads and 20 Mbps for uploads and latency less than or equal to 100 milliseconds.³

"BEAD" means the Broadband Equity, Access, and Deployment Program, authorized by the Infrastructure Investment and Jobs Act of 2021, Division F, Title I, Section 60102, Public Law 117-58, 135 Stat. 429 (November 15, 2021) (Infrastructure Act or Act), also known as the

Tips & Reminders

- ✓ Airtable form does not save progress – be sure to submit in one session to avoid losing your work
- ✓ Do not wait until the last few hours to submit. DCEO will not accept submissions after 5 pm CT regardless of the reason
- ✓ Use standard templates, and provide all the information required while submitting materials
- ✓ Follow the file naming convention for any document/template uploads
 - For entity form, use "[EIN from E.AD.3] [Document name] [Date submitted, in Month Day format]"
 - For project form, use "[Project Name from P.AD1] [Document or Template name] [Date submitted, in Month Day format]". For example, if the project was named in P.AD.1 as 12-3456789-03, for P.B1 (Project Schedule) the file should be named *"12-3456789-03 Project Schedule May 19.xlsx"*
- ✓ While all awards at this time are preliminary and the state cannot disclose identifying information about preliminary awardees, applicants may opt to communicate with organized labor and local stakeholders about their projects to develop Project Labor Agreements and collect evidence of local coordination
 - During this communication, please ensure that stakeholders are aware of the **preliminary** status of the selection, and that it is subject to change

Upcoming Webinars & Office Hours

Webinars:

Tuesday June 3
12-1 pm CT

Wave 2 Templates Webinar Part 1

Wednesday June 4
12-1 pm CT

Wave 2 Templates Webinar Part 2

Register here: <https://registration.extension.illinois.edu/start/connect-illinois-bead>

Office Hours:

- Tuesdays & Thursdays, 1-2 pm CT on Zoom ([Link to Join](#))

Illinois Jobs Board Update

Broadband Jobs Board Now Live!

The **Illinois Broadband Jobs Board** brings together broadband-related training programs and job opportunities from across Illinois to tackle an anticipated broadband workforce gap



**Find a Job That Lets You
Connect to the Future**

- ✓ No University Degree Required
- ✓ High Earnings Potential
- ✓ Limitless Career Advancement



**Explore High Speed
Careers in Broadband
Deployment Here!**

<https://jobs.connectingtheheartland.com/>

 **Illinois**
Department of Commerce
& Economic Opportunity
OFFICE OF BROADBAND

 **HEARTLAND
FORWARD**
AN INSTITUTE FOR ECONOMIC RENEWAL

 **ILLINOIS
BROADBAND
LAB**

Post your jobs or training opportunities today



FOR EMPLOYEES & TRAINING PROVIDERS

Are you a training provider employer in the heartland?

Promote your training programs or showcase your company to connect with a growing skilled workforce in the heartland.

I'M A TRAINING PROVIDER



I'M AN EMPLOYER



FILL OUT THIS FORM TO PROMOTE OPEN JOBS

FIRST NAME

LAST NAME

TITLE •

ORGANIZATION •

EMAIL ADDRESS •

ZIP CODE •

PHONE

ORGANIZATION WEBSITE

Additional Resources & Helpful Links

Connect Illinois Round 4 NOFO: [\[Link\]](#)

Connect Illinois Round 4 App Guidebook: [\[Link\]](#)

BEAD Landing Page: [\[Link\]](#)

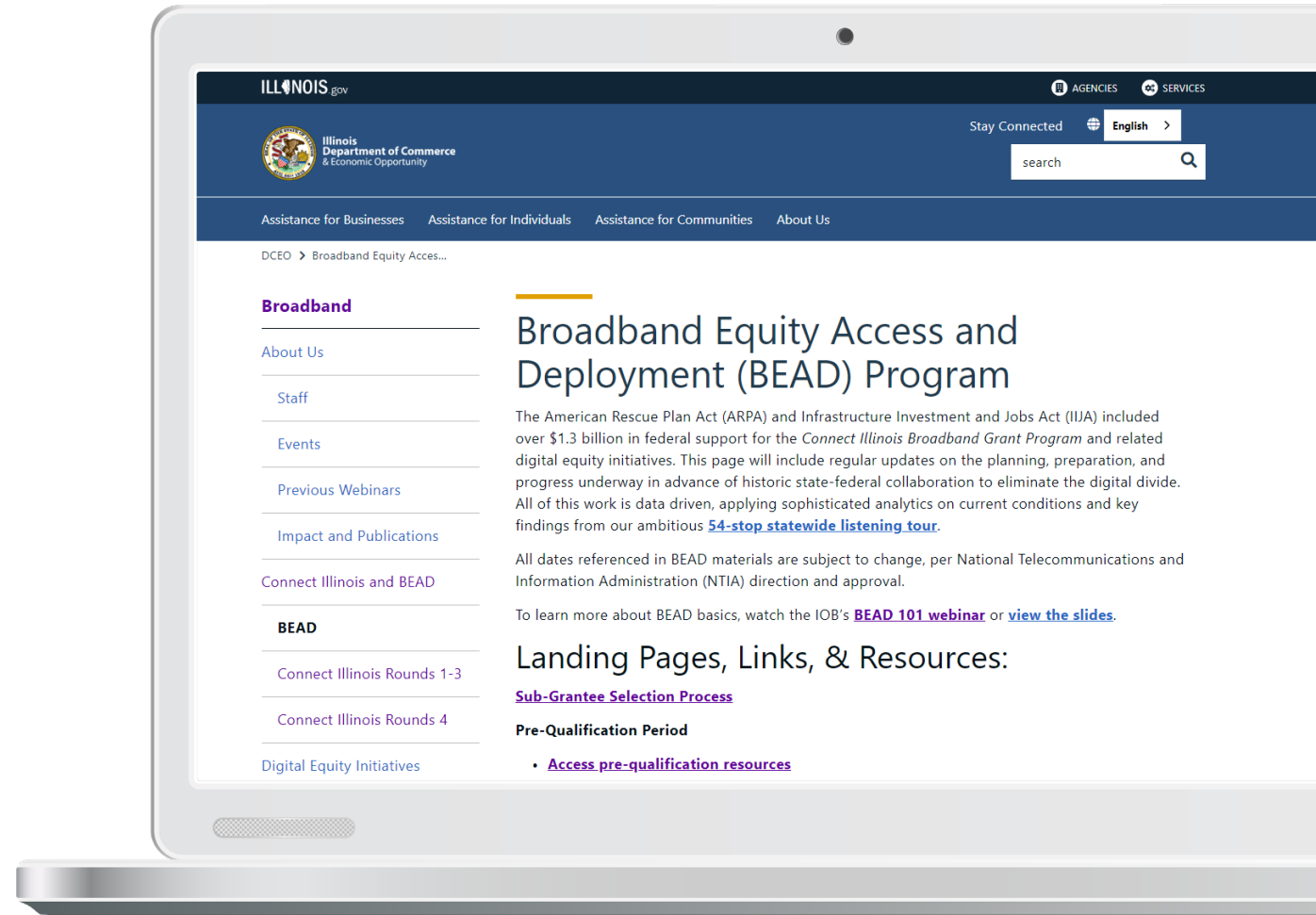
BEAD Subgrantee Selection Process Page: [\[Link\]](#)

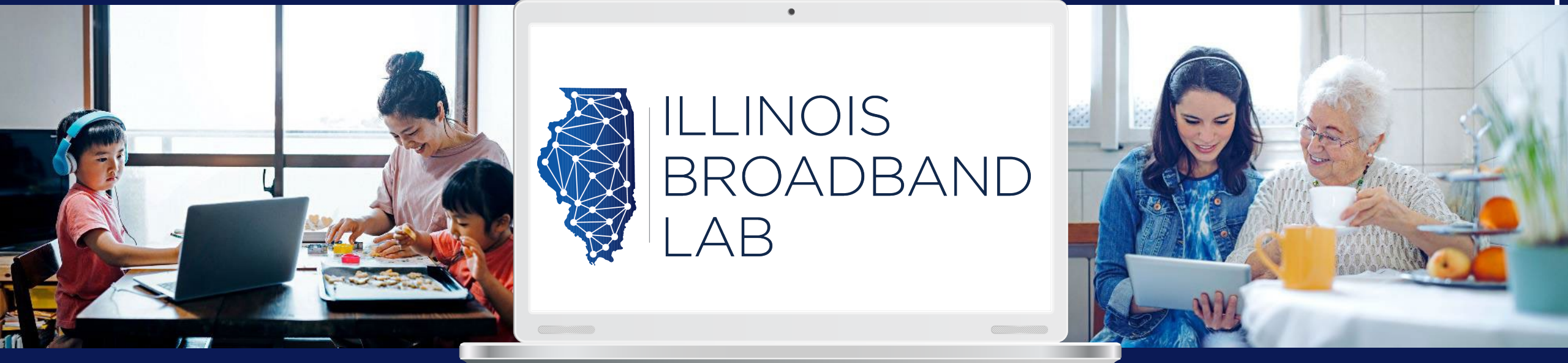
- Includes materials from BEAD Deep Dive Webinar Series and FAQs

Connect Illinois Initial Proposal, Volume II: [\[Link\]](#)



For further questions, please email broadband@illinois.gov





Stay informed!

**Sign up to receive updates from the
Illinois Office of Broadband (IOB)**

<https://bit.ly/IOBPartner>

Sign up for Illinois Broadband Connections Newsletter

<https://bit.ly/IOBnewsletter>

Appendix: Project Selection Tool demo

Project Area Selection Tool: Overview

<https://bead.connectednation.org/illinois/>

BEAD Connect Illinois Round 4 **Wave 2**

Layers | PAUs | My PAUs

Search for an address or ZIP Code...

☐ Search by PAU ID

☒ **PAU Aggregate Areas**

- ☐ PAU Aggregate Area
- ☐ Shared Hexagon
- ☐ Preliminarily Awarded

☒ **Eligible Locations**

- ☐ Location
- ☐ Community Anchor Institution

BEAD Funding Not Required

- ☐ Location
- ☐ Community Anchor Institution

☐ **Ineligible Locations**

- ☐ Ineligible Location

PAU ID: 16_17099

Underserved: 44 **Unserved:** 12

Community Anchor Institution: 0

BEAD Funding Not Required: 2

Total: 58

Reference Cost: \$1,013,761.94

Add to My PAUs

Use the menu options to toggle layers, view a list of PAUs as you explore the map, and see summary statistics for selected PAUs

Use the lasso tool to select more than one PAU or to lasso a group of PAUs

Click "Add to My PAUs" to add them to a project area

Click on a location or a hexagon where a location falls to view information about a PAU

Project Area Selection Tool: Menu options

<https://bead.connectednation.org/illinois/>

On the Layers tab, click on the check boxes to toggle on or off layers to view different elements of the map or use the search bar to search for a location

LayersPAUsMy PAUs

Search for an address or ZIP Code...

Search by PAU ID

PAU Aggregate Areas

PAU Aggregate Area

Shared Hexagon

Preliminarily Awarded

Eligible Locations

Location

Community Anchor Institution

BEAD Funding Not Required

Location

Community Anchor Institution

Ineligible Locations

Ineligible Location

On the PAUs tab, view a list of PAUs on the lefthand panel as you explore the map

LayersPAUsMy PAUs

Search for an address or ZIP Code...

Search by PAU ID

PAU ID: nov_2237

Underserved: 0 Underserved: 5

Community Anchor Institution: 0

BEAD Funding Not Required: 0 Total: 5

Reference Cost: \$5,000.00

Add to My PAUs

PAU ID: nov_717

Underserved: 0 Underserved: 4

Community Anchor Institution: 0

BEAD Funding Not Required: 0 Total: 4

Reference Cost: \$30,056.69

Add to My PAUs

On the My PAUs tab, view summary statistics about selected PAUs, including:

- Count of PAUs
- Total Reference Cost
- Breakdown of location classifications

LayersPAUsMy PAUs

Search for an address or ZIP Code...

Search by PAU ID

Summary Statistics

PAUs

Locations

Reference Cost

Total PAU Aggregate Areas: 2

PAU ID: 12_17063

Underserved: 24 Underserved: 5

Community Anchor Institution: 0

BEAD Funding Not Required: 2 Total: 31

Reference Cost: \$692,251.25

Remove from My PAUs

Project Area Selection Tool: Description of Tools

<https://bead.connectednation.org/illinois/>

Description of tools



Download and save PAUs as a CSV



Upload a saved CSV to continue where you left off



View PAUs at the location level in a table format



Delete all PAUs from “My PAUs”

Important Note: The tool will not autosave your work if you exit. Use the download feature to save and return to your work.

Next Steps

After finalizing your project area and saving the PAUs as a CSV, copy and paste into the Project Area Selection Tool Template as per the instructions in the form