



Illinois
Department of Commerce
& Economic Opportunity
OFFICE OF BROADBAND
JB Pritzker, Governor



UNIVERSITY OF ILLINOIS SYSTEM

Closing the Digital Divide in Illinois

BEAD Deep-Dive Webinar:

Connect Illinois Round 4 (Wave 2) Application Templates, Forms, & Example Documents

June 4, 2025

Topics for Discussion Today



Recap of BEAD and progress to date



Overview of Connect Illinois Round 4 Application Templates, Forms, & Example Documents



Deep dive on Connect Illinois Round 4 Application Templates – *Part 2*



Live demo of Connect Illinois Round 4 Application Templates – *Part 2*

1

Recap of BEAD and progress to date

BEAD is a \$42B federal grant program that aims to bring high-speed internet to all Americans

Note: NTIA has communicated that changes to the program are coming following a rigorous review by the U.S. Dept. of Commerce

\$42.45 billion

Funds provided for BEAD

The Broadband Equity, Access, and Deployment (BEAD) Program is a federal grant program that aims to get all Americans online by funding partnerships between states or territories, communities, and stakeholders to build infrastructure where high-speed internet is currently unavailable

Program highlights

Eligible entities

- All 50 States, District of Columbia, and Puerto Rico
- Other Territories: U.S. Virgin Islands, Guam, American Samoa, and the Commonwealth of the Northern Mariana Islands

Example eligible uses of funds

- Planning for the deployment of high-speed Internet, including conducting research, collecting data, outreach, and training
- Deploying or upgrading Internet in un/underserved areas
- Improving service to community anchor institutions
- Installing Internet and Wi-Fi in multi-unit residential buildings
- Workforce development, including Registered Apprenticeships and pre-apprenticeships, community college and/or vocational training for broadband-related occupations to support deployment, maintenance, and upgrades

What are the goals of BEAD?



The BEAD Program awarded Illinois \$1.04 billion to connect all unserved and underserved locations to broadband over the next 5 years



Ensure universal coverage across all un/underserved locations in the state, maximizing deployment of end-to-end fiber, and only using non-fiber where fiber costs are extremely high¹



Prioritize projects providing broadband access to unserved and underserved locations and community anchor institutions, Wi-Fi equipment for Multi-Dwelling Units (MDUs) then other digital equity and inclusion priorities²



Run subgrantee selection process within one year of approval of the Initial Proposal, and complete implementation within four years of receipt of funds³



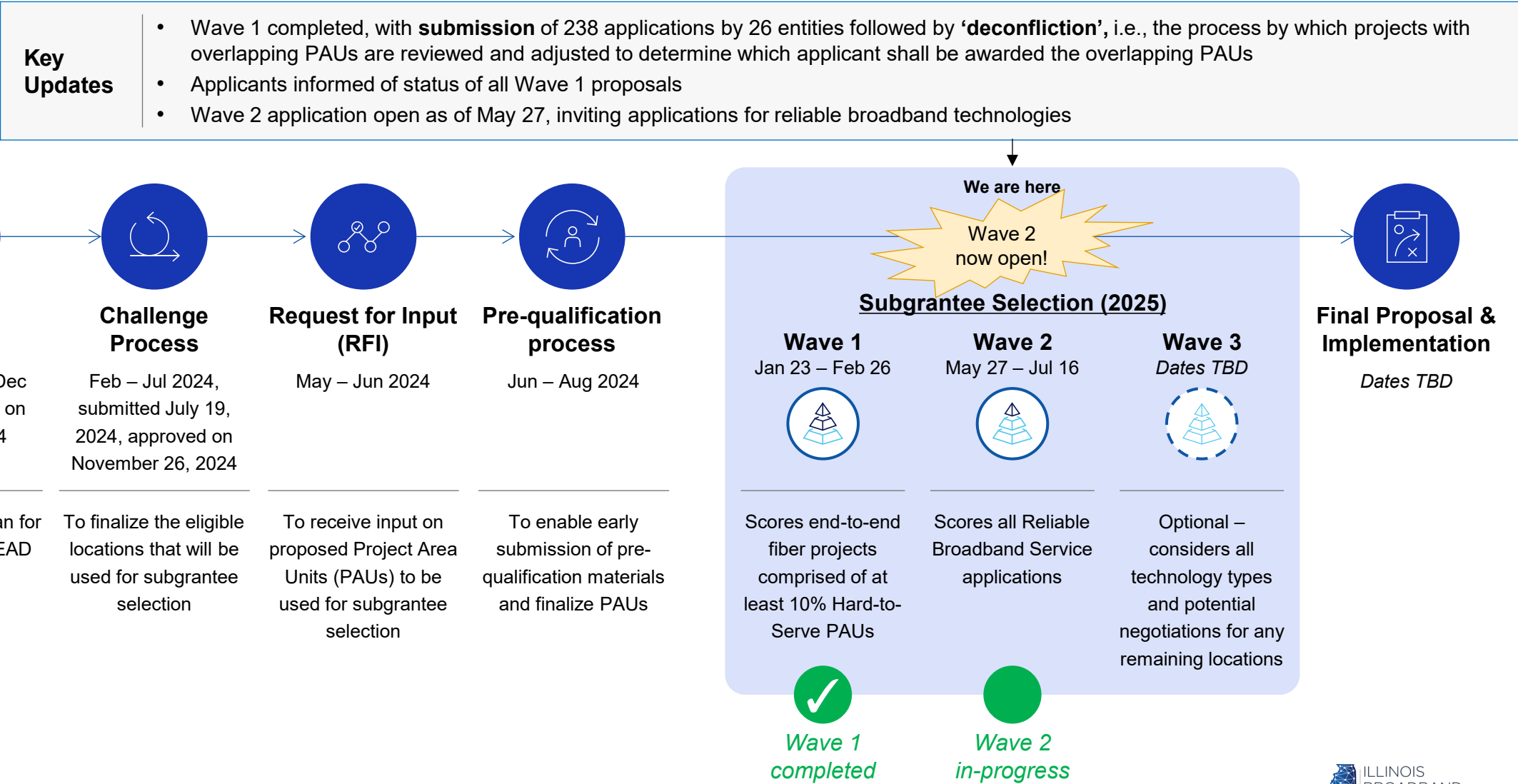
Focus on improving broadband affordability through a low-cost broadband service option, and a middle-class affordability plan⁴

1. Page 14 of BEAD NOFO, on the definition of Priority Broadband Project
2. Page 33 of BEAD NOFO, on the allocation of grant funds
3. Page 65 of BEAD NOFO, on deployment deadlines and benchmarks
4. Page 42-46 of BEAD NOFO, on inclusion of affordability in the BEAD scoring criteria

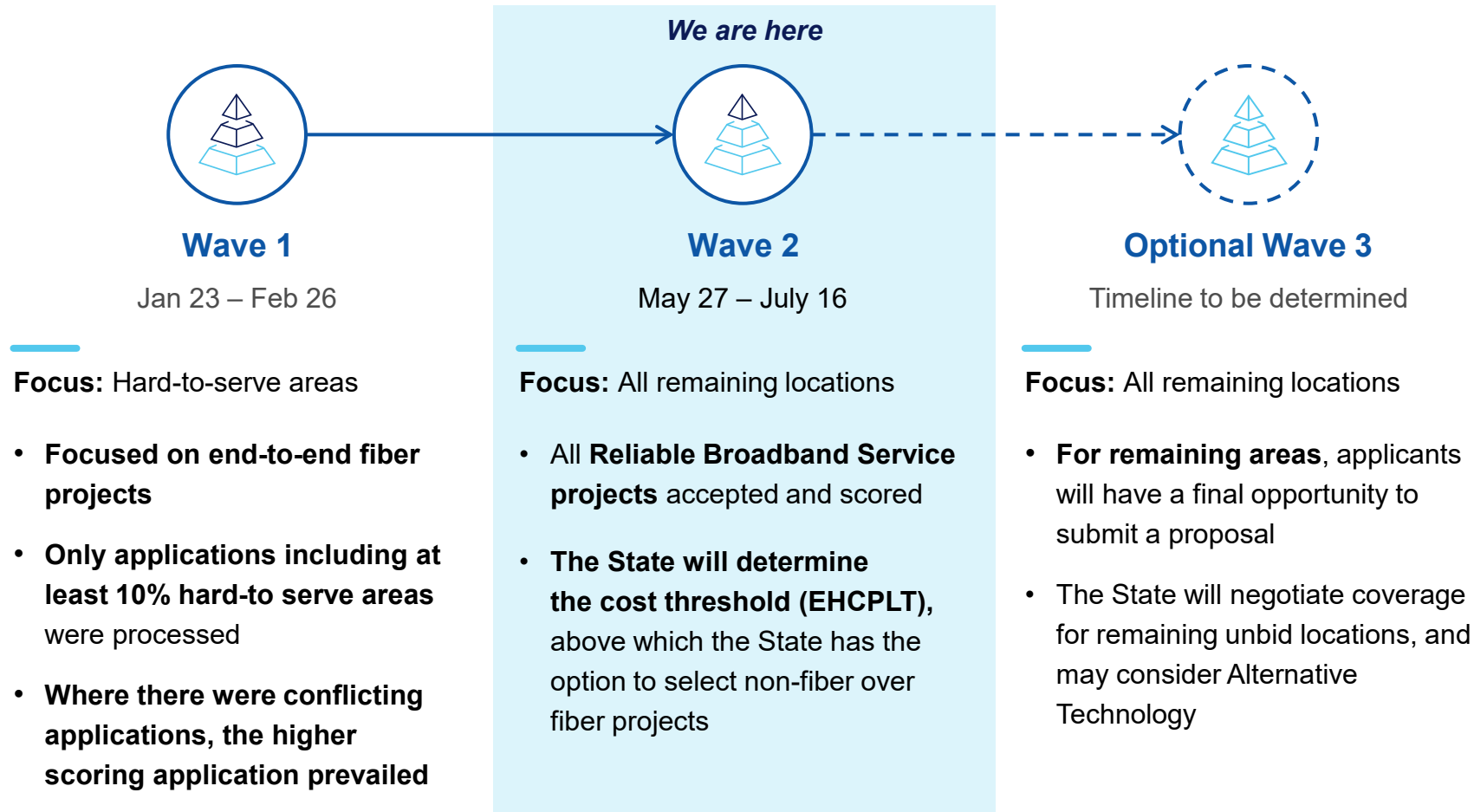
Source: [BEAD NOFO](#)

Overview of the BEAD-Funded Connect Illinois Round 4 timeline

PRELIMINARY TIMELINE - SUBJECT TO CHANGE INFORMATION PROVIDED ON AN INFORMATIONAL BASIS AND DOES NOT SUPERCEDE ORIGINAL DOCUMENTS



The subgrantee selection process consists of up to three waves – the first Wave is complete, and the second Wave opened on May 27



Note: Timeline is tentative based on currently available information and may change

Source: Connect Illinois Initial Proposal Volume II

What are PAUs?

Project Area Units (PAUs) are clusters of eligible locations no more than five miles apart

PAUs function as the “building blocks” of applications – applicants can apply to serve one or more PAUs, and PAUs cannot be separated

Detailed definitions follow

2

Connect Illinois Round 4 Application Templates, Forms, & Example Documents

Applicants must submit three forms to complete an application for BEAD-funded Connect Illinois Round 4



Entity Submission Form

Purpose

Ensures entities applying for Connect Illinois Round 4 **meet NTIA BEAD qualification requirements**

Example materials to submit

- Entity-specific qualifications
- IL Conflict of Interest disclosure
- IL Mandatory Disclosures
- W-9 form

Submission frequency

Once per entity, regardless of number of projects to be submitted
Note: Entities who **applied in Wave 1** do not need to resubmit entity forms

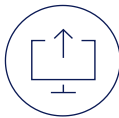


Project Submission Form

Ensures submitted **projects meet NTIA BEAD qualification requirements** and collects materials to be reviewed during the **Merit Review Scoring Process**

- Project-specific qualifications
- Project-specific scoring materials
- IL Project budget template
- IL Uniform Grant Application Form

Once per project



Application Submission Form

Serves as the **official submission of the application** to the State of Illinois, specifying the Entity / Project submissions to be reviewed by the State

- Entity Submission Form ID
- Project Submission Form ID

Once per project

1

Entity Submission Form



Connect Illinois Round 4 Entity Form

Entity Form (Part 1)

This application form is part 1 of the submission. Before proceeding, please review the BEAD-funded project. Please note, each entity should submit the Entity Form in the Project Form (part 2) of the application. Connect Illinois Round 4, you should submit *this* form. This form requests materials that will be reviewed. Qualification materials are not used in scoring but are used for State requirements.

Pre-Qualification Participants: If you participated in the BEAD Pre-Qualification process, please submit your Participation Notice Letter ready, as certain questions may be pre-qualified.

Please use standard templates wherever requested.

Naming standard for all document and template files:
Name all uploaded files using the following naming convention: *Entity Form (Part 1) - Evidence of Sufficient Funding May 19.xlsx*

Please do not include any special characters in the file names.

Confidentiality Notice

All information submitted is subject to the Freedom of Information Act. If you have proprietary information, they may mark it "Confidential" to be presumptively exempt from disclosure.

Administrative: Entity Information

This section requests basic identification information for your entity.

E.AD.1. Legal Entity Name *	Please enter your legal entity name used in all company documents, including any filings with the FCC or the IRS.
E.AD.2. Doing Business As (DBA)	Please enter the name that the legal entity is doing business as (DBA).
E.AD.3. Employer Identification Number (EIN) *	Please enter the nine-digit Employer Identification Number (EIN) used in the BEAD Pre-Qualification process, please enter the exact EIN may result in the qualifications approval application process. In the event you are applying as a multi-party agreement, please enter the EIN that was used for SAM registration or, if not, reporting to the State and ensuring that the multi-party agreement is approved. If you do not have an EIN, please contact the BEAD administrator.
E.AD.4. Type of Entity *	Select the relevant type that best describes your entity. <div><input type="radio"/> Private/For-Profit Company or Organization</div> <div><input type="radio"/> Public-Private Partnership</div> <div><input type="radio"/> Public Utility, Private Utility, or Public Utility</div> <div><input type="radio"/> Cooperative</div> <div><input type="radio"/> Municipality or political subdivision</div> <div><input type="radio"/> Non-Profit Organization</div> <div><input type="radio"/> Tribal Government</div> <div><input type="radio"/> Consortium</div> <div><input type="radio"/> Other</div>

Part B: Managerial Capabilities

This section requests information about your entity to demonstrate compliance with BEAD requirements on managerial capabilities for subgrantees deploying network facilities (BEAD NOFO, pages 73-74).


E.B1. Résumés: Documentation *	Provide 5-7 résumés for essential financial, technical, and managerial personnel who will support project implementation. Résumés should include educational experience, detailed descriptions of work history, and all relevant experience in undertaking projects of similar size and scope. (Permitted file types: PDF)
E.B2.A. Organizational chart(s): Personnel Documentation *	Provide a personnel organizational chart that includes all relevant personnel who will support project implementation. Names and titles should be clearly identified for all positions. (Permitted file types: PDF, XLSX, DOCX, JPEG, PNG)
E.B2.B. Organizational chart(s): Entity Structure Documentation *	Provide company structure organizational chart(s) detailing all parent companies, subsidiaries, and affiliates. If relevant, prospective subgrantees should also provide a narrative on upcoming organizational changes, including mergers, acquisitions, and organizational policies. (Permitted file types: PDF, XLSX, DOCX, JPEG, PNG)
E.B3. Managerial Readiness: Narrative *	Provide a narrative of managerial readiness to manage a broadband services network. This narrative should describe the experience and qualifications of key management for undertaking this project, its experience undertaking projects of similar size and scope, recent and upcoming organizational changes including mergers and acquisitions, and relevant organizational policies. (2100 character limit, approx. 300 words)

Project Submission Form

Source: Connect Illinois Round 4 Project Submission Form as of May 28, 2025

3

Application Submission form



3504-2942 BEAD-Funded Connect Illinois Round 4

The application form is the final form for an application to Connect Illinois Round 4 (the BEAD Program) to be considered complete. Failure to submit this form will prevent your application from being considered for Connect Illinois Round 4.

Before proceeding, you must have completed Part 1: Entity Form and Part 2: Project Form to submit the Application Form.

Questions? Contact broadband@illinois.gov.

Click [here](#) for more information and guidance on the BEAD application process.

☐ By checking this box I understand for my application to be considered, my entity must be GATA pre-qualified prior to application deadline. For more information on GATA pre-qualification, please visit <https://www2.illinois.gov/dceo/AboutDCEO/GrantOpportunities/Pages/GranteeResources.aspx>. *

Contact First Name *

Contact Last Name *

Contact Email Address *

Some qualifications will be evaluated using a standard template that applicants must complete

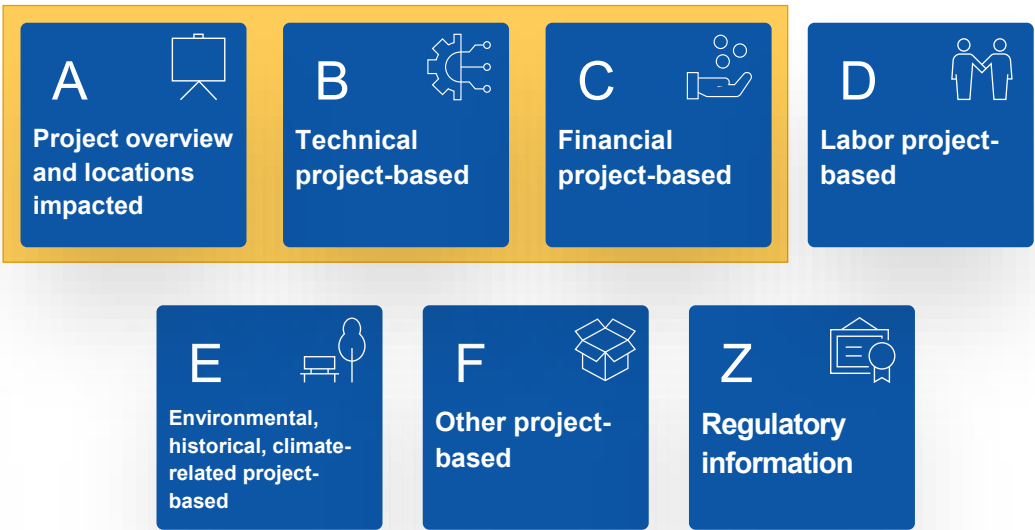
- Qualification includes template
- Qualifications included in pre-qualification phase
- Qualifications not included in pre-qualification phase

Entity application qualifications



Qualifications approved during the pre-qualification process generally do not need to be resubmitted, but the State reserves the right to re-assess the qualifications, capabilities, and resources of all prospective subgrantees

Project application qualifications



Regardless of pre-qualification status, **all applicants must submit project-based qualification materials**

In-depth guidance can be found in the [Application Guidebook](#)

Today, we'll walk through a few of these templates

Focus for today
✓ Submission always required
 ✕ Submission conditionally required
 ✕ Submission not required for application

Overview of documents pertaining to BEAD-Funded Connect Illinois Round 4

	Document and applicable question index	Document required for application?	Document type
Entity Submission Form	Ⓕ E.F1.A. Ownership Information Template	✓	Template
	Ⓖ E.G3/G4. Existing Broadband Projects Template	✕ (For applicants with other public projects)	Template
	Ⓘ E.I1. Mandatory Disclosure Form	✓	Form
	E.I2. Conflict of Interest Disclosure Form	✓	Form
	E.I3. W-9 Form	✓	Form
Project Submission Form	Ⓐ P.A2. Project Area Selection Sheet Template	✓	Template
	Ⓑ P.B1. Project Timeline Template	✓	Template
	P.B2.D Fixed Wireless Access (FWA) Design Template	✕ (For proposed FWA projects)	Template
	P.B3. Example Logical Network Diagram	✓ (Network Diagram is required)	Example document
	P.B4. Project Budget & Capital Investment Schedule	✓	Template
	P.B5. Professional Engineer Certification Template	✓	Template
	Ⓒ P.C1. Pro Forma Template	✓	Template
	P.C2. Model Letter of Credit	✕ (Required if awarded)	Example document
	Ⓓ P.Z1. Uniform Grant Application Form	✓	Form

Definitions:

Templates require applicants to input specific project-related information in a State-defined format

Forms require applicants to submit standard information and/or disclosures required by the State

Example documents demonstrate information that applicants must provide

3

Deep dive on Connect Illinois Round 4 Application Templates (Part 2)

P.B2.D. Fixed Wireless Access (FWA) Design Template

Requires PE certification?

☒ Yes

☐ No

Form: Project Submission Form

Section: B – Technical Project-Based Qualifications

Document required for application?:
Conditionally (*for proposed FWA projects*)

Overview:

- Includes **network design information for fixed wireless deployment**, to demonstrate that the proposed network meets technical qualifications outlined by the BEAD program

Live demo to follow

P.B4. Project Budget & Capital Investment Schedule Template

Requires PE certification?

☒ Yes☐ No

Form: Project Submission Form

Section: B – Technical Project-Based Qualifications

Document required for application?: Yes

- Overview:
- Includes **project budget** and a **capital investment schedule** per BEAD requirements
 - Captures project costs and justifications against State-defined categories, and breaks down requested grant funds at a granular level

Note: Cost information must be provided at unit-level granularity (e.g., “Material – 24”x26”x26” handhole” as opposed to “Material costs”)

Live demo to follow

P.C1. Pro Forma Template

Requires PE certification?

☐ Yes

☒ No

Form: Project Submission Form

Section: C – Financial Project-Based Qualifications

Document required for application?: Yes

Overview:

- Substantiates **financial sustainability** of the proposed project per BEAD requirements
- Sets up high-level financial analysis and cost / revenue estimates for proposed broadband networks, and allows applicants to demonstrate their need for a grant

Note: Use of the State's Pro Forma template is **mandatory** for Wave 2

Live demo to follow

Pro Forma Financials: Income Statement					
Forecast Year	1	2	3	4	5
Revenue					
Passings - BEAD funded					
Take Rate - BEAD funded					
Passings - Non-BEAD funded					
Take Rate - Non-BEAD funded					
Customers (All Passings)	-	-	-	-	-
Monthly Average Revenue Per User (ARPU)					
Subscriber Revenue	\$0	\$0	\$0	\$0	\$0
...					
...					
Other Revenue*					
Total Revenue	\$0	\$0	\$0	\$0	\$0
Expenses					
Recurring Operating Expenses [negative values]					
Maintenance & Network Ops	-	-	-	-	-
Backhaul Expenses (e.g., IP Transit, operating leases for middle-mile)	-	-	-	-	-
Customer Operations and Support Costs (CSRs, billing, admin, etc.)	-	-	-	-	-
Project Overhead	-	-	-	-	-
Marketing and Sales	-	-	-	-	-
...	-	-	-	-	-
...	-	-	-	-	-
...	-	-	-	-	-
...	-	-	-	-	-
...	-	-	-	-	-
...	-	-	-	-	-

4

Live Demo of Connect Illinois Round 4 Application Templates (Part 2)

**In today's session,
we will cover:**



P.B2.D. Fixed Wireless Access (FWA)
Design Template



P.B4. Project Budget & Capital
Investment Schedule Template



P.C1. Pro Forma Template

Additional Resources & Helpful Links

Connect Illinois Round 4 NOFO: [\[Link\]](#)

Connect Illinois Round 4 App Guidebook: [\[Link\]](#)

BEAD Landing Page: [\[Link\]](#)

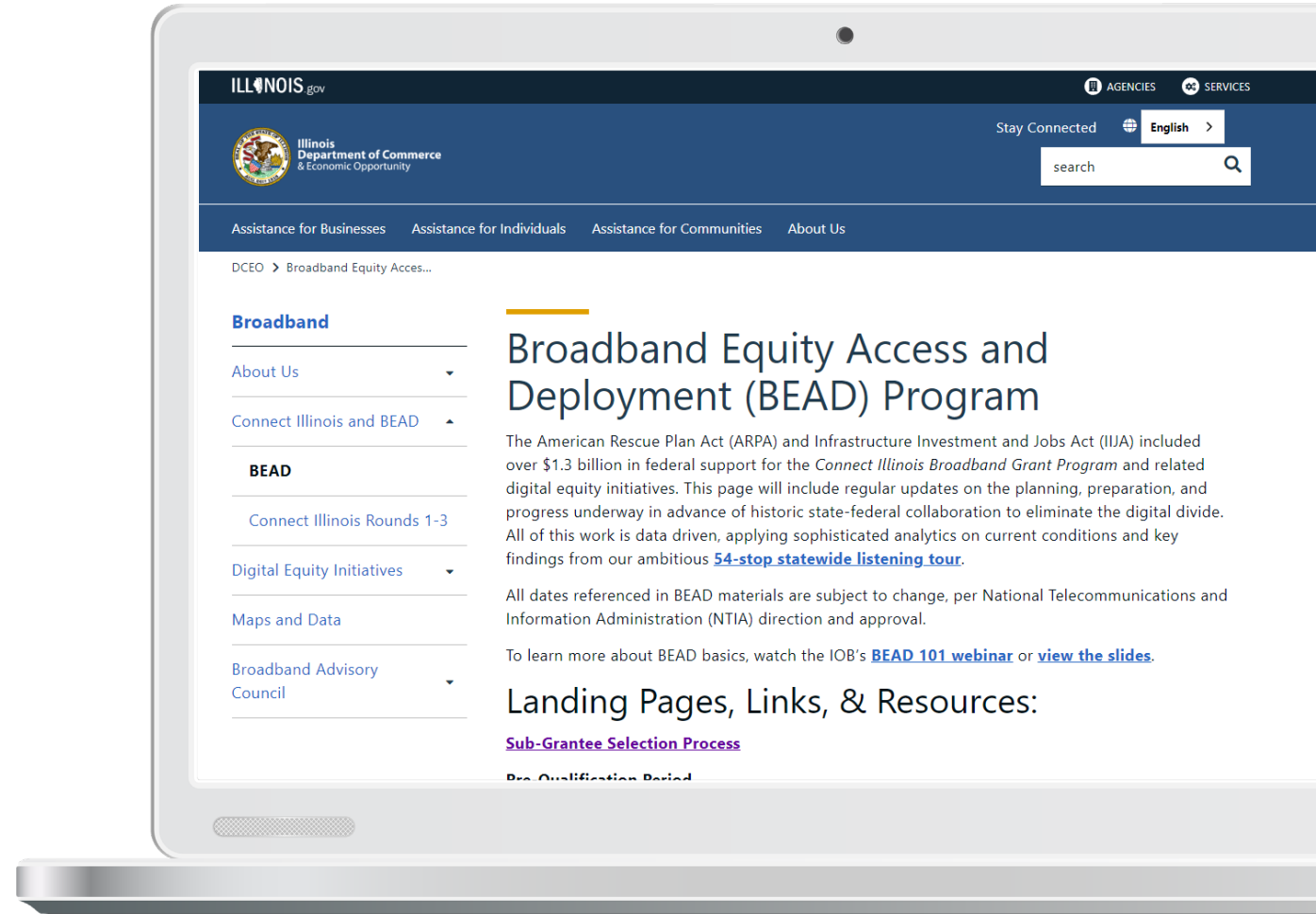
BEAD Subgrantee Selection Process Page: [\[Link\]](#)

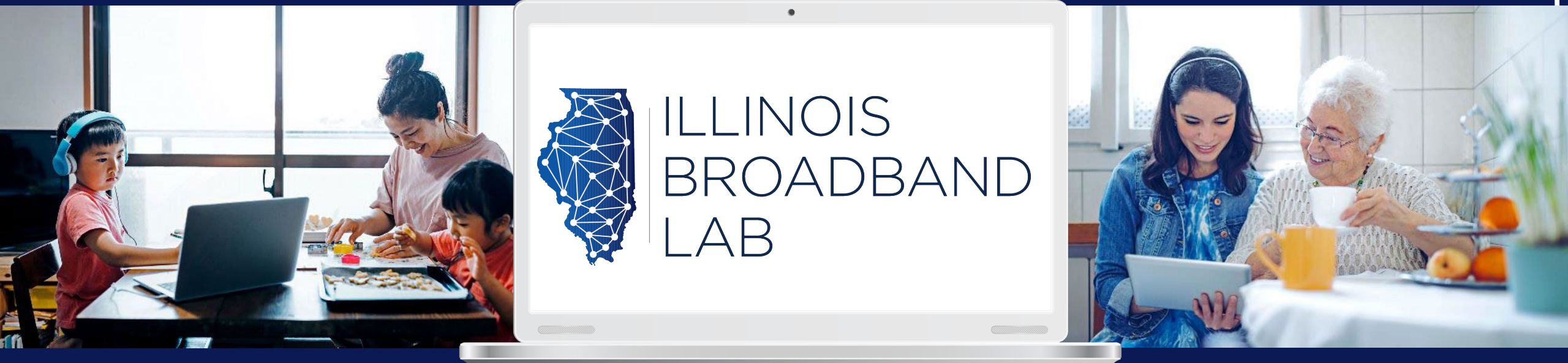
- Includes materials from BEAD Deep Dive Webinar Series and FAQs

Connect Illinois Initial Proposal, Volume II: [\[Link\]](#)



For further questions, please email broadband@illinois.gov





Stay informed!

**Sign up to receive updates from the
Illinois Office of Broadband (IOB)**

<https://bit.ly/IOBPartner>

Sign up for Illinois Broadband Connections Newsletter

<https://bit.ly/IOBnewsletter>

Before we discuss further, let's define a few concepts and terms

Project Area Unit (PAU)

A collection of un/underserved Broadband Serviceable Locations (BSLs) and Community Anchor Institutions (CAIs) eligible for an application



PAUs do not overlap and collectively contain all un/underserved locations and eligible CAIs in the State

If awarded a PAU, a subgrantee must deploy to all included eligible locations

Broadband Serviceable Location (BSL)

A business or residential location at which fixed broadband access is, or can be, installed, where:

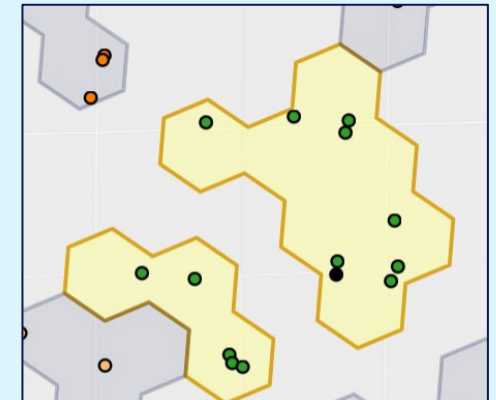
- **Unserved:** Has access to broadband service with speeds of <25/3Mbps
- **Underserved:** $\geq 25/3$ and <100/20Mbps
- **Served:** $\geq 100/20$ Mbps

Community Anchor Institution (CAI)

An entity that facilitates wider use of broadband service by vulnerable populations (e.g., schools, libraries, senior centers)¹

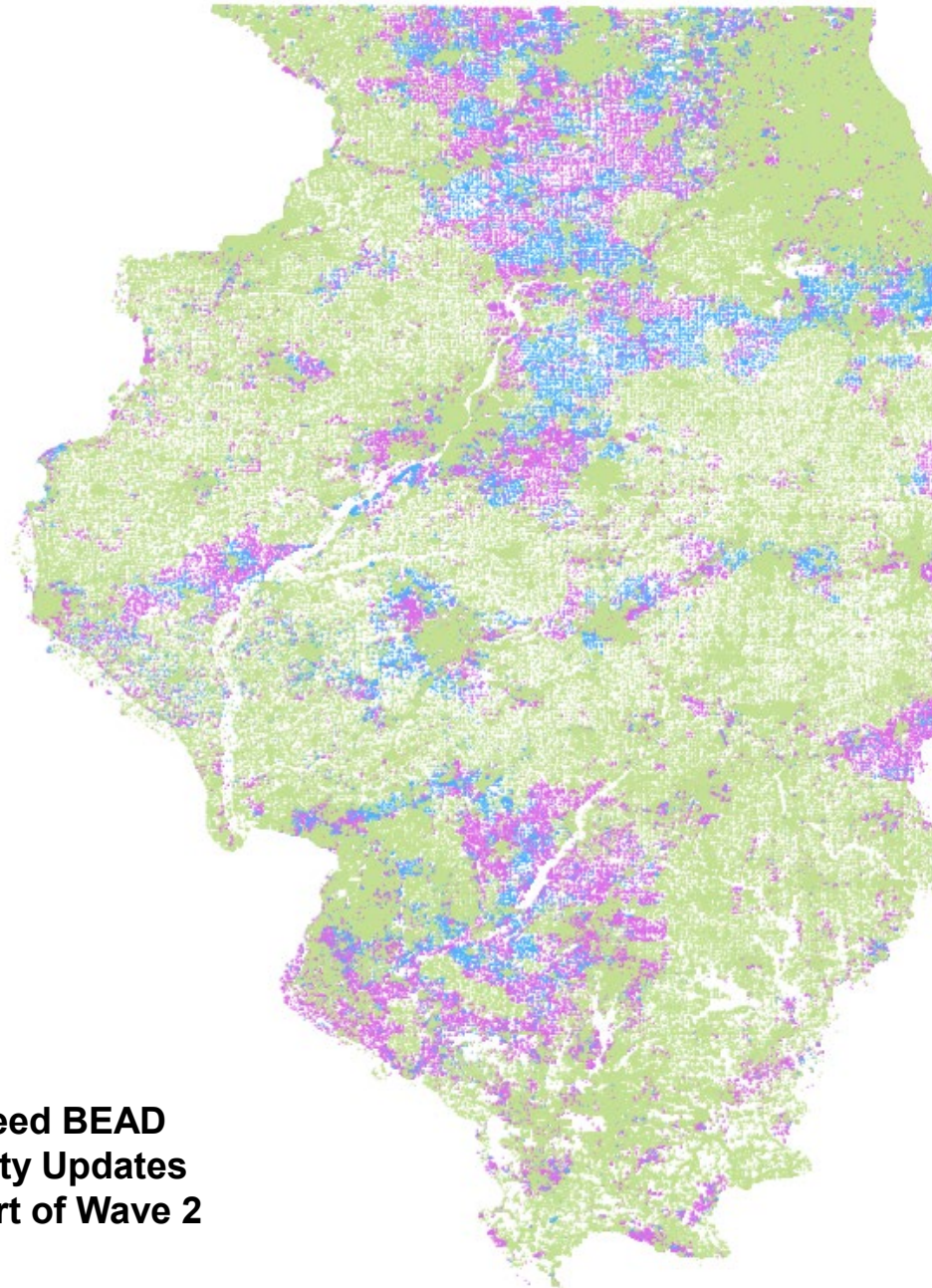
CAIs without access to 1Gbps symmetrical broadband service are eligible for BEAD funding

Illustration of a PAU, where each point shown is an eligible location



1. Details on Illinois's definition of CAIs can be found in Illinois's BEAD Initial Proposal Volume I

**175,293
locations are
eligible to be
connected
through BEAD**



**Broadband service
availability in Illinois, per
BEAD-eligibility data**

~4.2M

Total Broadband Serviceable
Locations (BSLs)

~107K (~3%)

Unserved BSLs

(locations with <25/3Mbps speed)

~65K (~1%)

Underserved BSLs

(locations with ≥25/3Mbps and
<100/20Mbps speed)

~172K
BEAD-
eligible
BSLs

~4.0M (~96%)

Served BSLs

(locations with ≥100/20Mbps speed)


Plus **3,356** eligible community anchor
institutions (CAIs)

**Note: Locations deemed to no longer need BEAD
funding based on the latest Serviceability Updates
Process have been published at the start of Wave 2**

Recap: Pre-qualification participants can apply their pre-approved qualifications to their Entity Submission Form response

ILLUSTRATIVE INFORMATION PROVIDED ON AN INFORMATIONAL BASIS AND DOES NOT SUPERCEDE ORIGINAL DOCUMENTS

Illustrative Pre-Qualification Final Determination email



ILLUSTRATIVE

Dear Sample Corporation (EIN: 12-3456789),

The Illinois Office of Broadband appreciates your participation in the Pre-Qualification process for the BEAD-funded Connect Illinois Round 4. This letter is a summary of all approved qualifications from the Pre-Qualification process, and we encourage you to participate in the formal subgrantee selection process when it opens.

(1) Summary of Approved Qualifications

The following qualifications have been approved across your pre-qualification submissions:

- A. Financial Capabilities:** A1, A2
- B. Managerial Capabilities:** B1
- C. Technical Capabilities:** C2
- D. Legal and Regulatory Compliance:** D1, D2
- E. Operational Capabilities:** E2
- F. Ownership:** F1
- G. Other Public Funding:** G1

During the subgrantee selection process, you do not need to re-submit materials for approved qualifications, unless any materials originally submitted to support an approved qualification have become outdated. However, the State reserves the right to re-assess the qualifications, capabilities, and resources of all prospective subgrantees based on the application-specific technical, geographical, and financial details of the actual proposed projects prior to making final awards.

(2) Next Steps for Application Process

To link your pre-approved qualifications to your application during the subgrantee selection process, please enter the following in the Entity Submission Form (Part 1 of the application):

- EIN:** 12-3456789
- Pre-Qualification Participant ID:** PPQ-9999T
- Pre-Qualification Approved Qualifications:** Please populate based on list provided above



How to apply pre-approved qualifications during Connect Illinois Round 4

Navigate to **Pre-Qualifications Process** section in the **Entity Submission Form**

Respond **Yes** to **E.AD.8.A**

Enter your **Pre-Qualification Participant ID (PPQ-####X)** from your **Final Determination email** in **E.AD.8.B**

From the **pre-approved qualifications listed in your Final Determination email**, select those that you would like to reflect in your application in **E.AD.8.C**, which allows you to skip corresponding questions in the Entity Submission Form

ILLUSTRATIVE

Administrative: Pre-Qualifications Process

E.AD.8.A. Pre-Qualification Process Participation

Did you participate in the BEAD Funded Connect Illinois Round 4 Pre-Qualification process?

☒ Yes

☐ No

Clear Selection

E.AD.8.B. Pre-Qualification Participant ID

Please enter the PPQ ID from the Participation Notice Letter provided by the Illinois Office of Broadband. This Participation Notice Letter contains a Pre-Qualification Participant ID (starting with PPQ), which will connect your approved qualifications to this submission.

Please double-check this is correctly entered before proceeding. Failure to enter the valid ID may result in your application not being considered during this Wave.

PPQ-9999T

+ Add result

E.AD.8.C. Pre-Qualification Approved Qualifications

Using the Pre-Qualification Participation Notice Letter, select all qualifications below that have been denoted "APPROVED" on the Pre-Qualification Participation Notice Letter. This will hide all qualifications for which you have been approved. If materials need to be updated, even if a qualification is approved, do not select the qualification in the list.

Note: You are responsible for cross-checking and confirming the selected qualifications are accurate and correct. Failure to submit all qualifications required in this form, either by carrying over your pre-approved qualifications or by submitting new materials for review, may result in your application not being considered during this Wave.

☒ A1

☒ A2

☐ A3

Note: All RDOF awardees are required to submit updated materials for G4