

# Broadband Maps Guide

A basic visual guide to the many broadband maps available for public use.

While this guide does not include every function of every map, it details the most commonly accessed views and programs.

Not every map is created or maintained by the state of Illinois or its stakeholders. All maps note their data sources.

*For any mapping, data, or location questions, please contact the Illinois Office of Broadband at [broadband@illinois.gov](mailto:broadband@illinois.gov)*



**Illinois**  
**Department of Commerce**  
& Economic Opportunity  
OFFICE OF BROADBAND



ILLINOIS  
BROADBAND  
LAB

# Table of Contents

## **Broadband Map Basics**

- 3 What map should I use?
- 4 Key terms

## **Illinois Broadband Map**

- 5 Connect Illinois Rounds 1, 2, and 3 Award Areas
- 5 Search by address, city, county, etc.
- 6 Using the Layers menu
- 6 View Federal Award Areas (Rural Development Opportunity Fund (RDOF) and more)
- 7 View Access by Speed and Technology
- 8 Broadband Provider Search
- 9 Printing Maps and Data Downloads

## **Illinois BEAD Map**

- 10 Show locations by location type, area, provider, or project
- 11 Change map view by location type, provider, or technology
- 12 Download Map Data
- 12 Why isn't my location on this map?

## **Broadband Availability Dashboard**

- 13 Explore map by category like congressional district, library district, county, and more
- 13 Use the search tool

## **Illinois County Broadband Dashboard**

- 14 Narrow dashboard by county
- 14 View regional demographic and adoption data

## **FCC National Broadband Map**

- 15 Search by address or provider
- 16 Area summary
- 17 Area comparison and data download
- 18 Challenge a location or a location availability

## **FCC Broadband Funding Map**

- 19 Explore by funding program, apply additional filters, and search

## **USDA Public Searchable Map Database**

- 20 View Broadband Program Areas

## **Universal Service Administration Co. Connect America Fund Map**

- 21 View program areas and location information

# What Map Should I Use?

Each map focuses on a different lens of the broadband landscape. Each entity that releases a map uses their data and platforms to bring the best and most timely information to the user. Only by mapping this data and analyzing it visually can we see the full scope of the landscape and use these tools to help close digital access gaps across the state.

## **Illinois Broadband Map**

See state and federal grant areas and visualize access by speed and technology. Also layer locations over socioeconomic data like income, race, and level of education and see total locations served by internet service providers.

## **Broadband Availability Dashboard**

Overview of community areas by level of access, based on BEAD eligibility. Filter locations by provider, technology and speed. Apply those filters to individual counties, Illinois State Senate, House, and Congressional districts, as well as library districts.

## **Illinois County Broadband Dashboard 2026 - NEW!**

Explore BEAD eligibility, demographic breakdowns, broadband adoption, Connect Illinois statistics, and Illinois Broadband Lab collaborative programs by county.

## **Illinois BEAD Award Map**

View BEAD funded Connect Illinois Round 4 award areas by technology and provider.

## **FCC National Broadband Map**

View available providers at individual locations as well as their maximum advertised speeds.

## **FCC Broadband Funding Map**

View federal funding sources at individual locations, such as Federal Communications Commission (FCC), National Telecommunications and Information Administration (NTIA), Rural Utility Service (RUS), and Department of Treasury grants.

## **USDA Public Searchable Map Database**

View project areas for various USDA loan and grant programs, such as the Rural Opportunity Development Fund (RDOF)

## **Universal Service Administration Co. Connect America Fund Map**

See progress reports for programs such as Connect America Fund (CAF), Rural Broadband Experiments (RBE), Rural Digital Opportunity Fund (RDOF), and Alternative Connect America Cost Model (ACAM).

# Key Broadband Map Terms

Use this glossary for common broadband map references

## **Broadband Availability Data**

Providers of fixed broadband service must identify the areas – as either a coverage polygon or list of locations – where they have built out their broadband network infrastructure and to which they either have a customer or could perform a standard broadband installation. This is reported through the BDC.

## **Broadband Data Collection (BDC)**

This is the FCC's program for collecting detailed, location-by-location data on fixed and mobile broadband availability directly from internet service providers. Its purpose is to improve the accuracy of national broadband maps.

## **Broadband Serviceable Locations (BSLs)**

A broadband serviceable location (BSL) is 'a business or residential location in the United States at which mass-market fixed broadband Internet access service is, or can be, installed.

## **Community Anchor Institutions (CAIs)**

Institutions such as schools, libraries, medical and healthcare providers, public safety entities, community colleges, and other institutions of higher education, and other community support organizations and agencies that provide outreach, access, and digital literacy training.

## **Federal Communications Commission (FCC)**

The Federal Communications Commission (FCC) regulates interstate and international communications by radio, television, wire, satellite, and cable in all 50 states, the District of Columbia and U.S. territories. An independent U.S. government agency overseen by Congress, the Commission is the federal agency responsible for implementing and enforcing America's communications law and regulations.

## **FCC Fabric**

The Broadband Serviceable Location Fabric (Fabric) is a dataset that includes all locations in the United States and Territories where fixed broadband internet access service has been or could be installed. The Fabric allows broadband data filers and the FCC to work from a single, standardized list of locations for the Broadband Data Collection (BDC).

## **H3 Hexes or Hexes**

H3 is a discrete global grid system for indexing geographies into a hexagonal grid, developed at Uber. Coordinates can be indexed to cell IDs that each represent a unique cell. Indexed data can be quickly joined across disparate datasets and aggregated at different levels of precision.

## **State and Federal Enforceable Commitments**

Any location that is already subject to a legally enforceable federal, state, or local commitment to deploy broadband infrastructure.

# Illinois Broadband Map

See state and federal grant areas and visualize access by speed and technology. Also layer locations over socioeconomic data like income, race, and level of education and see total locations served by internet service providers.

**Access the Map** Go to <https://illinois-broadband-cngis.hub.arcgis.com/>

## Access the Illinois Broadband Map from the Maps Hub

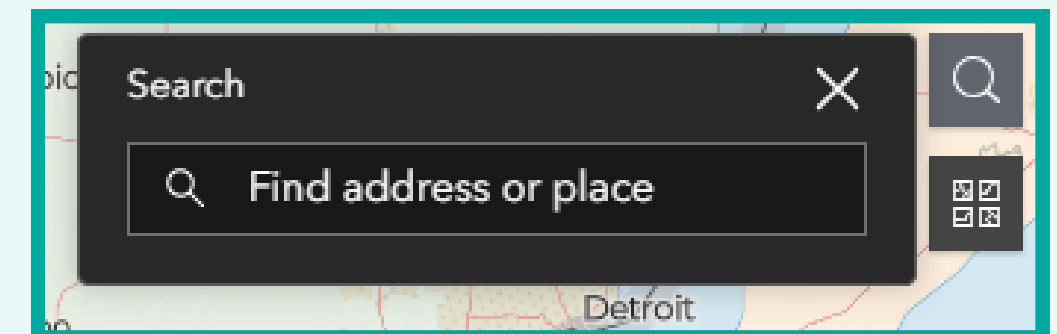
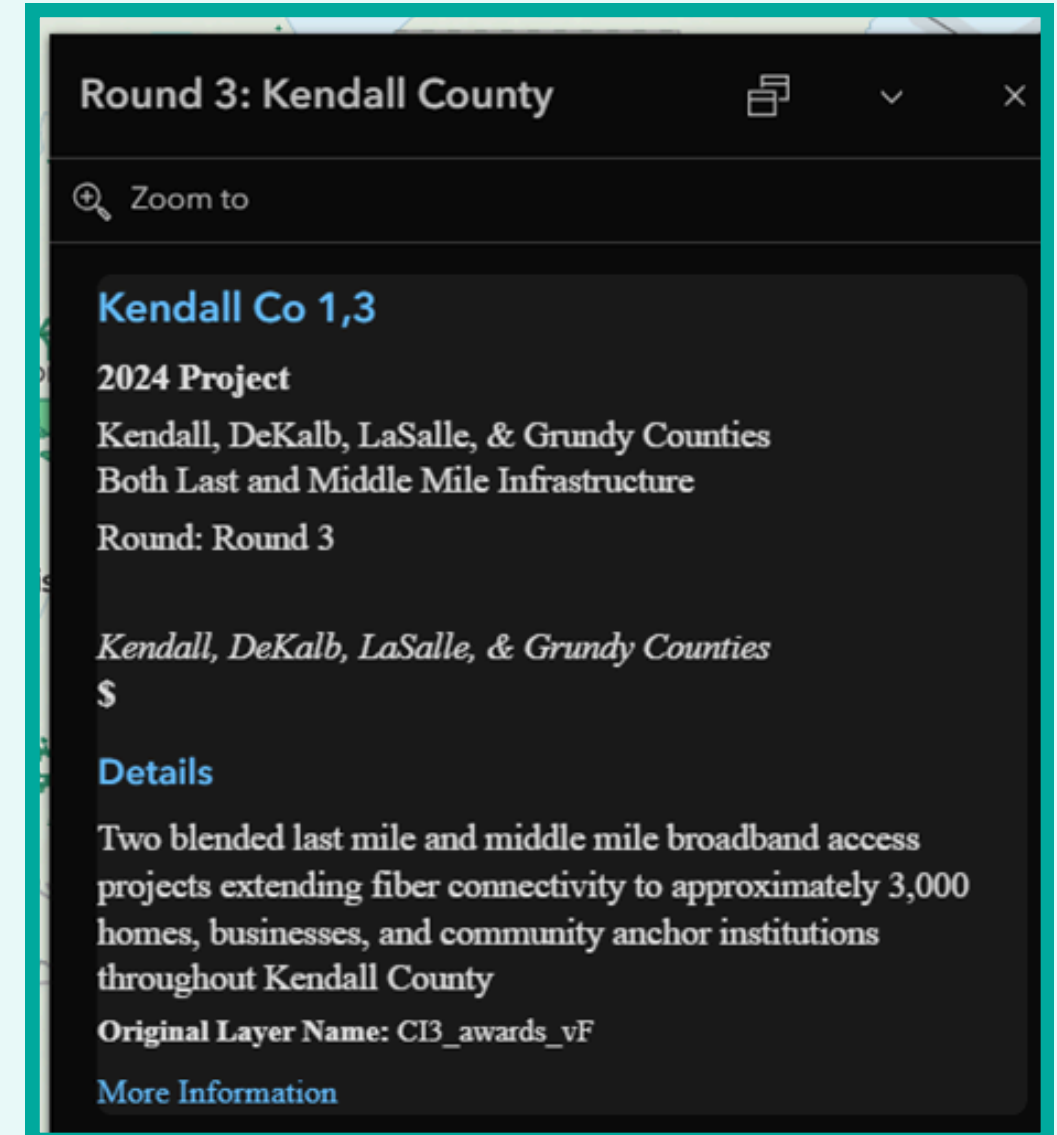
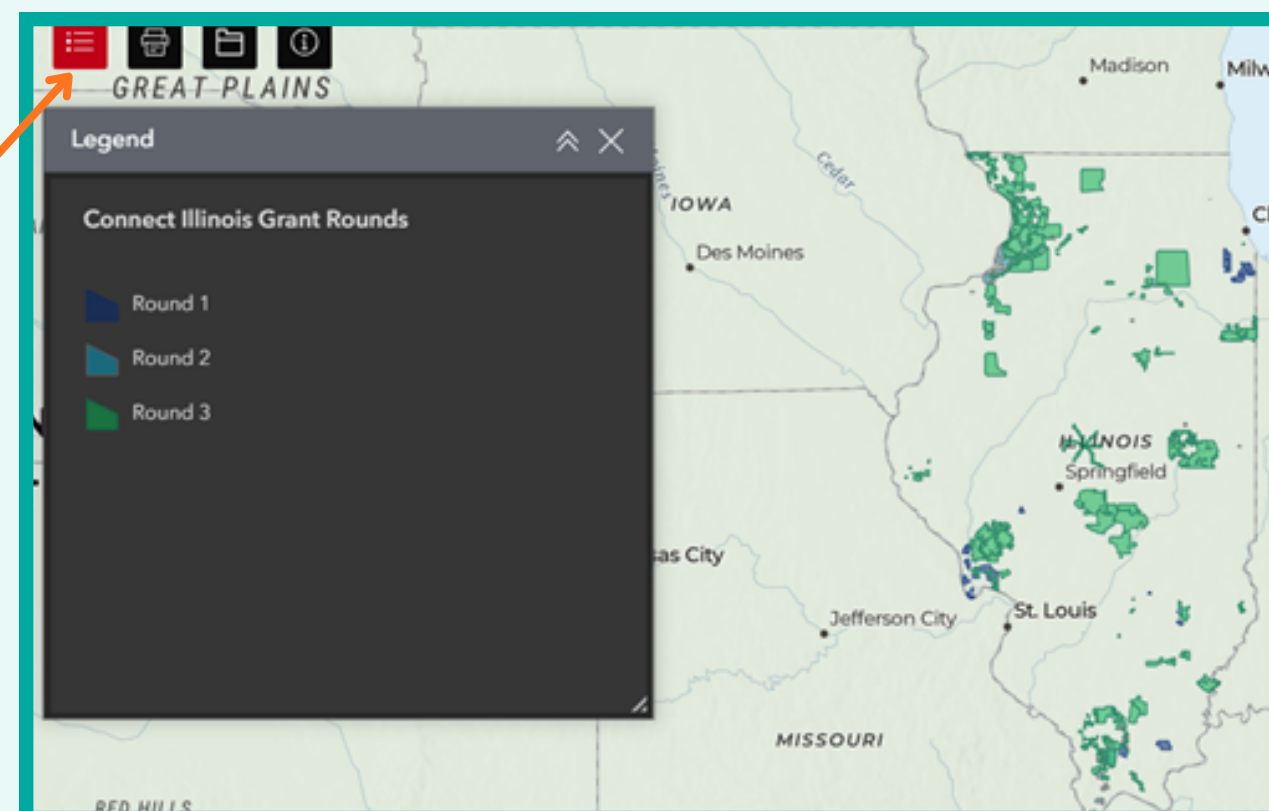
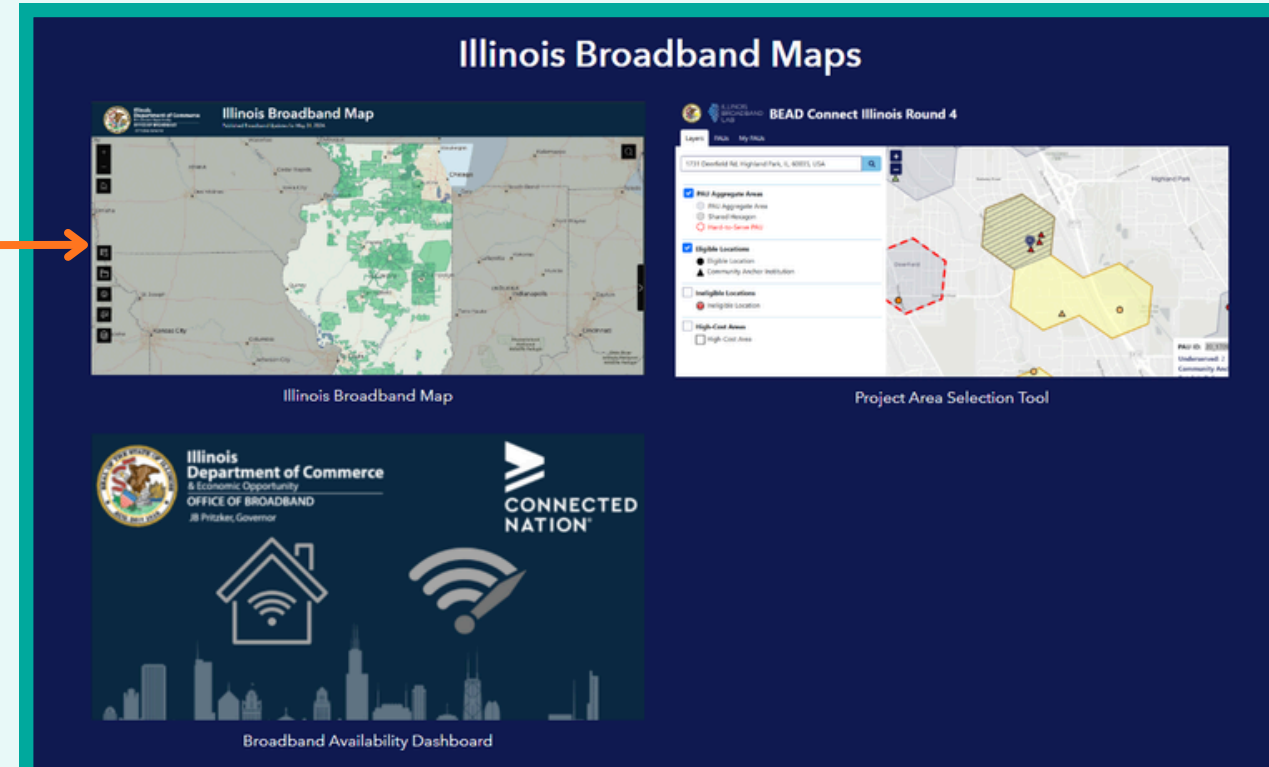
- At the hub, select the Illinois Broadband Map
- Read and accept the terms of use by selecting the checkbox at the bottom of the window, and clicking the OK button

## View Connect Illinois Round 1, 2, and 3 Areas

- This setting is the default view of the Illinois Broadband Map, and should appear when you open the map.
- Click on the highlighted areas to see grant project details
- Use the legend button to see the colors used for projects in round 1, 2, and 3

## Search by Address, County, City, etc.

- Use the magnifying glass icon to open the search bar. Input any address, county, city, town, etc to see location data.

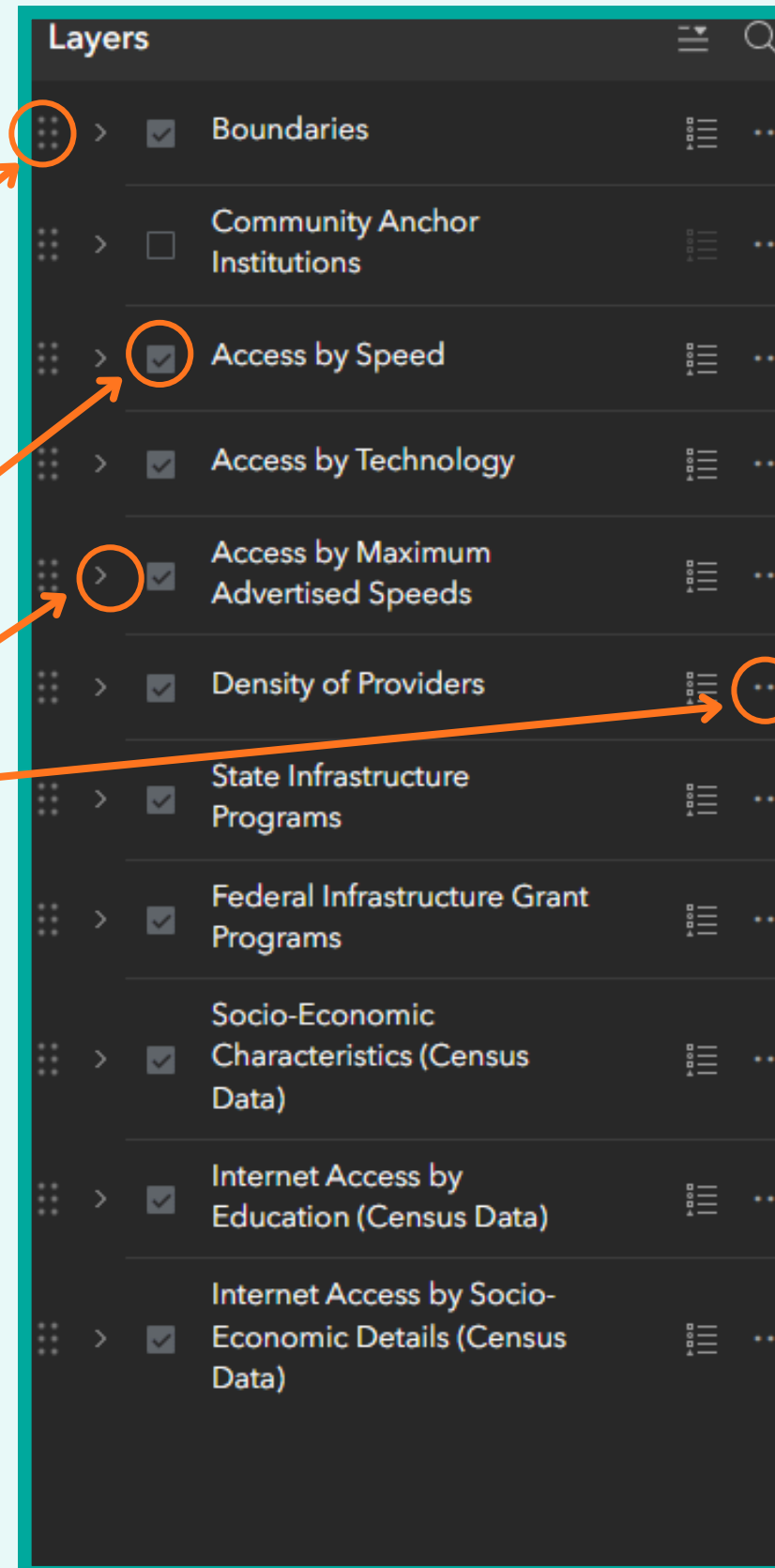


# Illinois Broadband Map

See state and federal grant areas and visualize access by speed and technology. Also layer locations over socioeconomic data like income, race, and level of education and see total locations served by internet service providers.

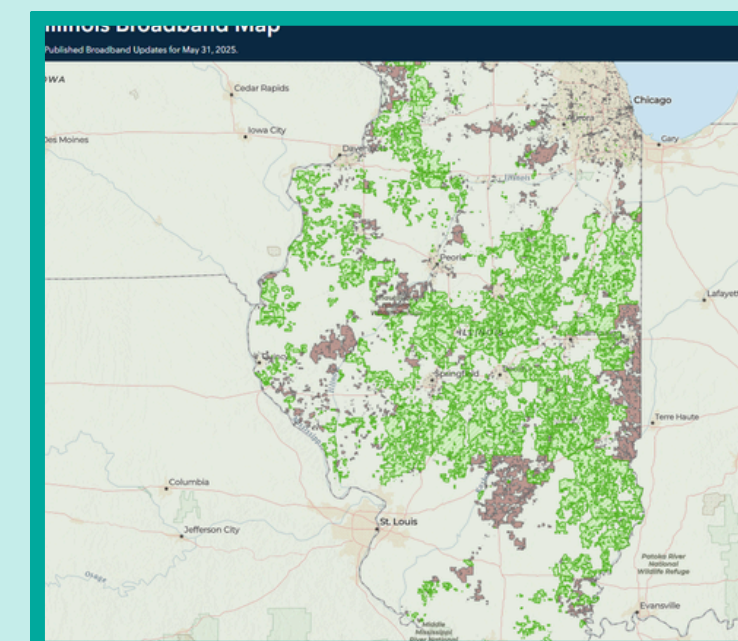
The Layers menu on the right side of the screen will help you turn on and off layers on the map.

- Use the six dots on the left side as a handle to drag and drop layers in the order you want. Higher options will be layered over lower options.
- Use the check boxes to select which layers to show on the map.
- Use the arrows to expand the category and see more layer options
- Use the three dots on the right side to adjust the transparency of the layer

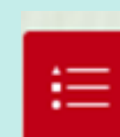


## View Federal Award Areas

- Check the box for “Federal Infrastructure Grant Programs”. We recommend unchecking all other categories unless you specifically would like to overlay them.
- Use the arrow on the left side of the layer category to expand the menu and see more options. Select the option you are looking for and uncheck any of the other categories to see it clearly.
- For example, if you are looking for the Rural Development Opportunity Fund areas, you would check the following categories:
  - Federal Infrastructure Grant Programs
  - Federal Buildout Commitments Eligible Areas
  - Rural Digital Opportunity Fund-Phase 1 Winning Bid Areas



Use the legend button to open the legend.

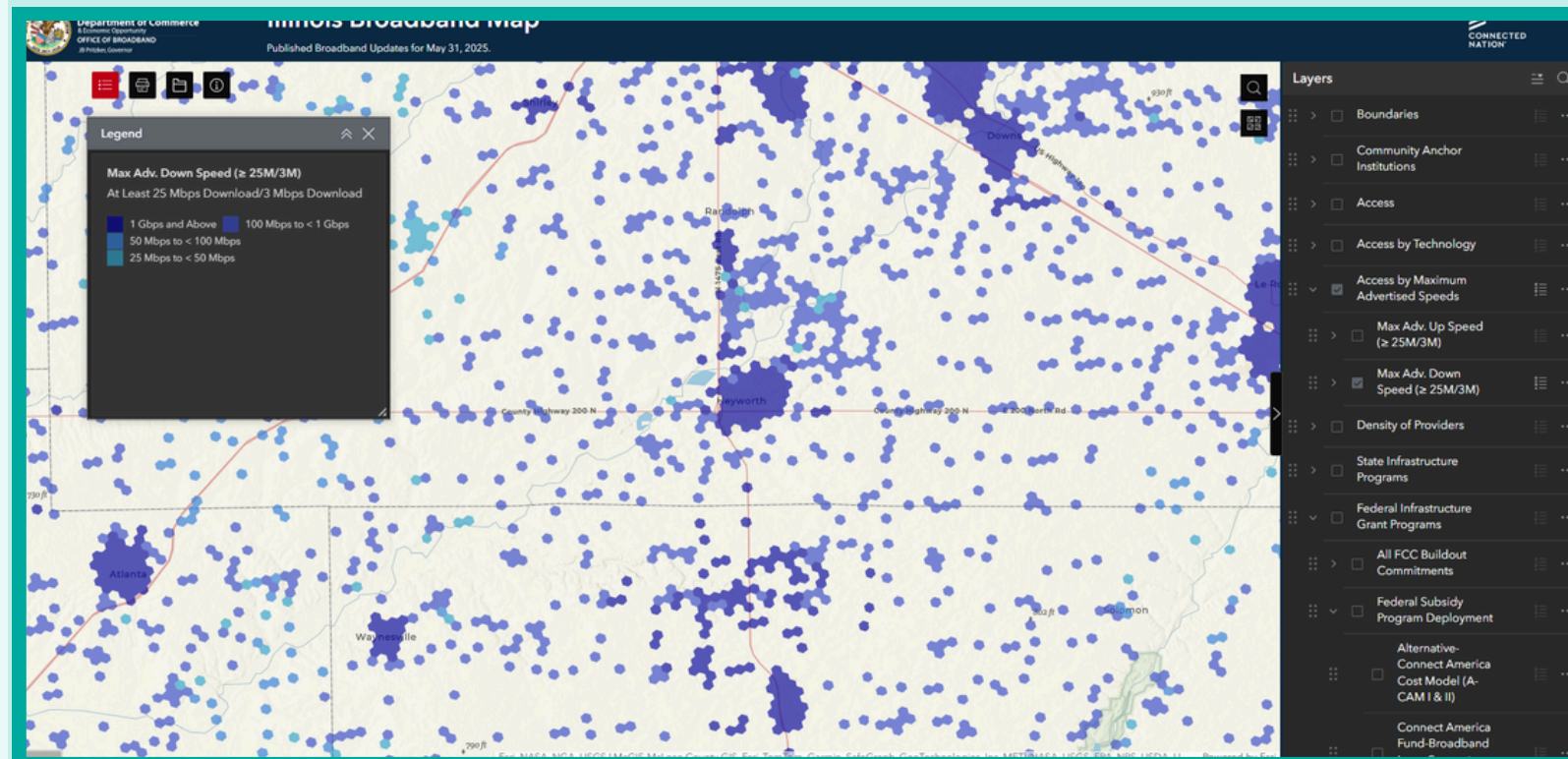


# Illinois Broadband Map

See state and federal grant areas and visualize access by speed and technology. Also layer locations over socioeconomic data like income, race, and level of education and see total locations served by internet service providers.

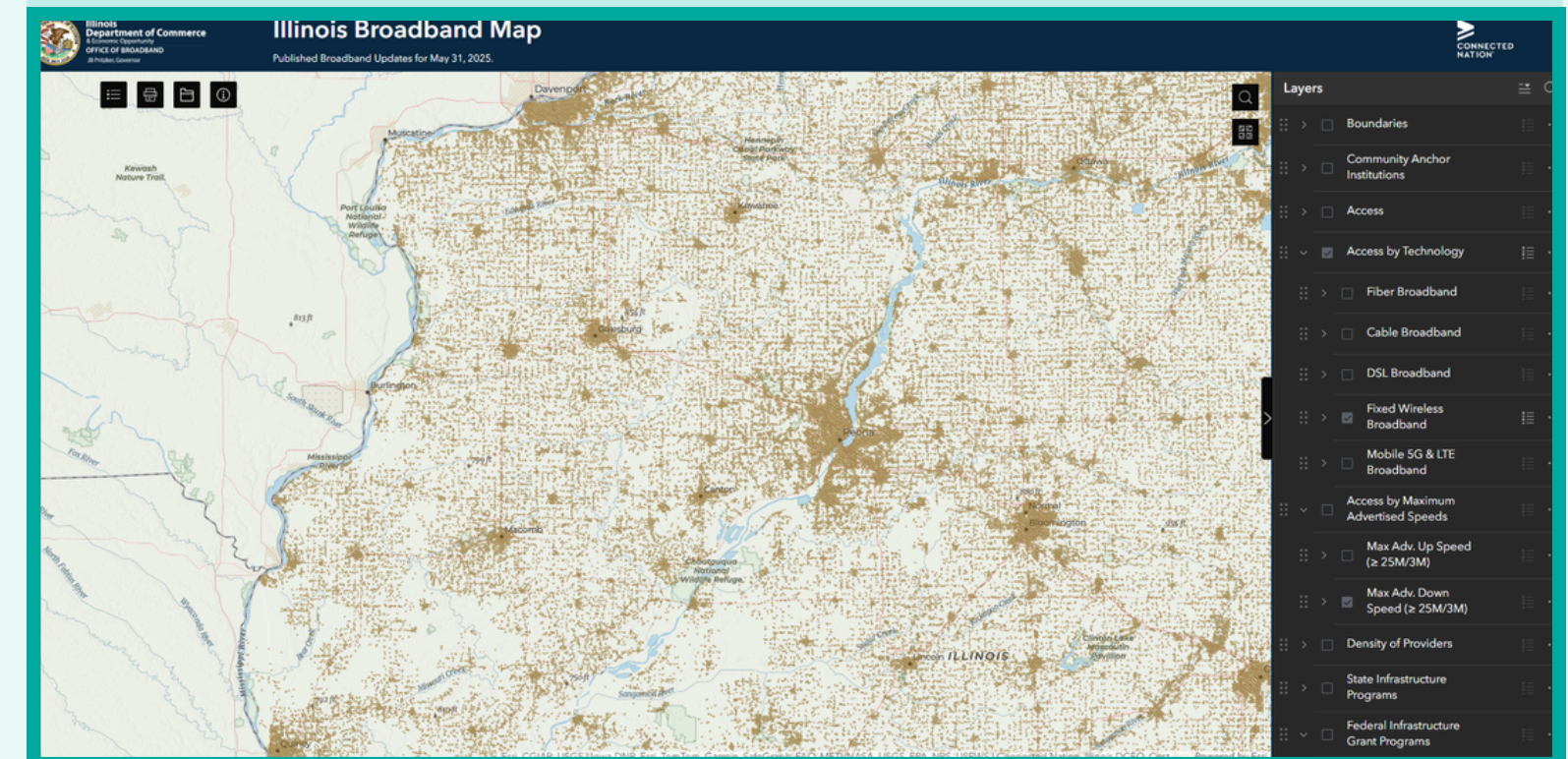
## View Broadband Access by Maximum Advertised Speed

- Use the Layers menu to check the “Access by Maximum Advertised Speed” category.
- Use the arrow on the left side of the layer category to expand the menu and see more options. Select the option you are looking for and uncheck any of the other categories to see it clearly.
- Check the “Max Adv. Up Speed ( $\geq 25\text{M}/\text{M}$ )” to see see all locations with upload speeds greater than or equal to 25 mbps.
- Check the “Max Adv. Down Speed ( $\geq 25\text{M}/\text{M}$ )” to see see all locations with download speeds greater than or equal to 25 mbps.



## View Broadband Access by Technology

- Use the Layers menu to check the “Access by Technology” category.
- Use the arrow on the left side of the layer category to expand the menu and see more options. Select the option you are looking for and uncheck any of the other categories to see it clearly.
- Check the box for the desired technology and the map will display the hexes that have that technology available.



# Illinois Broadband Map

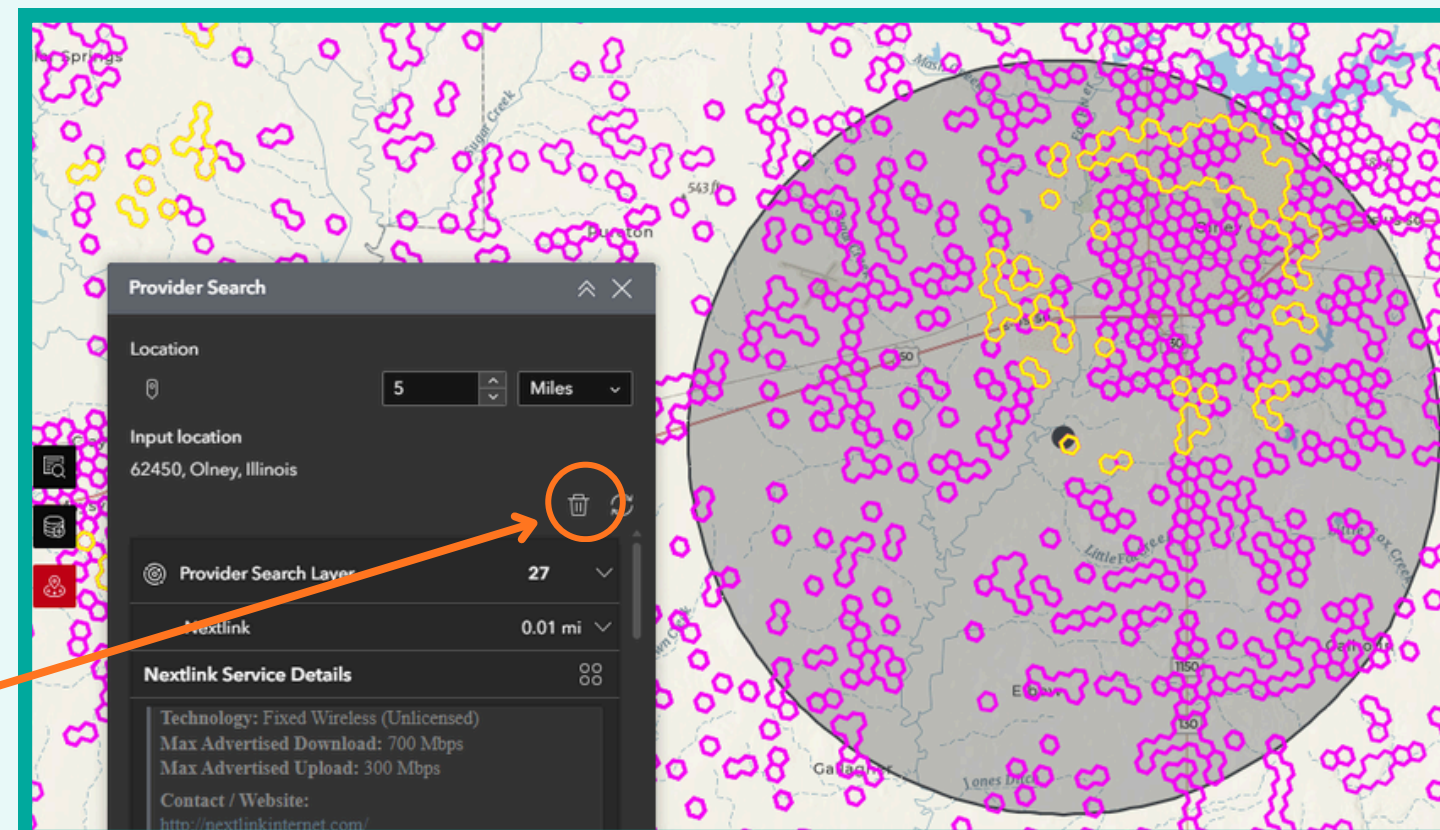
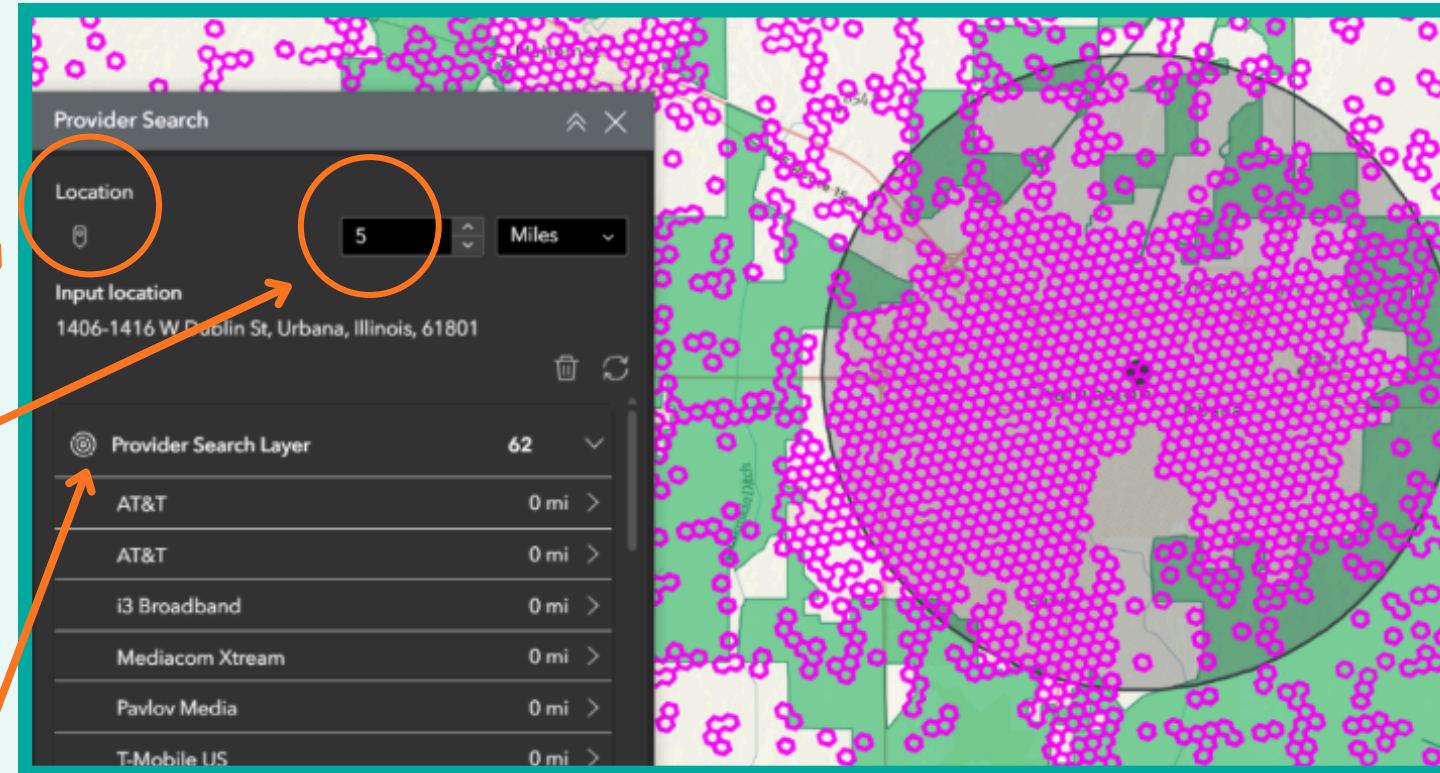
See state and federal grant areas and visualize access by speed and technology. Also layer locations over socioeconomic data like income, race, and level of education and see total locations served by internet service providers.

## Broadband Provider Radius Search



Use the provider search icon on the left side of the screen to start a broadband provider radius search to see how many providers are within a selected radius of a location.

- Click on the icon to access the search box.
- Click on the location marker, then click the location where you would like to search.
- Adjust the radius in number of miles. A larger radius may take longer to load on the map. Try starting with 1, 5, 15, or 25 miles.
- The search box will show a number of providers operating in locations within the selected radius.
- Click on the Provider Search Layer bar to load the map layer. Turning off additional layers may make the pink hexes easier to see.
- Hover over the name of each provider to highlight locations served by that provider.
- Click the name of each provider to see details like technology used, maximum advertised speeds, and contact information.
- To start a new search, click the trash can icon on the right side of the search box.



# Illinois Broadband Map

See state and federal grant areas and visualize access by speed and technology. Also layer locations over socioeconomic data like income, race, and level of education and see total locations served by internet service providers.

## Printing Maps



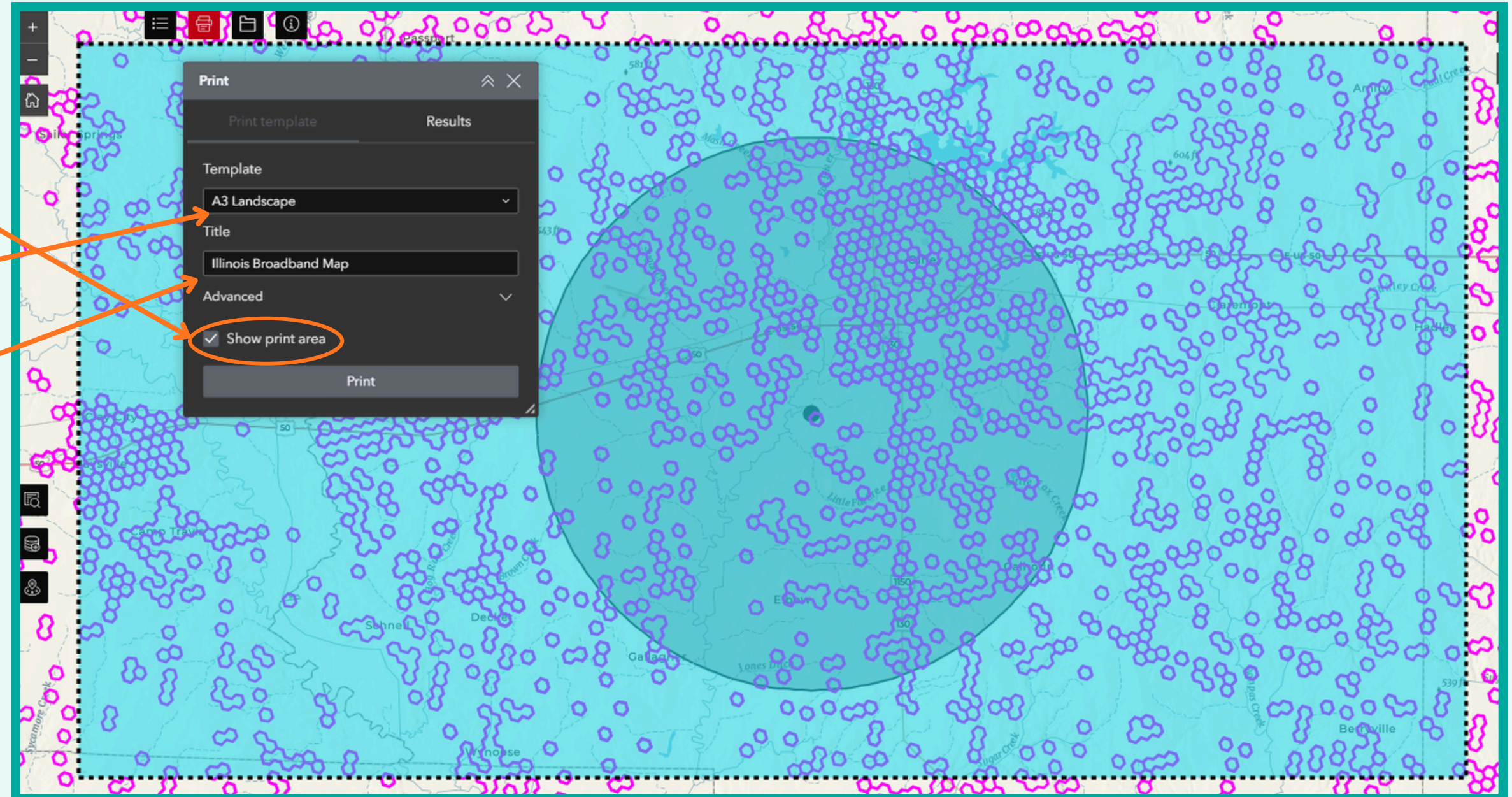
Click the print button at the top of the window to open the print menu

- Select the checkbox for “Show print area” to see the blue print preview box.
- Adjust the size of the print box by selecting different sizes of template in the Template drop down menu.
- Name the map file in the Title box.
- Adjust the scale of the map behind the box by dragging or zooming in or out with your mouse or the plus and minus zoom buttons in the top left corner.
- Your map will be found in the top Results tab, where you can then download or print.
- **Tip: You can also screenshot or use your computer’s snipping tool to save a picture of your selected map.**

## Data Layer Downloads



Click the file button at the top of the window to access the shapefiles for state grant programs. Contact [broadband@illinois.gov](mailto:broadband@illinois.gov) for more information about downloading map data.



# Illinois BEAD Map (Connect Illinois Round 4)

See state and federal grant areas and visualize access by speed and technology. Also layer locations over socioeconomic data like income, race, and level of education and see total locations served by internet service providers.

**Access the Map** Go to <https://www.illinoisbead.org/>

Use the top selection bar to choose map views and filter results.

**BEAD Connect Illinois Round 4: Provisional Awards**

Color map by: **Location Type** (dropdown)

Filter by area: County or municipality... (input field)

Filter by provider: **All Providers** (dropdown)

Filter by project: **All Projects** (dropdown)

**Reset Filters** (button)

**Color map by Location Type, Broadband Provider, or Technology**

- Location Type**  
View locations as either BSL or CAI
- Broadband Provider**  
View locations by the internet service provider
- Technology**  
View locations by technology of project, such as fiber to the premises, satellite, or fixed wireless

**Filter by Area**  
Enter a town, city, or county to display all locations in that area

Filter by area: Sangamon County

**Filter by Provider**  
Use the drop down menu to choose to display all projects by a single internet service provider

Filter by provider: GARGOYLE TECHNOLOGI... (dropdown)

**Filter by Project**  
Use the drop down menu to choose to display a single project

Filter by project: BOTB-0227 (dropdown)

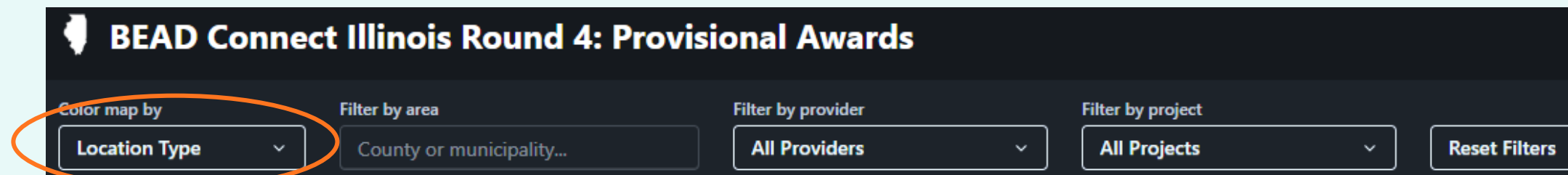
**Reset Filters**  
Use this button to return the map to its default view

# Illinois BEAD Map (Connect Illinois Round 4)

See state and federal grant areas and visualize access by speed and technology. Also layer locations over socioeconomic data like income, race, and level of education and see total locations served by internet service providers.

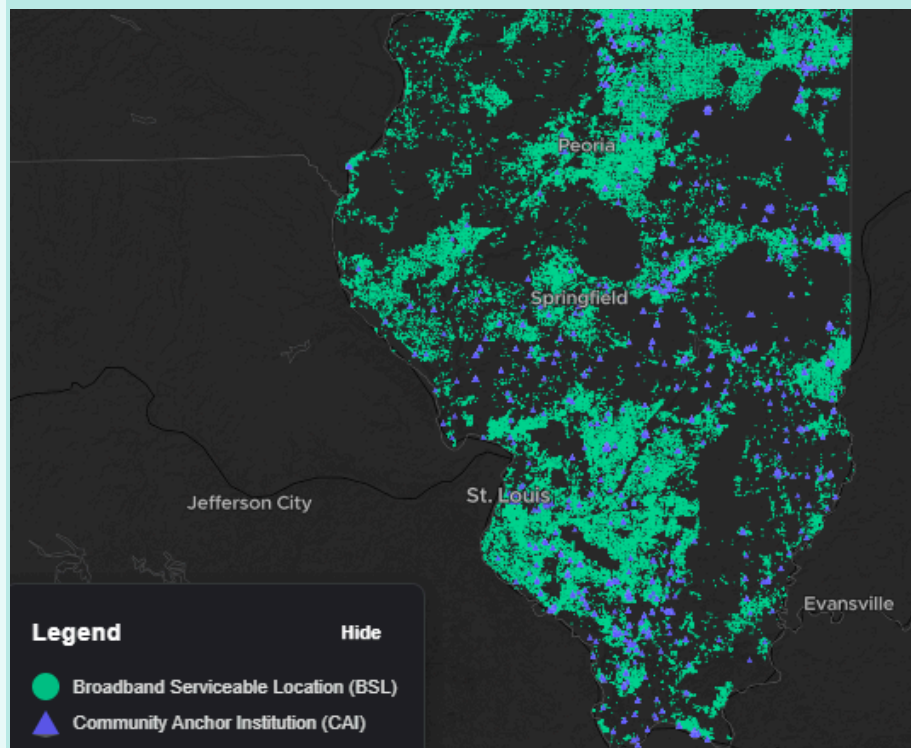
## Access the Map

Go to <https://www.illinoisbead.org/>



### View map by Location Type

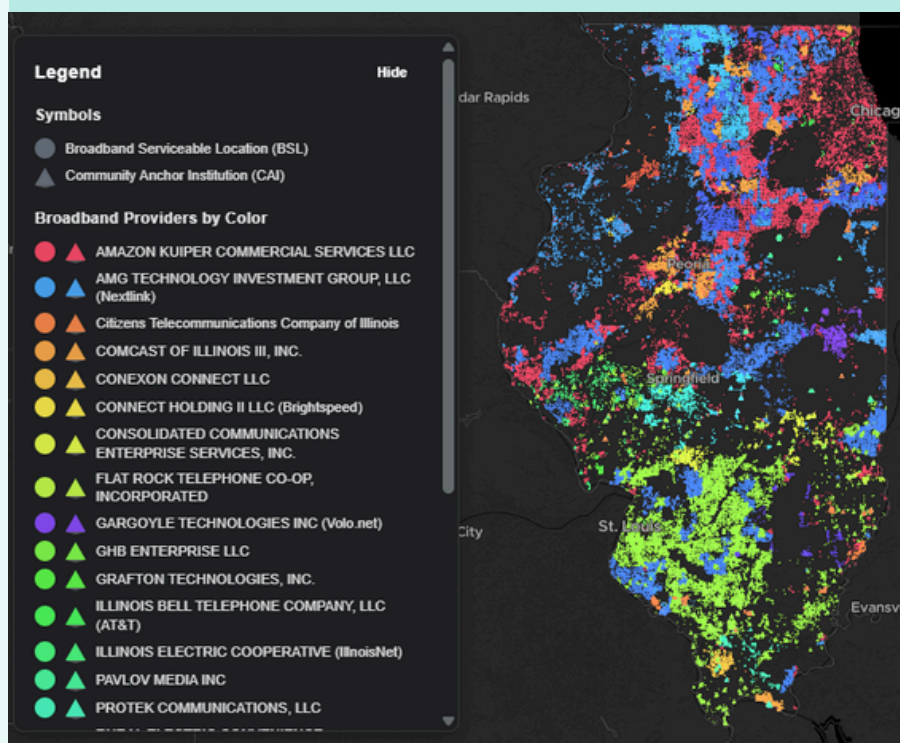
When opening the map, the default view is for Location Type.



View locations as either a Broadband Serviceable Location (BSL) or Community Anchor Institution (CAI)

### View map by Broadband Provider

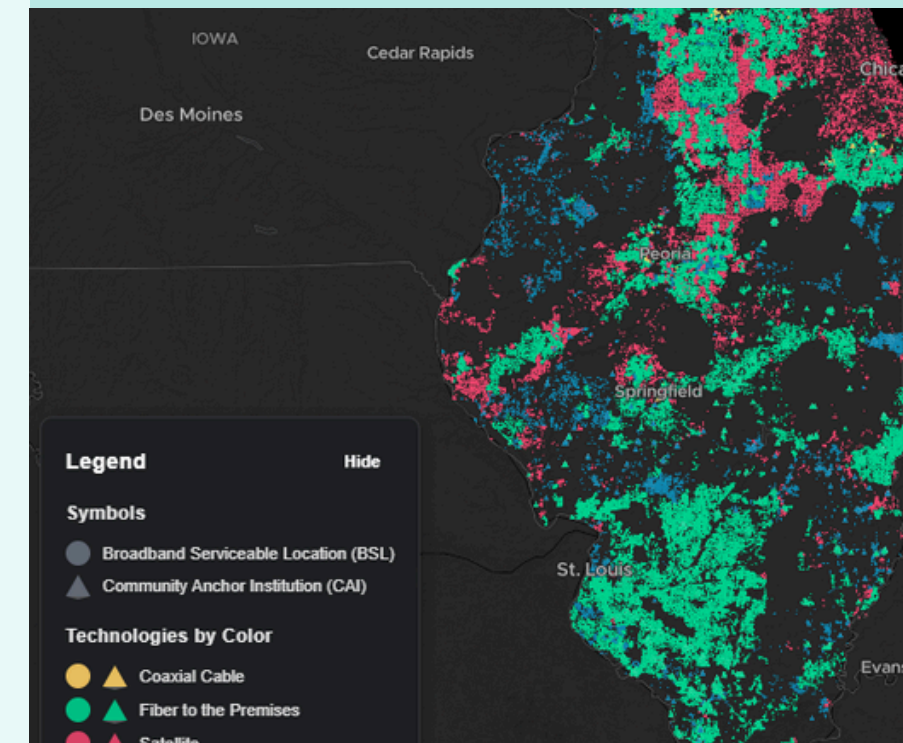
Change the “Color map by” drop down selection to Broadband Provider



Different colors indicate different broadband providers and their proposed projects.

### View map by Technology

Change the “Color map by” drop down selection to Technology



Different colors indicate different broadband technologies, like fiber to the premises, satellite, or fixed wireless.

Hover over individual locations to see details like project provider, technology, technology speed, and exact location

# Illinois BEAD Map (Connect Illinois Round 4)

See state and federal grant areas and visualize access by speed and technology. Also layer locations over socioeconomic data like income, race, and level of education and see total locations served by internet service providers.

## Download Map Data

Use the blue Download the data text at the top right corner to save data either as Shapefile or GeoPackage. Choose to download either BSLs or CAIs

Category	Format	File Size
Broadband Serviceable Locations	Shapefile	4.3 MB
	GeoPackage	37.7 MB
Community Anchor Institutions	Shapefile	66 KB
	GeoPackage	446 KB

Contact broadband @illinois.gov with questions about downloading data

## Why isn't my location on this map?

Locations are only eligible for BEAD funding if:

- They are considered unserved or underserved, unable to receive broadband service speeds of at least 100/20 mbps. (Use the FCC Fabric Map to see what connections are available for your location.)
- They are not currently claimed as part of another federal grant program. (Use the Illinois Broadband Map to see state and federal grant program areas.)
- A broadband service provider has not planned to connect that location with broadband speeds within a year or two from the mapping portion of the BEAD timeline. (Contact local providers to ask about upcoming projects.)

*The Illinois BEAD Map is not anticipated to add any more locations for the course of the grant project. Contact broadband@illinois.gov with questions.*

**Legend** Hide

**Symbols**

- Broadband Serviceable Location (BSL)
- ▲ Community Anchor Institution (CAI)

**Technologies by Color**

- Coaxial Cable
- Fiber to the Premises
- Satellite
- Fixed Wireless

Use the **data panel** on the right to see information like number of locations, maximum download and upload speeds, breakdown of technologies, and more

When filtering your results by area, provider, or project, this panel will show data for **only that selection**.

Use the **legend** on the bottom left to identify the symbols on the map.

This is a summary of locations in Sangamon County

Total Locations: 3,338

Broadband Serviceable Locations: 3,317

Community Anchor Institutions: 21

**Maximum Download Speeds**

Speed Range	Count	Percentage
100-200 Mbps	488	14.6%
200-500 Mbps	14	0.4%
500-1000 Mbps	0	0.0%
1000+ Mbps	2,836	85.0%

**Maximum Upload Speeds**

Speed Range	Count	Percentage
20-50 Mbps	502	15.0%
50-100 Mbps	0	0.0%
100-200 Mbps	0	0.0%
200+ Mbps	2,836	85.0%

**Technologies**

# Broadband Availability Dashboard

Overview of community areas by level of access, based on BEAD eligibility. Filter locations by provider, technology and speed. Apply those filters to individual counties, Illinois State Senate, House, and Congressional districts, as well as library districts.

**Access the Map** Go to <https://illinois-broadband-cngis.hub.arcgis.com/>

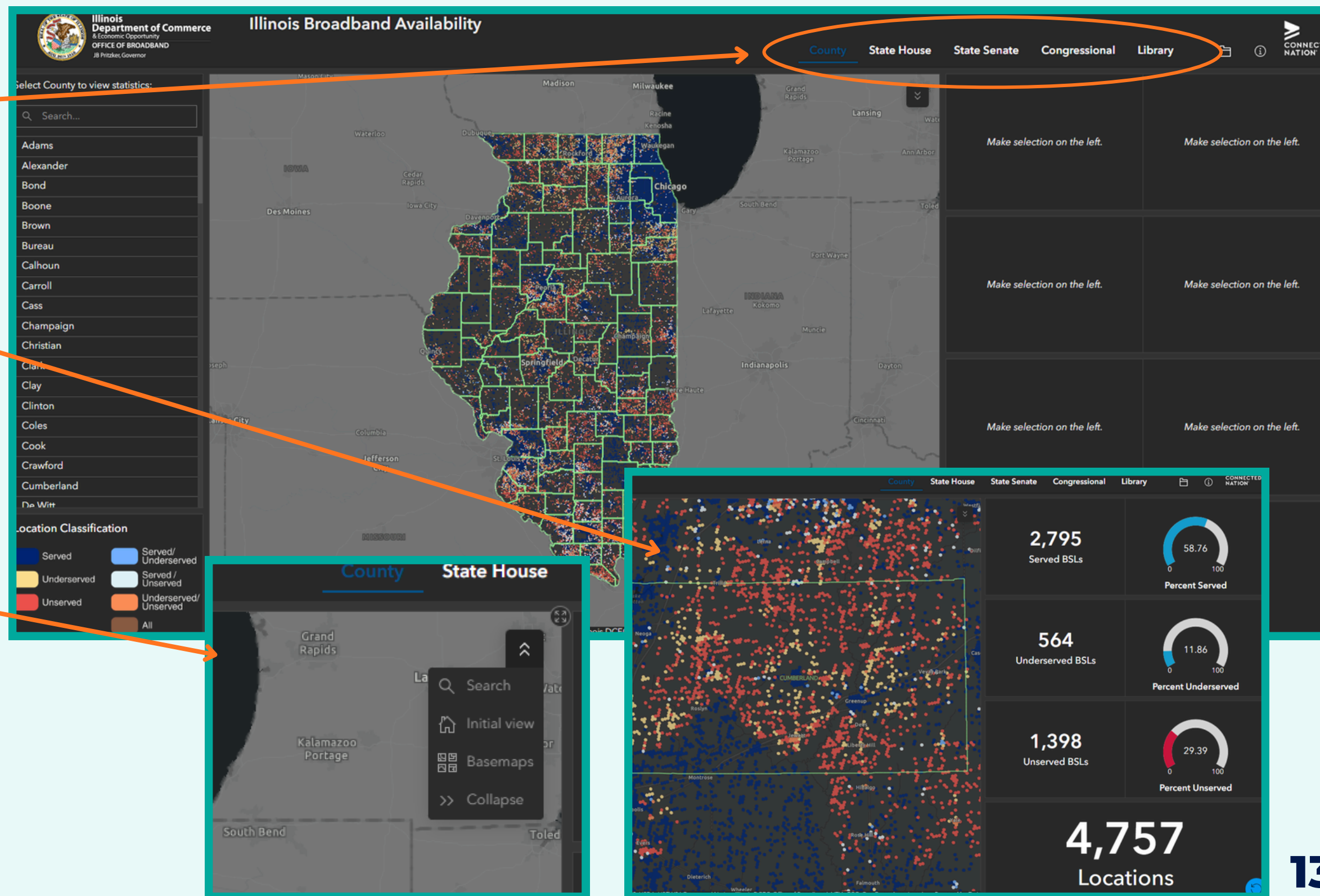
Select the Broadband Availability Dashboard

## Explore the Map by Category

- Use the category selection bar at the top of the screen to explore data on a category level
- Use the selection bar on the left to explore data in that selected area
- Individual BSLs will be displayed in different colors based on the available broadband speeds. The legend shows the location classification colors
- Availability statistics will be displayed on the right.
- Use the blue undo circle in the bottom right to reset the map and explore another area

## Use the Search Tool and More

- Use the expanding arrows in the top right of the map window to access the search bar. Use cities, municipalities, or exact addresses to zoom in on those locations
- Use the initial view button to return to the home map after exploring different views
- Use the basemap tool to see the map with different views, such as satellite, topographic, street level views and more



# Illinois County Broadband Dashboard 2026

Explore BEAD eligibility, demographic breakdowns, broadband adoption, Connect Illinois statistics, and Illinois Broadband Lab collaborative programs by county.

**Access the Map** <https://broadband.uillinois.edu/mapping-data/il-county-broadband-dashboard-2026/>

## Narrow Dashboard by County

- When opening the map, it will display all data on a statewide level. Use the Filter Report by County drop down menu at the top right to narrow the dashboard by a selected county
- The maps will zoom into the selected county and only display data from that county.
- Use the legend to identify funding programs and eligible areas. Learn more about IBL programs and data sources [here](#).
- Use the icons in the bottom right of the navigation bar to share dashboard information

## View Regional Demographic and Adoption Data

- Use the navigation bar at the bottom of the page to move to page 2
- This view breaks down demographic and broadband adoption data by Illinois Regional Economic Development region.
- Use the arrows in each category to sort and rank the data

### Current Status of Broadband by County

Published January 2026

#### Locations Eligible to be Connected through Connect Illinois Round 4

The \$1.04B Broadband Equity, Access, and Deployment (BEAD) Program will connect 175K+ locations statewide over the next 5 years.

**Filter Report by County:**

#### BEAD eligible locations (without reliable broadband service)

Served (at least 100/...	3,754,698 (90.11%)
Underserved	240,036 (5.76%)
Unserviced	59869 (1.44%)
No BEAD	
Enforceable Commit...	

#### Illinois Office of Broadband Programs

#### Demographic Breakdown of the Digitally Vulnerable (ACS 2023 5-year estimates)

Total Population	12,692,653
In covered households	2,313,812
Aged 60 or over	2,917,684
Incarcerated	59,075
Veteran	493,667
With a disability	1,482,931
With a language barrier	1,056,059
Racial or Ethnic Minority	4,654,141
Rural	1,674,918

#### Connect Illinois Rd1-3 grantees

Connect Illinois Grant Rd	Award Amount (\$)	County	Grantee	Total Broadband Serviceable Locations by Project
3	6,866,912	Adams	Adams Tel	496
3	8,508,131	Bureau	Strada 4	572
3	6,521,489	Carroll	Jo-Carroll 09	307
3	4,653,844	Carroll	Jo-Carroll 10	355

#### Broadband Adoption Statistics (ACS 2023 5-year estimates)

Total households	5,001,904
Smartphone dependent households	463,976
Cellular Data dependent households	589,539
Households without a computing device	279,507
Households without an internet subscription	522,140

#### Collaborative Projects

Illinois Connected Community Participant(s)	29
Accelerate Broadband Planning Participant(s)	19

#### Demographic Breakdown of the Digitally Vulnerable

Economic Development Region	Total population	In covered households	Aged 60 or over	Incarcerated	Veteran	With a disability	With a language barrier	Racial or Ethnic Minority	Rural
Central	527,173	105,451	142,541	9,224	30,780	76,750	6,251	84,606	194,545
East Central	355,907	82,652	79,502	2,054	15,311	42,016	17,416	91,493	119,067
North Central	633,912	120,309	155,146	5,033	32,454	76,338	9,812	109,922	205,300
Northeast	8,746,191	1,499,587	1,894,457	12,077	263,143	909,770	972,810	3,932,269	193,710
Northern Statewide	432,183	98,587	109,981	653	22,317	63,428	18,149	115,568	99,019
Northwest	482,027	92,147	136,265	6,796	28,766	68,850	13,881	77,335	193,102
Southwest	288,486	57,752	72,071	5,801	15,571	43,336	2,462	19,692	157,138
Southern	359,778	91,487	96,139	7,710	22,508	68,412	4,208	45,766	217,415
Southwest	677,469	119,284	170,399	6,183	50,578	100,440	7,962	153,476	188,800
West Central	209,627	46,556	59,183	3,544	12,239	33,591	3,108	23,954	106,702
<b>Total</b>	<b>12,692,653</b>	<b>2,313,812</b>	<b>2,917,684</b>	<b>59,075</b>	<b>493,667</b>	<b>1,482,931</b>	<b>1,056,059</b>	<b>4,654,141</b>	<b>1,674,918</b>

#### Broadband Adoption Statistics by Economic Development Region

Economic Development Region	Total households	Smartphone dependent households	Cellular data dependent households	Households without a computing device	Households without an internet subscription
Northeast	3,376,823	270,387	349,868	158,143	306,034
Central	219,772	29,213	38,672	16,484	30,284
Southwest	271,806	28,150	33,269	18,202	30,206
North Central	262,787	28,132	33,435	15,803	32,079
Southern	149,293	24,923	33,151	15,770	26,692
Northwest	202,902	23,180	27,641	15,627	26,594
Northern Statewide	174,768	19,040	21,843	12,503	21,811
East Central	145,695	15,530	21,853	8,933	18,559
Southeast	110,296	14,730	17,826	8,738	14,836
West Central	87,762	10,871	11,921	9,264	15,065
<b>Total</b>	<b>5,001,904</b>	<b>463,976</b>	<b>589,539</b>	<b>279,507</b>	<b>522,140</b>

Note: This dashboard works best in the Google Chrome browser

# FCC National Broadband Map

View available providers at individual locations as well as their maximum advertised speeds.

**Access the Map** <https://broadbandmap.fcc.gov/home>

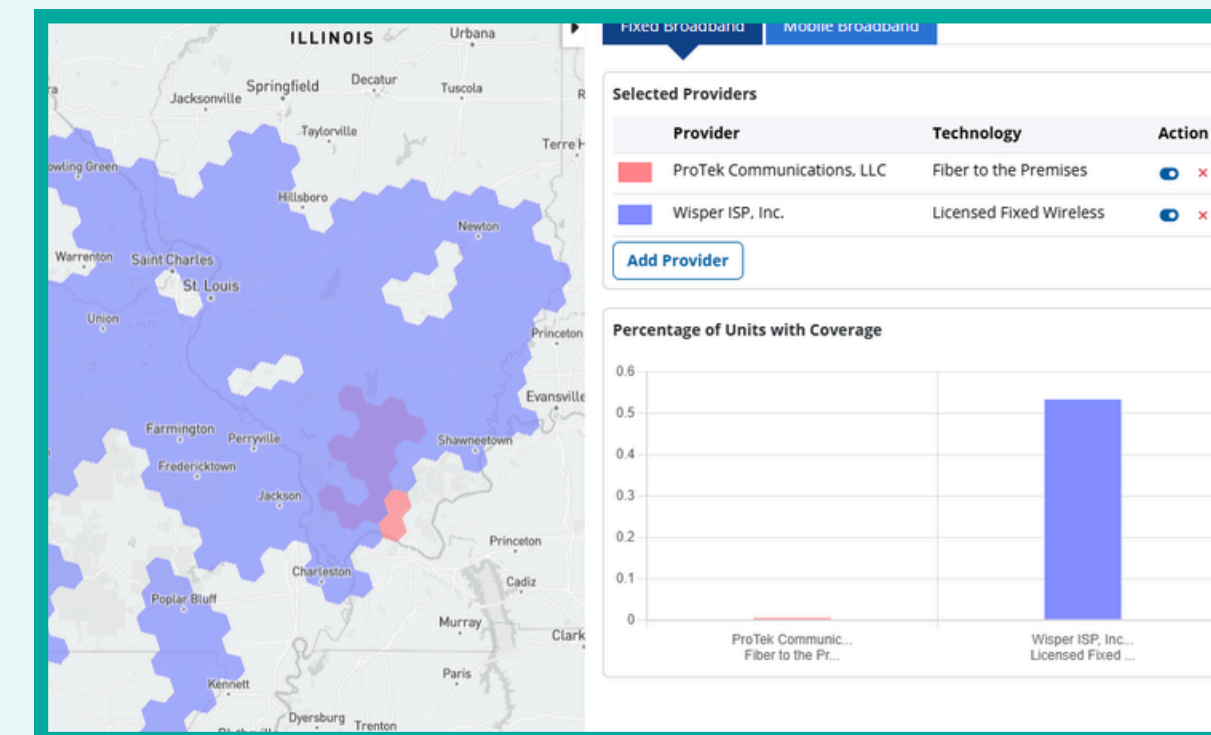
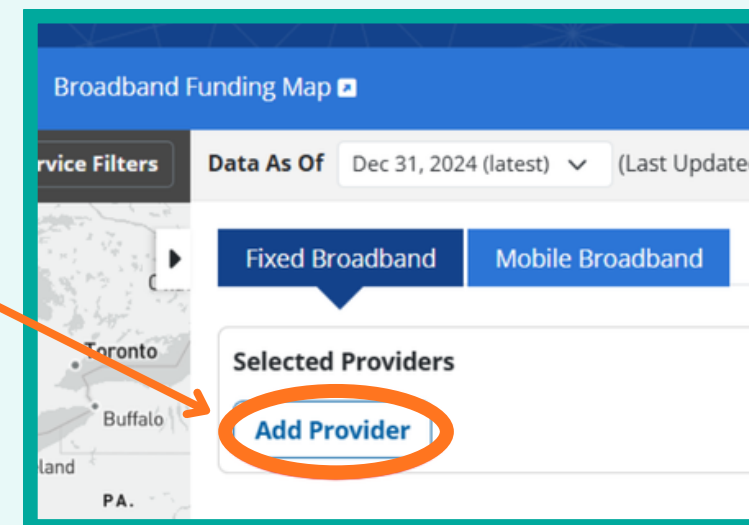
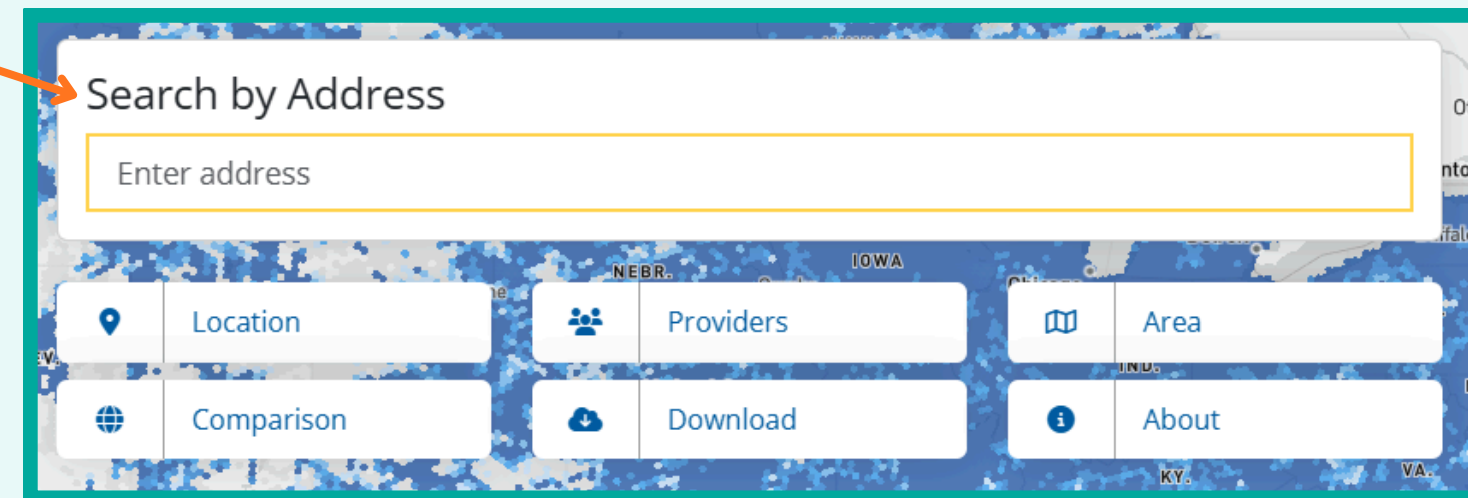
## Search by Address

- Enter an address in the search bar to zoom in to that exact location
- The broadband availability information on the right will break down every available fixed and mobile broadband connection and their maximum advertised speeds for that location.
- The map legend below the availability information will indicate the corresponding colors for the locations on the map

## Search by Provider

- Click the providers button or provider detail option to open the provider map
- Use the Add Provider button to search a list of verified providers, and select an available technology.
- The served area with that technology will display in red hexagons.
- You can continue to add providers to display on the same map in a different overlapping color

The National Broadband Map displays where internet services are available across the United States, as reported by Internet Service Providers (ISPs) in the FCC's ongoing [Broadband Data Collection](#). The map allows consumers and other stakeholders to easily dispute, or challenge, information shown on the map that they believe is inaccurate.



If you have additional questions about the FCC National Broadband Map, use the About button at the top of the page to access the BDC Online Help Center.

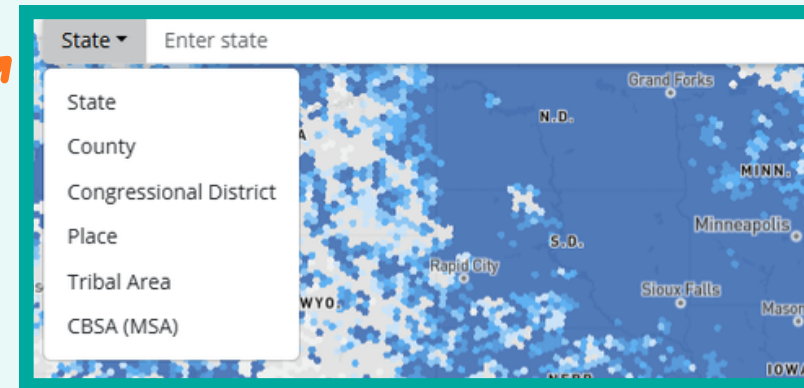
# FCC National Broadband Map

View available providers at individual locations as well as their maximum advertised speeds.

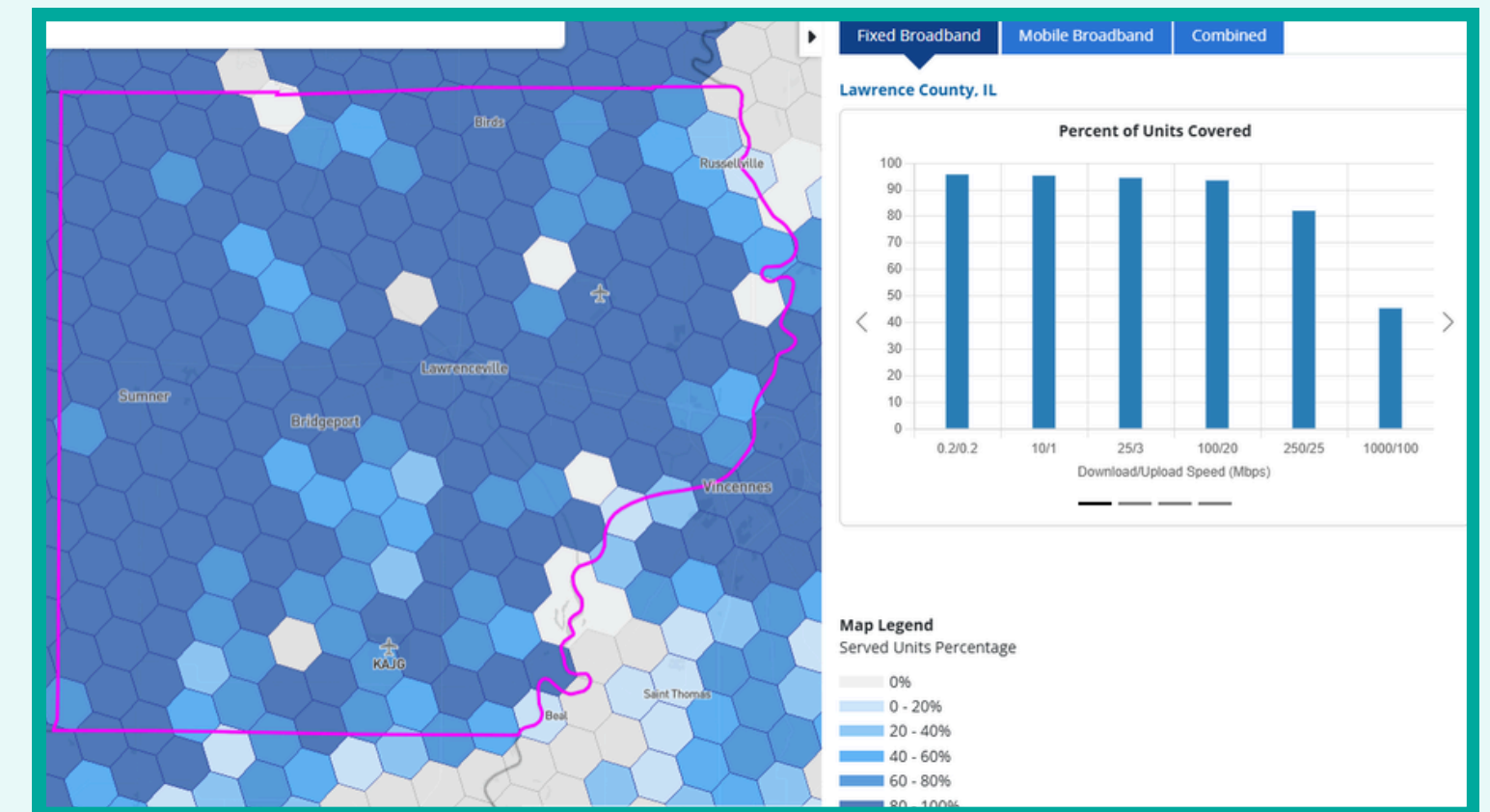
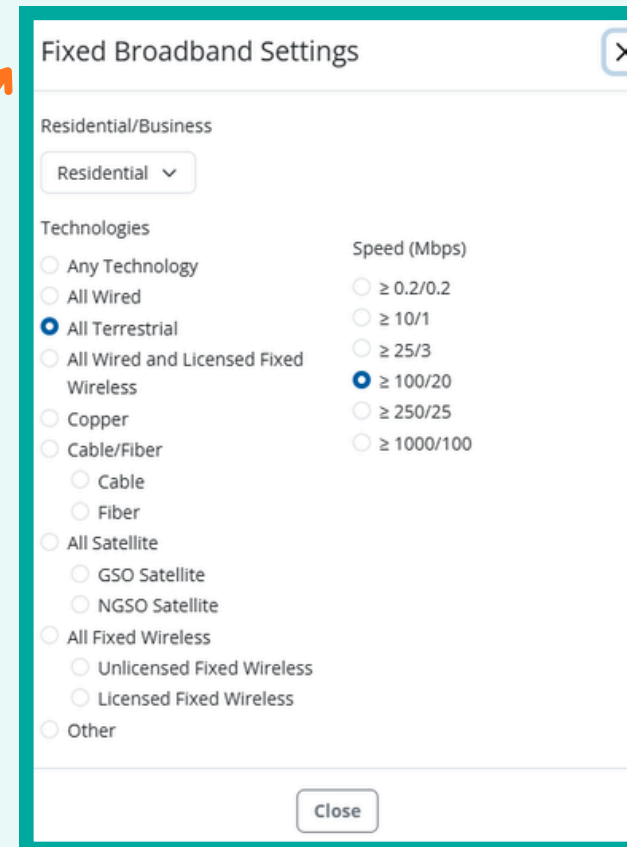
**Access the Map** <https://broadbandmap.fcc.gov/home>

## Area Summary

- Click the Area button or Area Summary option to open the area view of the map
- Use the dropdown arrow on the search bar to select what category of area you would like to search for
- As you type, the bar will display suggested areas. Selecting from that drop down will direct the map to zoom in to that area
- The map will display the area in blue and grey hexagons to represent the percentage of locations in that hexagon served by terrestrial broadband at speeds of 100/20 mbps or more
  - Use the Service Filters in the top right of the map window to adjust the type of location, technology, and speeds displayed on the map
- Use the legend to see the corresponding colors. If a hexagon is not included on the map, there is no available information, or there are no BSLs in that location.



- NOTE: The hexagons displayed do not necessarily represent blanket coverage or density of BSLs. Some 100% served hexagons may only represent three or four locations, where other heavily populated hexagons may have lower percentages, but serve many more locations.



If you have additional questions about the FCC National Broadband Map, use the About button at the top of the page to access the BDC Online Help Center.

# FCC National Broadband Map

View available providers at individual locations as well as their maximum advertised speeds.

Access the Map <https://broadbandmap.fcc.gov/home>

## Area Comparison

- Click the Comparison button or Area Comparison option to open the comparison view of the map
- Select your geography type and data type, and then mouse over the selected areas to see the data you have selected.
- Use the Service Filters in the top right of the map window to adjust the type of location, technology, and speeds displayed on the map

## Data Download

- Click the Download button or Data Download option to open download menu
- Select a state from the drop down menu at the right to view what kinds of data are available for download
- Select and download the selected data

The screenshot displays the FCC National Broadband Map interface. The top section shows a map of Illinois with a popup for Tazewell County, displaying 82.37% coverage, 65,735 total units, and 15,516 total rural units. The right sidebar contains filters for 'Select Geography' (County), 'Data Type' (Rural), and 'Broadband Filter Details' (Service: Residential, Technology: All Terrestrial, Speed: ≥ 100/20). Below the filters is a 'Top 10 Geographies' table with 10 entries, all showing 100.00% coverage.

The bottom section shows the 'Data Download' sidebar with tabs for 'By State', 'By Provider', and 'Challenges'. The 'By State' tab is active, showing a dropdown for 'State' set to 'Illinois'. Below this are three columns of data download options: 'Fixed Broadband Availability Data' (Cable, Copper, Fiber to the Premises, GSO Satellite, LBR Fixed Wireless, Licensed Fixed Wireless), 'Mobile Availability Data by Technology' (4G LTE, 5G-NR, Mobile Voice), and a 'Summary' section with various download options like 'Provider List', 'Provider Summary by Geography Type', and 'Fixed Broadband Summary by Geography Type'.

If you have additional questions about the FCC National Broadband Map, use the About button at the top of the page to access the BDC Online Help Center.

**Access the Map** <https://broadbandmap.fcc.gov/home>

## Challenge a Location

- When selecting a location or an address, there will be a blue Location Challenge text button on the top right of the broadband availability panel
- If you wish to certify that there is a problem with this location, you are able to do so through this tool
- You must provide your name, email, and phone number to challenge a location, and verify your email address to proceed.
- You can only challenge a location for these reasons, and you must provide certification like documents, screenshots, etc. in order to submit the challenge.

## Challenge a Location's Availability

- When selecting a location or an address, there will be a blue Availability Challenge text button on the top right of the broadband availability panel
- You must have a verified account through the map to proceed, and you must provide your personal information and documentation to challenge availability at that location.

### Location Challenge

Building Type	Unit Count
Residential	1

✓ 1 Contact   2 Challenge Type   3 Certification

*All fields required unless otherwise indicated.*

Category

- The address for this location is incorrect.
- The unit count for this location is incorrect.
- I want to move the point from one building to another on the same property (e.g. from a barn/garage to a home/business).
- This location does not or would not have a broadband connection.
- Add additional address for this location.
- This location does or would have a broadband connection, but the Building Type is incorrect.

Previous Next

If you have additional questions about the FCC National Broadband Map, use the About button at the top of the page to access the BDC Online Help Center.

# FCC Broadband Funding Map

View federal funding sources at individual locations, such as Federal Communications Commission (FCC), National Telecommunications and Information Administration (NTIA), Rural Utility Service (RUS), and Department of Treasury grants.

**Access the Map** <https://fundingmap.fcc.gov/home>

## Explore by Funding Program

- Upon opening the map, the search panel will display all of the funding programs available
- Select the program you would like to see on the map. You will see blue hexagons where locations are eligible for that funding
- Click on individual hexagons to display program and provider information and buildout percentages
- You can click on the program name in the right information panel to display project information, including program and eligibility descriptions, funding amounts, and more.

## Apply Additional Filters and Search

- Use the Funding Filters button in the top right corner to apply additional filters like broadband speeds or dates of programming
  - Also use this button to change the displayed program
- Use the search bar to highlight different boundaries like state, congressional district, and more

Search by Address About

Enter address

**Broadband Funding Summaries**

<b>Appalachian Regional Commission</b> Area Development Partnerships for Opportunity and Workforce and Economic Revitalization	<b>Federal Communications Commission</b> Connect America Fund Phase II Enhanced Alternative Connect America Cost Model Rural Digital Opportunity Fund	<b>NTIA</b> Broadband Infrastructure Program Tribal Broadband Connectivity Program NOFO 1 Tribal Broadband Connectivity Program NOFO 2	<b>Rural Utilities Service</b> COMMUNITY CONNECT GRANT PROGRAM RURAL ECONNECTIVITY PROGRAM TELEPHONE LOAN PROGRAM	<b>US Department of Treasury</b> Capital Projects Fund State and Local Fiscal Recovery Fund
--	--	---	--	---

Location Funding Area Download

Program Details - Rural Digital Opportunity Fund

Program Information Projects: 447

**Agency** Federal Communications Commission

**Program Name** Rural Digital Opportunity Fund (RDOF)

**Program Description** The Rural Digital Opportunity Fund was a reverse auction that provided support to connect rural homes and small businesses to high-speed broadband networks. RDOF prioritized higher network speeds and lower latency, so that those benefitting from these networks will be able to use tomorrow's internet. [Show More](#)

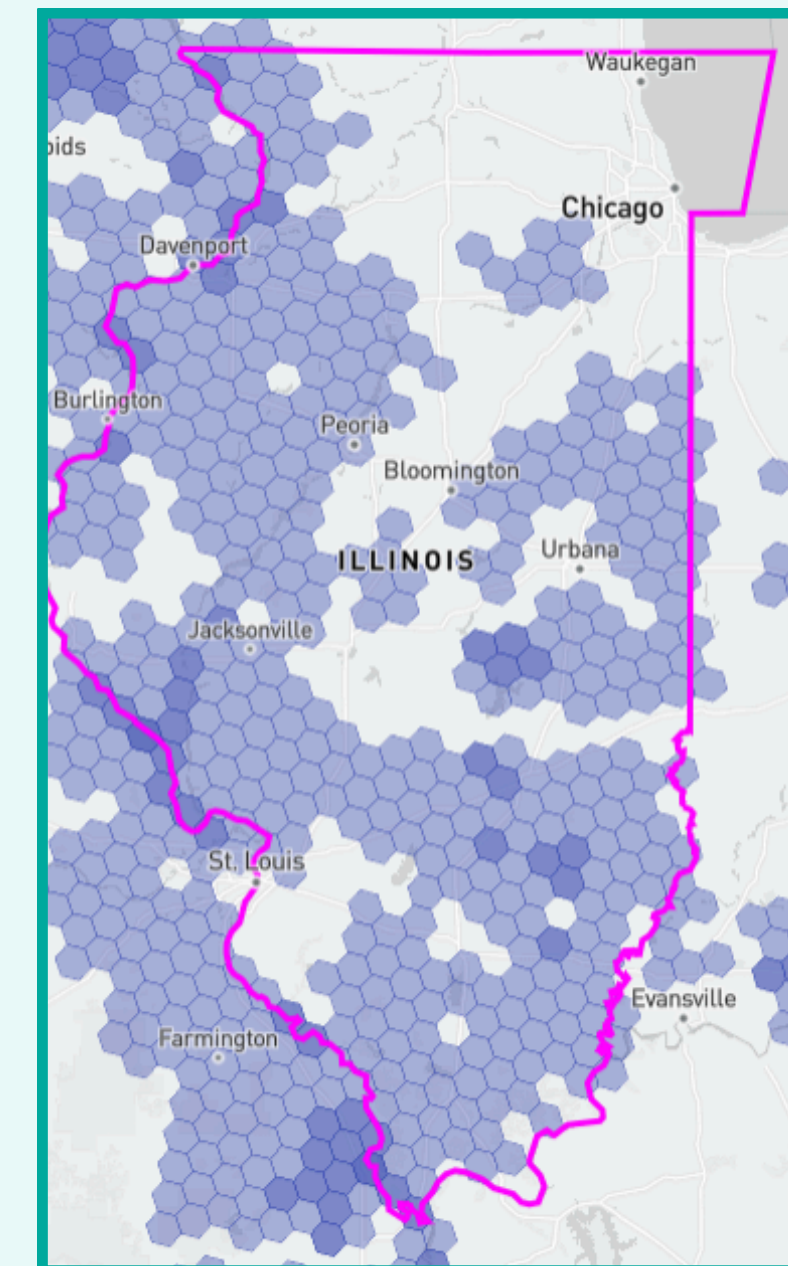
**Eligibility Description** Census blocks that meet the following: (1) the census blocks for which price cap carriers currently receive CAF Phase II model-based support; (2) any census blocks that were eligible for, but did not receive, winning bids in the CAF Phase II auction; (3) any census blocks where a CAF Phase II auction... [Show More](#)

**Program Last Updated** Dec 10, 2025

**Funding Data**

<b>Funding Source</b>	Federal Communications Commission	<b>Funding Type</b>	Other
<b>Funding Obligated</b>	\$6,060,501,613	<b>Funding Disbursed</b>	\$2,004,244,471
<b>Funding Defaulted</b>	\$268,687,944		

Close



If you have additional questions about the FCC Broadband Funding Map, use the About button at the top of the page to access the BDC Online Help Center.

# USDA Public Searchable Map Database

View project areas for various USDA loan and grant programs, such as the Rural Opportunity Development Fund (RDOF)

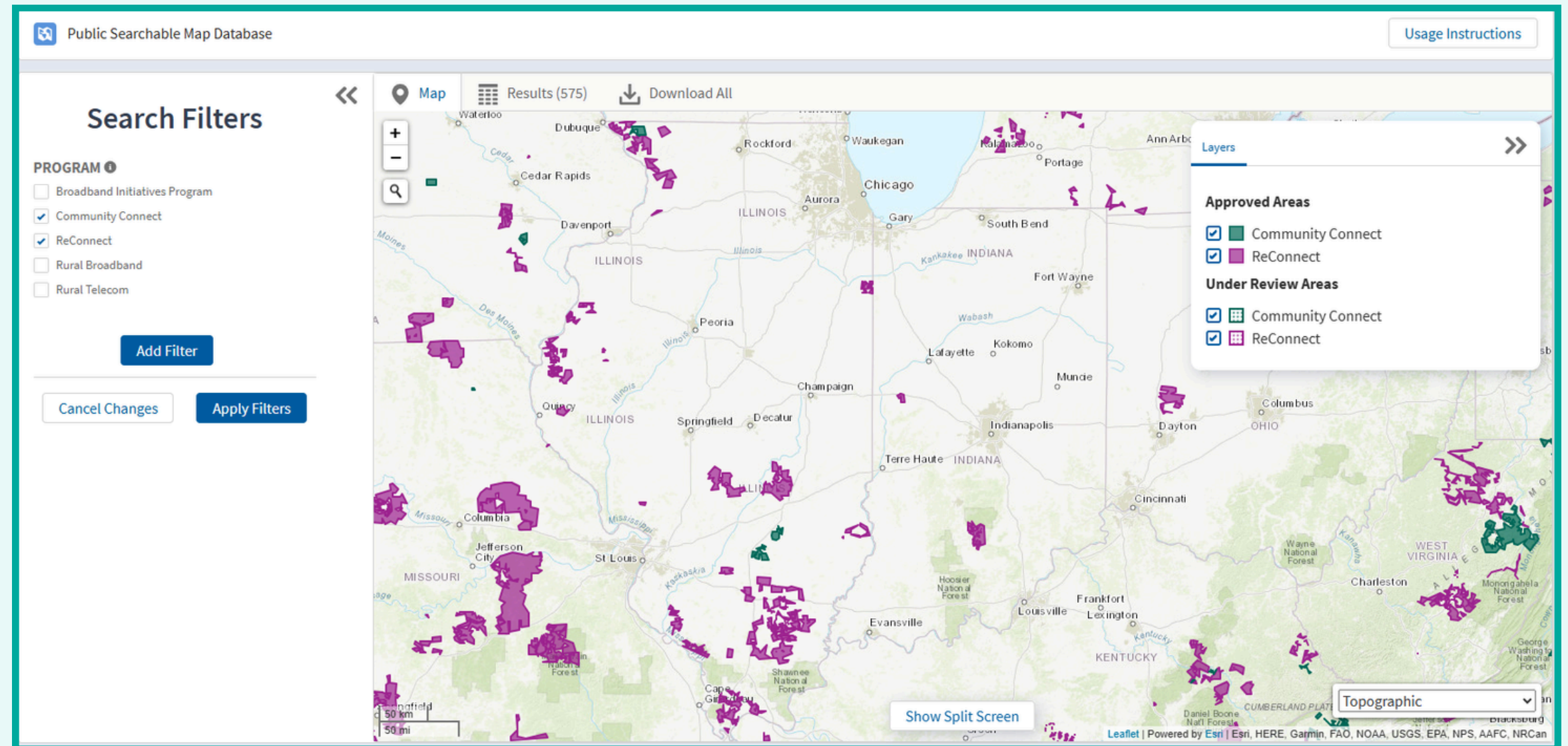
**Access the Map** <https://www.rus-services.rd.usda.gov/public-searchable-database>

## Welcome and Instructions

- When opening the map, a pop up message will appear, explaining what the map can be used for
- Click the Instructions tab to see a detailed breakdown of available programs, layers, and filters
- You can dismiss the pop up by clicking the close button.
- You can access the usage instructions again with the button in the top right corner of the map

## View Broadband Program Areas

- Select the broadband programs you wish to view and click the **Apply Filters** button to view those program areas.
- Select highlighted areas to see the program descriptions, providers, and more.
- You can use the magnifying glass icon to search for an address, county, city, or more.
- You can add additional filters, but it may interfere with the map view.



If you have additional questions about the USDA Public Searchable Map Database, use the Usage Instructions button at the top right of the page to see detailed instructions.

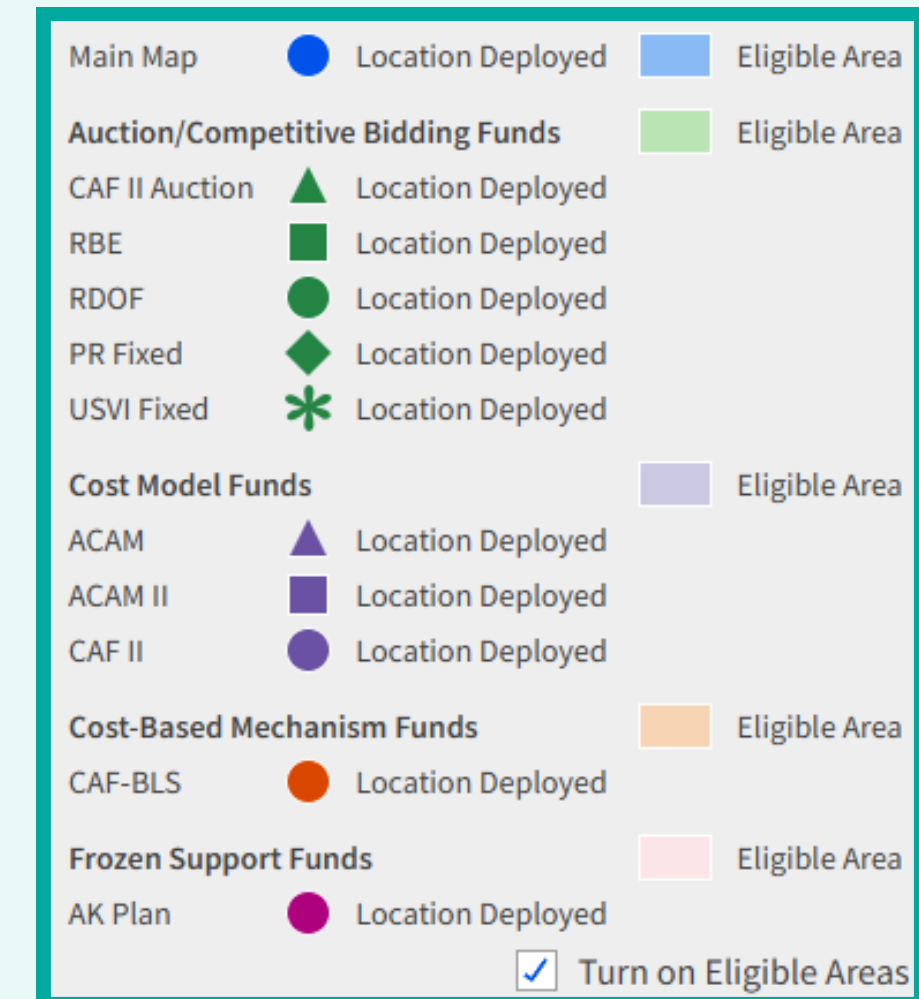
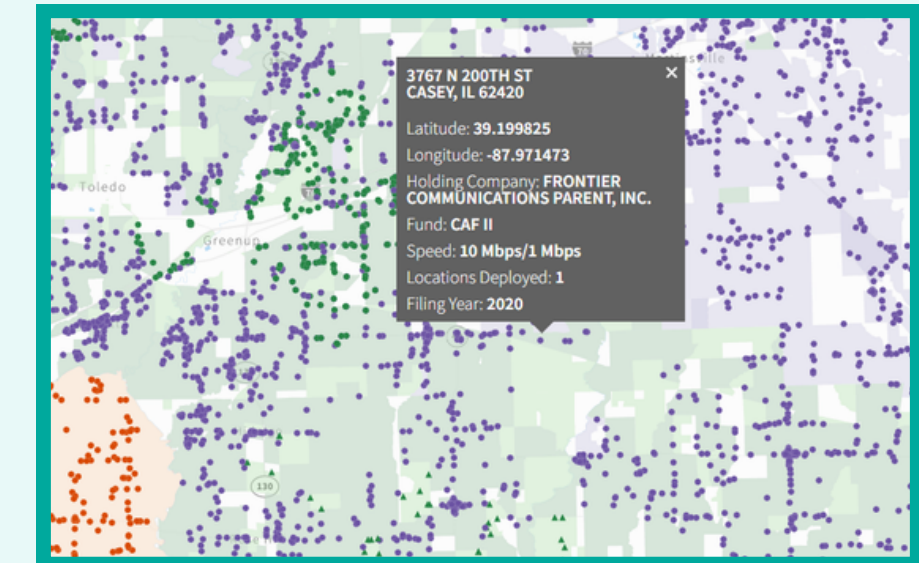
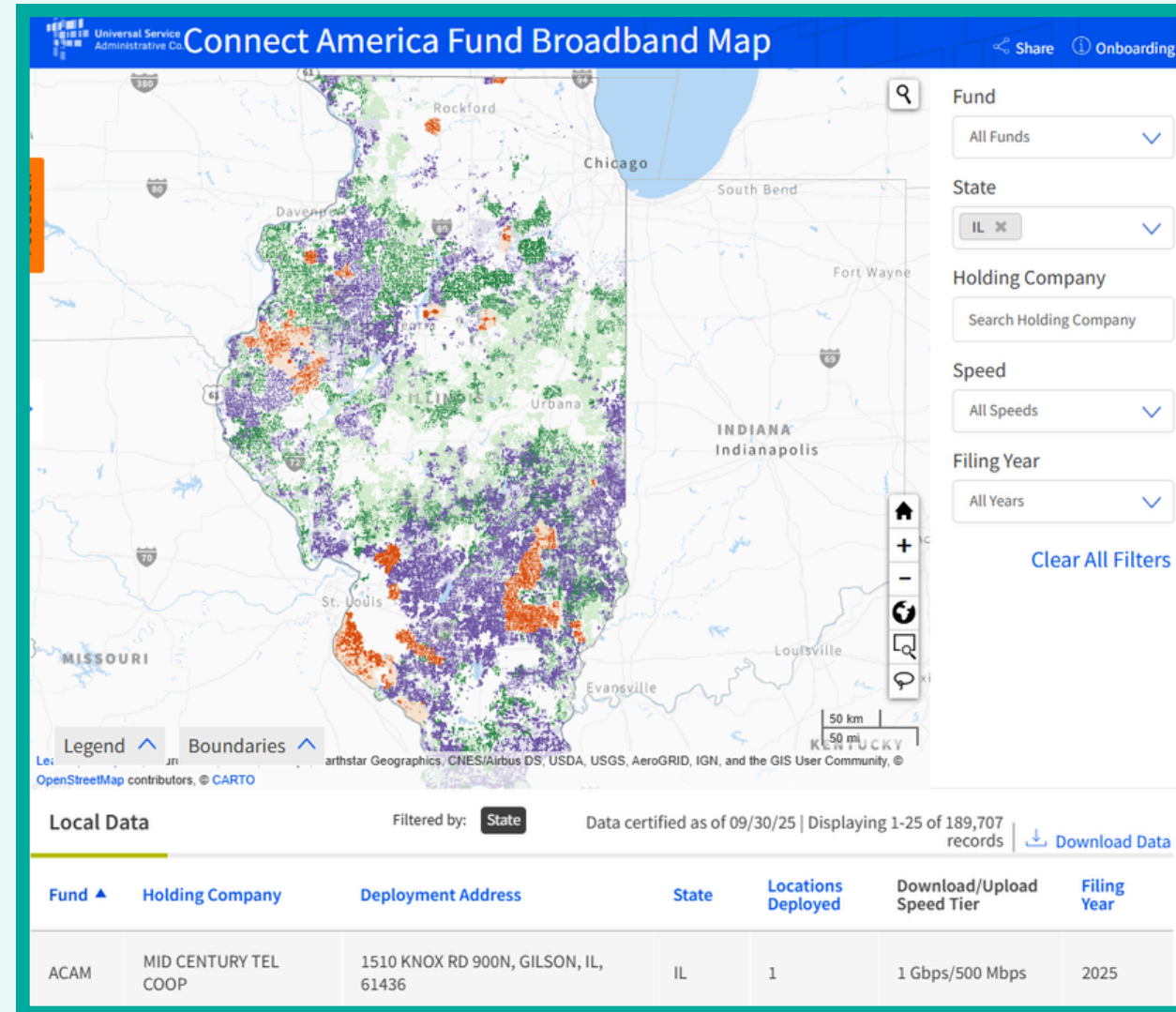
# Connect America Fund Broadband Map

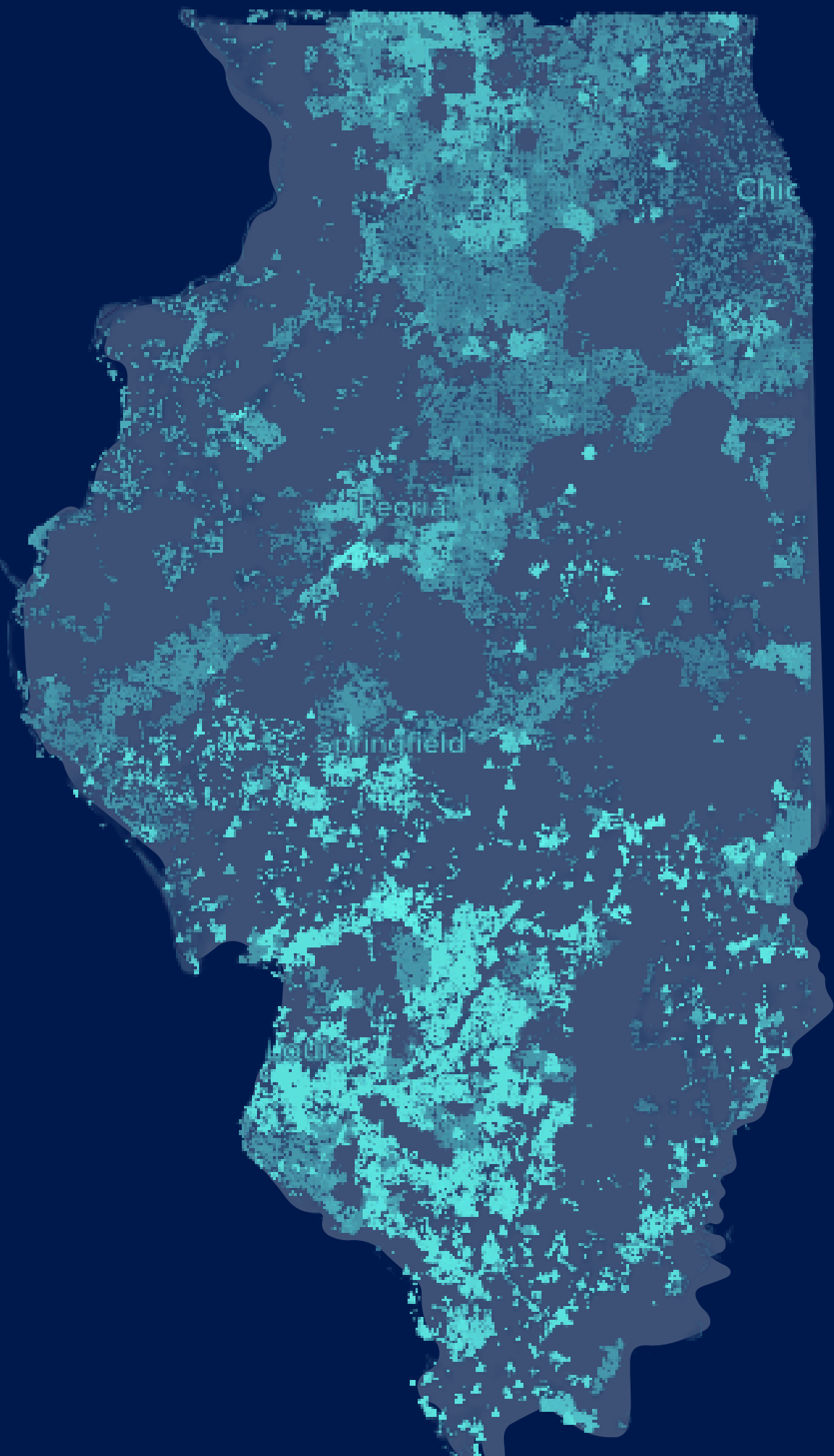
See progress reports for programs such as Connect America Fund (CAF), Rural Broadband Experiments (RBE), Rural Digital Opportunity Fund (RDOF), and Alternative Connect America Cost Model (ACAM).

**Access the Map** <https://data.usac.org/publicreports/caf-map/>

## Viewing Program Areas

- When opening the map, it will display all programs on a national level. To narrow your view to a state or group of states, use the State drop down menu to select the ones you would like to view
- You can further narrow the program view by fund, holding company, speed, or filing year.
- Click on individual locations to see more information about that location, such as address, holding company, fund, speed, and filing year.
- Use the legend to identify funding programs and eligible areas.
- Use the boundaries menu to add or remove district or county boundaries to the map view
- Use the Local Data listings below the map to view displayed project information
- Use the blue arrow at the left side of the screen to learn more about the CAF Map as well as all of the other funds and their data





# Broadband Maps Guide

Thank you for using the Broadband Maps Guide!

*For any mapping, data, or location questions, please contact the Illinois Office of Broadband at [broadband@illinois.gov](mailto:broadband@illinois.gov)*



**Illinois**  
**Department of Commerce**  
& Economic Opportunity  
OFFICE OF BROADBAND



ILLINOIS  
BROADBAND  
LAB