



Illinois
Department of Commerce
& Economic Opportunity
JB Pritzker, Governor

IL ARPA: NEU Webinar

August 2024

*Thank you for joining,
we'll begin our session soon!*



- Our team worked in July to reach out to NEUs that did not submit the April 2024 report.
 - *Please reach out to our team (ILARPA@crowe.com) if you need assistance reporting.*
- ****If your agency spent 100% funds as of March 31, 2024, you would need to file a closeout report.**
 - Treasury will provide further closeout instructions that will provide information to recipients on how to complete closeout and provide final report information.





1. **How can I make updates to user roles if the current point of contact has left due to staff turnover?**
 - a) If you need the account identifier, you will need send an email to the COVID Relief IT Team at COVIDReliefITSupport@treasury.gov.
2. **How do I edit or delete a report?**
 - a) Reopening submitted reports: Reports from prior periods are not eligible to be re-opened for revisions after the reporting deadline has passed.
 - b) You can edit the project in the next Annual Report by ;
 1. change the project status to cancel;
 2. create a new project; or
 3. create negative subaward or expenditure line items to reconcile incorrect line items.





- **All NEUs regardless if you have expended all the funds will need to report in April 2025.**
- **Confirming Contact Information and Treasury Portal Access**
 - If you have administrative changes or know you will have changes, please contact US Treasury technical assistance sooner than April 2025 (COVIDReliefITSupport@treasury.gov).





- Standard Allowance allows you to claim your entire allotment under revenue loss without calculating the actual lost revenue.
- Recipients can use their funds on government services that generally include **any service traditionally provided by a government**, unless Treasury has stated otherwise.
- Common Examples:
 - ✓ Construction of schools and hospitals
 - ✓ Road building and maintenance, and other infrastructure
 - ✓ Health services
 - ✓ General government administration, staff, and administrative facilities
 - ✓ Environmental remediation
 - ✓ Provision of police, fire, and other public safety services (including purchase of fire trucks and police vehicles)





Bookmark:

Online Access

All reports must be submitted through the State, Local, and Tribal Support portal via the following link:

- If using Login.gov- <https://portal.treasury.gov/compliance/s/>
- If using ID.me- <https://portal.treasury.gov/cares/s/slt>

Self-help resources and frequently asked questions (FAQs) available on the [Treasury SLFRF Website](#) and the [Reporting Responsibilities](#)

US Treasury Technical Assistance Contact: **COVIDReliefITSupport@treasury.gov**



Reminder!

Bookmark:

<https://dceo.illinois.gov/curneu.html>

For direct assistance, you can reach our team at ILARPA@crowe.com or CEO.CURE@illinois.gov



Illinois
Department of Commerce
& Economic Opportunity

JB Pritzker, Governor

Illinois Non-Entitlement Units (NEU)

[The NEU Portal](#)

[Minor Civil Division Determination](#)

[Process to Request Funds](#)

[Eligible Uses of Funds](#)

[US Treasury Resources](#)

[Technical Assistance](#)

[NEU Participant Timeline](#)

[Illinois NEU Allocation Amounts & Status](#)

[1st Tranche Payment Data](#)

Illinois NEU Allocations from ARPA

American Rescue Plan Funds (ARPA) for Non-entitlement Units (NEU) of Local Government (Portal now open)

The American Rescue Plan Act of 2021 (ARPA) appropriates \$19.53 billion to States for distribution to tens of thousands of non-entitlement units of local government (NEUs). ARPA directs the U.S. Department of the Treasury (Treasury) to make payments to each State for distribution to NEUs within the State. Illinois' NEU allocation is \$742 million. In Illinois, eligible NEUs include more than 1,250 cities, towns and villages that each serve a population under 50,000.

These funds provide a critical source of relief for local governments, including smaller governments which have not received direct financial assistance from the federal government since the onset of the COVID-19 pandemic.

Authorized representatives from each NEU can log into the portal, request their allotment and download all the required Treasury documentation. Allocations to communities are made on a per-capita basis in two payments. After completing the allocation request on the portal local governments will receive their allocation in two payments: the first will be made within 30 days of portal completion, the second to be made approximately one year later.

Funds can be used to cover revenue losses and the costs of responding to the COVID-19 public health emergency or to its negative economic impacts on households, small businesses, impacted industries, essential workers, and the communities hardest-hit by the crisis. These funds can also be used to invest in building, maintaining, or upgrading water, sewer, and broadband infrastructure.

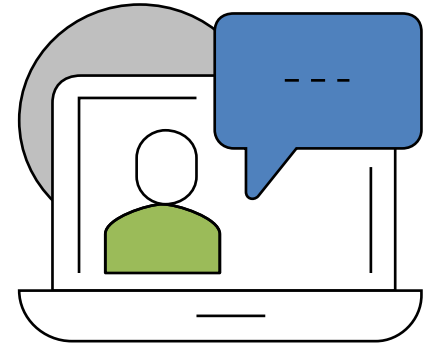
Note: Per Treasury guidance, NEUs that did not claim their allotments within 60 days after the State began accepting and processing requests for funding, forfeited their allotment. As of November 19, 2021, the State distributed any remaining funds to NEUs who elected to receive funds. No further re-allocation of funds will be made during the program timeline.



We want to hear from you! Questions?

Use the 'raise hand' feature, facilitator will ask you to un-mute.





For additional questions:
please email us at ILARPA@crowe.com



Illinois
Department of Commerce
& Economic Opportunity

JB Pritzker, Governor

ILLINOIS 