

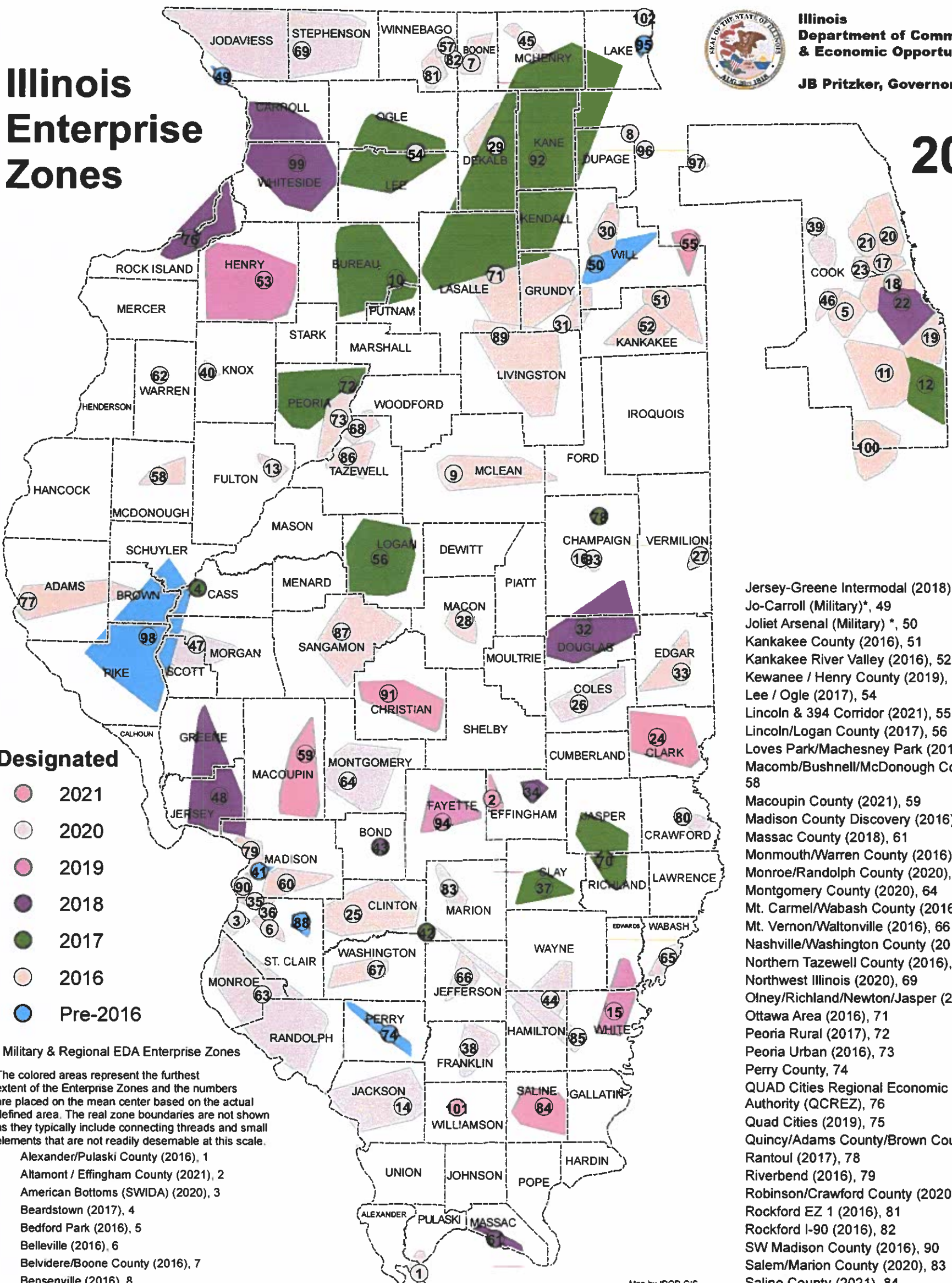
Illinois Enterprise Zones



Illinois
Department of Commerce
& Economic Opportunity

JB Pritzker, Governor

2022



Designated

- 2021
- 2020
- 2019
- 2018
- 2017
- 2016
- Pre-2016

* Military & Regional EDA Enterprise Zones

The colored areas represent the furthest extent of the Enterprise Zones and the numbers are placed on the mean center based on the actual defined area. The real zone boundaries are not shown as they typically include connecting threads and small elements that are not readily discernable at this scale.

- Alexander/Pulaski County (2016), 1
- Altamont / Effingham County (2021), 2
- American Bottoms (SWIDA) (2020), 3
- Beardstown (2017), 4
- Bedford Park (2016), 5
- Belleville (2016), 6
- Belvidere/Boone County (2016), 7
- Bensenville (2016), 8
- Bloomington-Normal (2016), 9
- Bureau Putnam Area (2017), 10
- Cal Sag (2016), 11
- Calumet Region (2017), 12
- Canton/Fulton County (2016), 13
- Carbondale/Murphysboro/Jackson County (2020), 14
- Carmi/White County/Edwards County (2019), 15
- Champaign/Champaign County (2016), 16
- Chicago I (2016), 17
- Chicago II (2016), 18
- Chicago III (2016), 19
- Chicago IV (2016), 20
- Chicago V (2016), 21
- Chicago VI (Enterprise Zone 6) (2018), 22
- Cicero (2016), 23
- Clark County (2021), 24
- Clinton County (2016), 25
- Coles County (2020), 26
- Danville/Vermilion County (2016), 27
- Decatur / Macon County (2016), 28

- Dekalb County (2016), 29
- Des Plaines River Valley (2016), 30
- Diamond (2016), 31
- Douglas County (2018), 32
- Edgar County / Paris (2016), 33
- Effingham/Effingham County (2018), 34
- Fairmont City/Caseyville/Brooklyn/ St. Clair County (2016), 35
- Fairview Heights (2016), 36
- Flora / Clay County (2017), 37
- Franklin County I-57 (2020), 38
- Franklin Park (2016), 39
- Galesburg (2016), 40
- Gateway Commerce Center (SWIDA) *, 41
- Greater Centralia (2017), 42
- Greenville/Bond County (2017), 43
- Hamilton/Wayne County (2020), 44
- Harvard/Woodstock (2016), 45
- Hodgkins/McCook (2016), 46
- Jacksonville Regional (2020), 47

Map by IDOR GIS
09/26/2021

- Jersey-Greene Intermodal (2018), 48
- Jo-Carroll (Military)*, 49
- Joliet Arsenal (Military) *, 50
- Kankakee County (2016), 51
- Kankakee River Valley (2016), 52
- Kewanee / Henry County (2019), 53
- Lee / Ogle (2017), 54
- Lincoln & 394 Corridor (2021), 55
- Lincoln/Logan County (2017), 56
- Loves Park/Machesney Park (2016), 57
- Macomb/Bushnell/McDonough County (2016), 58
- Macoupin County (2021), 59
- Madison County Discovery (2016), 60
- Massac County (2018), 61
- Monmouth/Warren County (2016), 62
- Monroe/Randolph County (2020), 63
- Montgomery County (2020), 64
- Mt. Carmel/Wabash County (2016), 65
- Mt. Vernon/Waltonville (2016), 66
- Nashville/Washington County (2016), 67
- Northern Tazewell County (2016), 68
- Northwest Illinois (2020), 69
- Oney/Richland/Newton/Jasper (2017), 70
- Ottawa Area (2016), 71
- Peoria Rural (2017), 72
- Peoria Urban (2016), 73
- Perry County, 74
- QUAD Cities Regional Economic Development Authority (QCREZ), 76
- Quad Cities (2019), 75
- Quincy/Adams County/Brown County (2016), 77
- Rantoul (2017), 78
- Riverbend (2016), 79
- Robinson/Crawford County (2020), 80
- Rockford EZ 1 (2016), 81
- Rockford I-90 (2016), 82
- SW Madison County (2016), 90
- Salem/Marion County (2020), 83
- Saline County (2021), 84
- Southeastern Illinois Economic Development Authority (SIEDA), 85
- Southern Tazewell County (2016), 86
- Springfield/Sangamon County (2016), 87
- St. Clair County MidAmerica (SWIDA)*, 88
- Streator Area (2016), 89
- Taylorville / Christian County (2021), 91
- Upper Illinois River Valley Development Authority (UIRVDA), 92
- Urbana/Champaign County (2016), 93
- Vandalia/Fayette County, 94
- Waukegan-North Chicago, 95
- West Regional (2020), 96
- Western Hoffman Estates (2020), 97
- Western Illinois Economic Development Authority (WIEDA), 98
- Whiteside Carroll (2018), 99
- Will County/Cook County (2016), 100
- Williamson County (2021), 101
- Zion Benton (2020), 102